



EN

## CERAMIC TOWER FAN HEATER for BATHROOM USE – IP21

# MOOD



## OPERATING INSTRUCTIONS

Read the instructions carefully before operating the appliance or carrying out maintenance operations.

Observe all the safety instructions; failure to observe the instructions may lead to accidents and/or damage. Store these instructions in a safe place for future reference.

## GENERAL SAFETY INFORMATION

- Use this fan heater only as outlined in this manual. Any other use not recommended by the manufacturer may cause fire, electric shock or injury to persons.
- Make sure that the type of mains power complies with the electrical requirements of the fan heater (220-240V~ /50Hz).
- This appliance can be used by children aged from 8 years and above and people with reduced physical, sensory or mental capabilities or lack of experience and knowledge if they have been given supervision or instruction concerning use of the appliance in a safe way and understand the hazards involved.
- Children shall not play with the appliance.
- Cleaning and user maintenance shall not be made by children without supervision.
- This product is not a toy. Children under the age of 3 years must be kept away unless properly supervised to ensure they do not play with the appliance.
- Children aged between 3 and 8 years must only be able to turn the appliance on/off, provided that the appliance has been placed in its normal operating position, that instructions have been given on how to use the equipment safely, and that its risks have been understood.
- Children aged between 3 and 8 years must not be able to plug in, adjust, clean or do any maintenance on the appliance.
- **WARNING:** Some parts of this product may become very hot and cause burns. Special care should be taken around children and vulnerable people.
- To avoid the risk of accidentally resetting the thermal protection, this appliance must not be powered through an external switching device, such as a timer, or connected to a circuit that is switched on and off by the utilities.
- **WARNING: Do not use the fan heater with a controller or any other device that activates the appliance automatically, as there may be a risk of fire if the fan heater is covered or incorrectly positioned.**
- Do not restrict the air inlet and outlet grilles.
- The appliance heats up significantly when in use and can cause burns. Avoid unprotected contact with the hot surface.

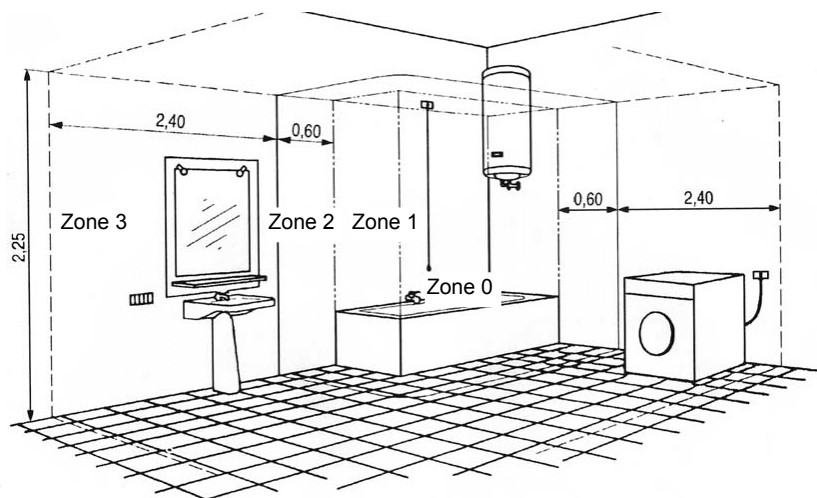
- Keep flammable materials, such as furniture, cushions, blankets, paper, cloths, curtains and suchlike at least 1 m away from the front, sides and back.
- Disconnect the mains power when the appliance is not in use or during cleaning.
- Avoid using the fan heater in dusty environments or in the presence of flammable vapours (e.g. in workshops or garages).
- Do not place anything on the product; avoid placing wet garments on the fan heater.
- Use the heater in a well-ventilated area.
- Avoid placing fingers or foreign objects in the air inlet/outlet grilles, as this may lead to electric shock or fire and may damage the appliance.
- To avoid the risk of fire, do not block the grilles or tamper with them in any way while the fan heater is in use.
- **Do not use the appliance if the power cord or plug are damaged.** Contact a service centre to replace a damaged power cord, so as to avoid any safety risks.
- Do not use the appliance if it has fallen from a certain height or if it has been damaged in any way. Contact a service centre to check the fan heater or make any electrical or mechanical repairs.
- The most common cause of overheating is the build-up of dust in the appliance. Remove the accumulated dust by removing the plug and cleaning the grilles using a vacuum cleaner.
- Do not use any abrasive products to clean the appliance. Clean it using a damp cloth (not wet) rinsed with soapy water. Remove the plug from the socket before doing any maintenance.
- To disconnect the fan heater, turn the switch to OFF and remove the plug from the socket. Pull the plug only. Do not pull the cord to turn off the heater.
- Do not place any objects on the cable and do not bend it.
- It is not advisable to use extension cords, as these may overheat and cause the risk of fire. Never use a single extension cord to operate multiple appliances.
- Do not immerse the power cord, plug or any other part of the appliance in water or other liquids.
- Do not touch the plug with wet hands.
- Do not place the fan heater above or near another heat source.

## **WARNING: AVOID COVERING THE FAN HEATER TO PREVENT IT FROM OVERHEATING.**

The symbol below signals the above warning:



- The fan heater may cause the risk of fire if, while in operation, is covered by or comes into contact with **flammable** material including curtains, drapery, blankets, etc. **KEEP THE FAN HEATER AWAY FROM THESE MATERIALS.**
- Do not connect the fan heater to the power supply until it has been correctly assembled or positioned.
- Do not run the cord under carpets. Do not cover the cord with blankets, carpets or similar materials. Place the cord far away from busy areas, or in a place where it cannot be accidentally pulled-out.
- Do not operate the fan heater in close proximity to bathtubs, showers, washbasins or pools.
- The appliance is equipped with IP21 protection for use in private bathrooms in Zone 3.



- Do not position the fan heater below a socket outlet.
- Do not operate the appliance outdoors.
- Upon initial start-up, the fan heater may emit a slight, harmless smell. This smell is a normal effect of the initial heating up of the internal heating elements, and should not recur later on.

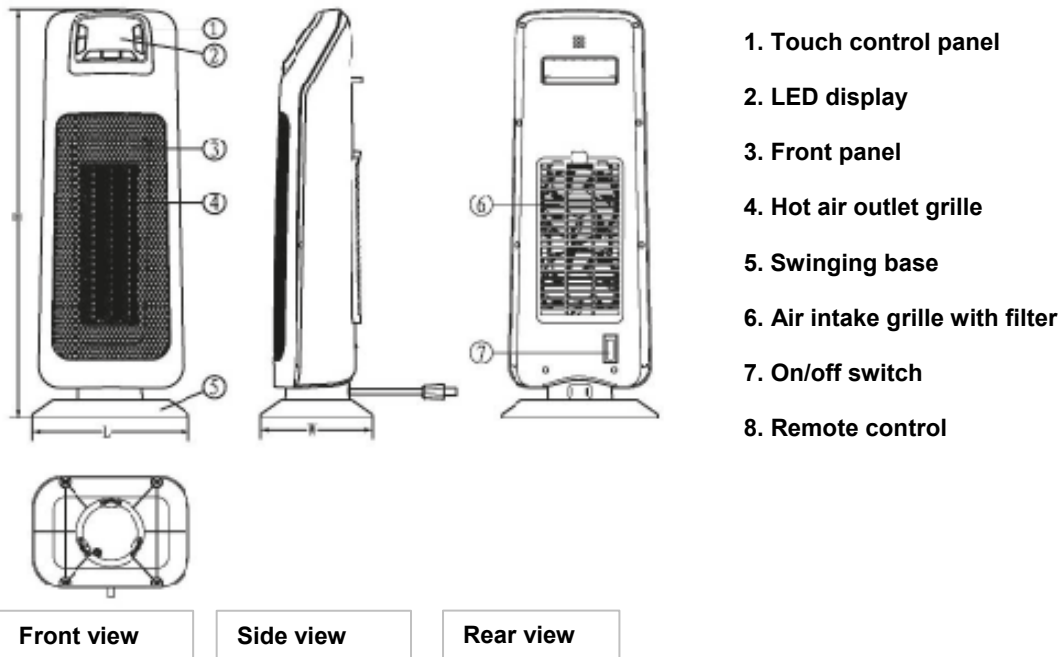
## **WARNING:**

**THE ON/OFF SWITCH IS NOT THE ONLY METHOD OF DISCONNECTING THE MAINS POWER.**

**ALWAYS UNPLUG THE APPLIANCE DURING MAINTENANCE OPERATIONS, WHEN MOVING IT OR WHILE IT IS NOT IN USE.**

- A fan heater contains parts that generate electrical arcs and sparks. It must not be used in potentially dangerous areas such as areas at risk of fire or explosion, or areas loaded with chemical substances or humidity.
- Do not use the appliance on soft surfaces such as beds, where the grilles may become covered. Always stand the fan heater on a flat, stable surface when in operation to prevent it from overturning. Arrange the cord so that the fan heater and other objects do not rest on it.
- Always unplug the appliance when it is not in use.
- Turn the appliance off if unattended in order to avoid accidents.
- In the event of any anomalies (abnormal noise, or a strange smell), immediately turn off the appliance; do not attempt to repair it, and take it to your local service centre.

### DESCRIPTION OF PARTS



## HOW TO USE THE FAN HEATER

Set up the fan heater in a vertical position on a level and stable surface.  
Connect the power cord to a suitable electric socket (220-240V~/50Hz).  
Use the handle to move it.

**On/off button** (on the back, underneath the air intake grille).

Put the on/off button in the “I” position. When the appliance sounds a beep, this means that the fan heater is ready for use.  
Put the button in the “O” position to switch off the fan heater.

### TIMER ON/OFF

With this product it is possible to postpone both the TIMER ON and TIMER OFF.

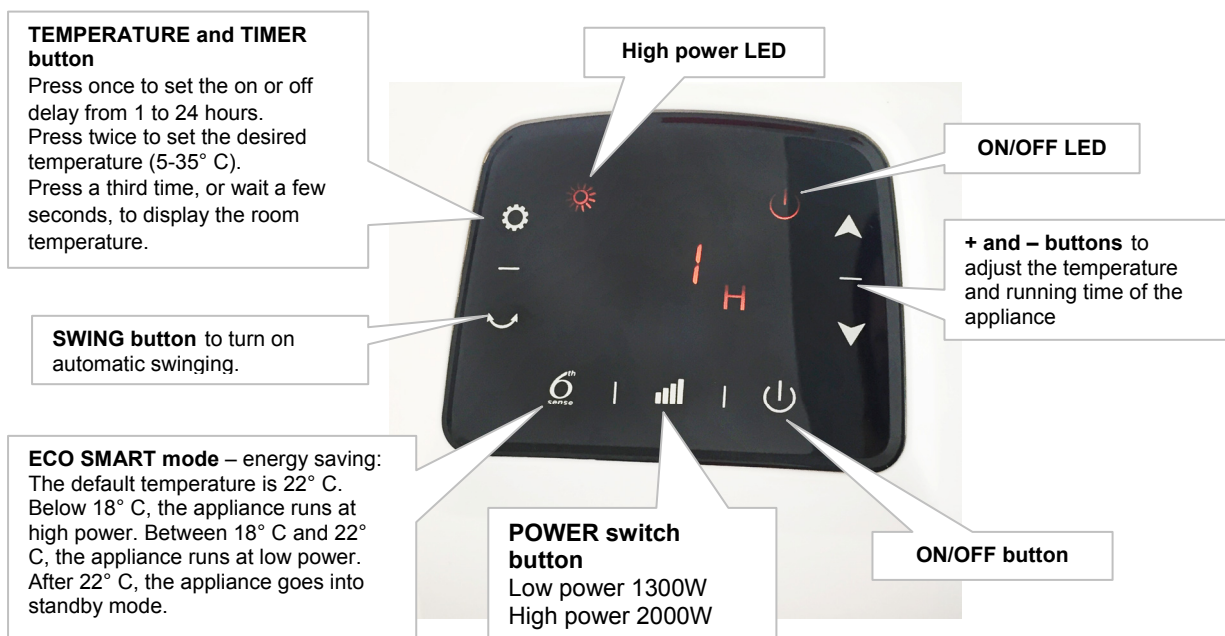
#### TIMER ON

When the fan heater is in standby mode press the TEMPERATURE and TIMER button to set TIMER ON from 1 to 24 hours.

#### TIMER OFF

When the fan heater is working, press the TEMPERATURE and TIMER button to set the TIMER OFF from 1 to 24 ore.

## LED DISPLAY AND CONTROL PANEL

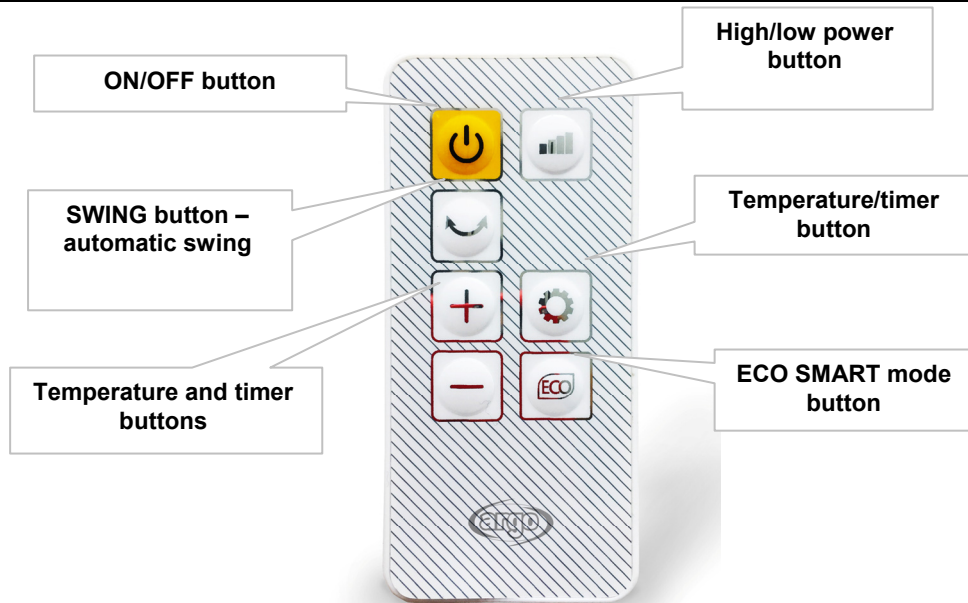


Your settings will be stored even after switching off the appliance and after a power cut.

The appliance is equipped with an anti-tipping device which interrupts operations when the product is tilted.

Do not position the appliance on its side or upside down.

## REMOTE CONTROL



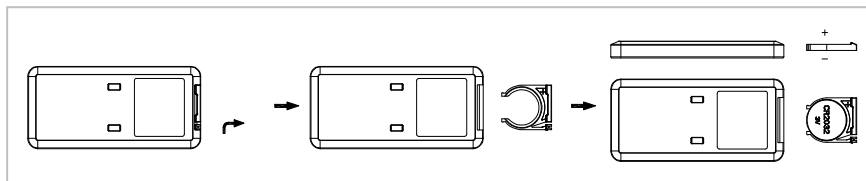
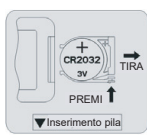
Use Lithium/Manganese button cells, model no. CR2032 -3 V, compliant with Battery Directive no. 2006/66/EC (supplied with the remote control).

### HOW TO INSERT / REMOVE THE REMOTE CONTROL BATTERIES (refer to the diagram below)

Open the battery cover at the back of the remote control (press the back and pull the flap).

Place the battery inside the cover, making sure the polarity is correct.

Slot the cover back into position on the remote control.



### INFORMATION FOR THE CORRECT DISPOSAL OF BATTERIES IN ACCORDANCE WITH EUROPEAN DIRECTIVE 2006/66/EC

Replace batteries when they are depleted. At the end of their life, batteries must be disposed of separately from unsorted waste. They must be taken to designated recycling centres or returned to a retailer providing this service. Separate waste disposal of batteries prevents potential negative effects on the environment and human health resulting from inadequate disposal, and also allows the materials from which it is made to be recovered and recycled in order to achieve significant savings in terms of energy and resources. To highlight the need to dispose of batteries separately, a crossed out waste bin label is displayed on the battery. Illegal disposal of the product by the user shall result in administrative sanctions being applied as per current regulations.

## MAINTENANCE AND STORAGE

**CAUTION: ALWAYS UNPLUG THE APPLIANCE BEFORE CLEANING OR MAINTENANCE OPERATIONS.**  
**IMPORTANT: DO NOT SUBMERGE THE FAN HEATER IN WATER**

### Cleaning the outside surface of the appliance

Use a soft cloth to remove any dust from the fan heater.

If the fan heater is excessively dirty, use a soft cloth dampened with water and neutral detergent at a temperature below 50°C. Leave the fan heater to dry completely before using it again.

Do not use corrosive detergents or solvents such as petrol. Do not wash the appliance with water. Do not use oils, chemical substances or other items that may damage the surface to clean it.

Use a vacuum cleaner to remove dust from the air inlet/outlet grilles.

### STORAGE

If the appliance is not used for prolonged periods, it must be stored together with this manual in its original packaging, in a cool and dry place.

**INFORMATION ON THE CORRECT DISPOSAL OF THE PRODUCT, PURSUANT TO DIRECTIVE 2012/19/EU ON WASTE ELECTRICAL AND ELECTRONIC EQUIPMENT**



At the end of its useful life, this appliance must not be disposed of together with household waste. We call your attention to the crucial role played by the consumer in the reuse, recycling and other forms of recovery of such waste.

The appliance must be disposed of at a registered local authority collection point or returned free of charge to the retailer on purchase of a new like-for-like product.

Sorted disposal of electric and electronic equipment prevents the negative effects on the environment and human health resulting from improper scrapping, and also allows the materials from which it is made to be recovered and recycled, with significant savings in terms of energy and resources.

The sorted disposal requirement is indicated by the crossed out waste bin label displayed on the appliance.



improve your life

[www.argoclima.com](http://www.argoclima.com)