

# MULTISPLIT AIR CONDITIONERS

## MAIN FEATURES



ARGO DUAL 18 DCI R32  
 ARGO TRIAL 21 DCI R32  
 ARGO TRIAL 24 DCI R32  
 ARGO QUADRI 28 DCI R32



X3MI ECO 105SH  
 X3MI ECO 120SH

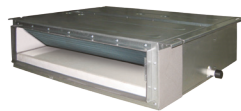
Possibility of choice among different capacities and types of indoor units.



HIGH-WALL



CASSETTE



DUCTED



FLOOR/CEILING



CONSOLE



Compact design



Cold air prevention



**EASY**  
 Easy maintenance



Timer 24H



Intelligent defrosting



"Turbo" function



Auto diagnosis



High efficiency



Auto restart memory



Child lock



Low voltage start-up



Complete protection



Wide voltage



Action wide range



Central control



Long range monitoring



Wired controller (optional)



DC Inverter technology

**A<sup>++</sup>** Cooling

**A<sup>+</sup>** Heating

## LOW AMBIENT COOLING AND HEATING

The ability to work down to  $-15^{\circ}\text{C}$  of outdoor temperature, in both cooling and heating modes, ensures a high product reliability: when the outside temperature changes, the compressor frequency and fan speed adjust accordingly.



## OUTDOOR UNITS

Model	Code	Cooling capacity (kW)	Heating capacity (kW)
ARGO DUAL 18 DCI R32	398000792	5,30	5,65
ARGO TRIAL 21 DCI R32	398000793	6,10	6,50
ARGO TRIAL 24 DCI R32	398000794	7,10	8,60
ARGO QUADRI 28 DCI R32	398000795	8,0	9,50
X3MI ECO 105SH	398000658	10,5	11
X3MI ECO 120SH	398000659	12	13

## INDOOR UNITS

Model	Code	
HIGH-WALL	X3I ECO PLUS 27 HL WF	398000699
	X3I ECO PLUS 35 HL WF	398000701
	X3I ECO PLUS 52 HL WF	398000703
	X3I ECO PLUS 70 HL WF	398000705
CASSETTE	X3I ECO AS 35 HL	398000661
	X3I ECO AS 45 HL	398000662
	X3I ECO CASSETTE GRID	X3IECO-AS-GRID
DUCTED	X3I ECO SD 25 HL	398000663
	X3I ECO SD 35 HL	398000664
	X3I ECO SD 52 HL	398000665
FLOOR/ CEILING	X3I ECO FC 26 HL	398000666
	X3I ECO FC 35 HL	398000667
	X3I ECO FC 45 HL	398000668
CONSOLE	X3I ECO PLUS AF 27 HL	398000739
	X3I ECO PLUS AF 35 HL	398000741
	X3I ECO AF 52 HL	398000671

# FLOOR/CEILING

## MULTISPLIT INDOOR UNITS

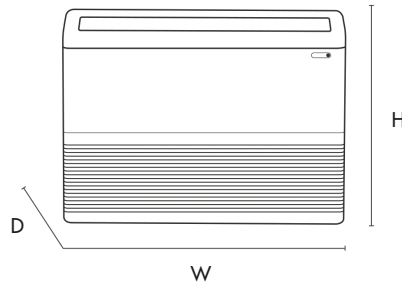


(Standard)  
Infrared remote  
controller



(Optional)  
Wired controller

Sleep comfort mode	8°C heating	LED	Timer	Intelligent defrosting	Save energy	"Turbo" function	Auto diagnosis	Dehumidification	Auto restart memory	4 Fan speeds
iFeel	Only multisplit	-15°C Min. temp. heating	-15°C Min. temp. cooling	Wired controller (optional)						









Floor/ceiling indoor units		X3I ECO FC26HL		X3I ECO FC35HL		X3I ECO FC45HL	
	Units	Cooling	Heating	Cooling	Heating	Cooling	Heating
Capacity	kW	2,6	2,7	3,5	4,0	4,5	5,5
Air flowrate (sh.-h.-m.-l.)	m <sup>3</sup> /h	700-610-540-420		700-610-540-420		700-610-540-420	
Dehumidification	l/h	0,8		1,4		1,8	
Fan speeds	n°	7		7		7	
Sound pressure (sh.-h.-m.-l.)	dB(A)	38-35-30-26		38-35-30-26		38-35-30-26	
Sound power (sh.-h.-m.-l.)	dB(A)	52-49-44-40		52-49-44-40		52-49-44-40	
Liquid pipe diameter	mm (")	6,35 (1/4")		6,35 (1/4")		6,35 (1/4")	
Gas pipe diameter	mm (")	9,52 (3/8")		9,52 (3/8")		12,7 (1/2")*	
Net dimension Outdoor (H/W/D)	mm	665/870/235		665/870/235		665/870/235	
Net weight Indoor/Outdoor	Kg	25		25		25,5	

\* For matching with dual split the adaptor kit (optional) is required

# CONTROLS

## SINGLE AND MULTISPLIT AIR CONDITIONERS

		High-wall	Cassette	Ducted	Floor/ ceiling	Console
WIRELESS		●				
			●	●	●	
						●
WIRED				●		
	 398100674	●	●	●	●	●
DOOR CONTROL	 398100673	●				

● Standard controller supplied with the unit

● Optional controller  
 398100674 - Wired control  
 398100673 Door control