

AQUA UNIT

HYDRONIC INDOOR UNIT



Code	Description
387030220	Wired control for iSERIES indoor units - Mandatory accessory

HYDRONIC UNIT FOR iSERIES

The AQUA UNIT indoor units combined with the outdoor units from the iSERIES range are used to heat and cool hydronic systems, such as radiant systems, low-temperature radiators and fan coil units.

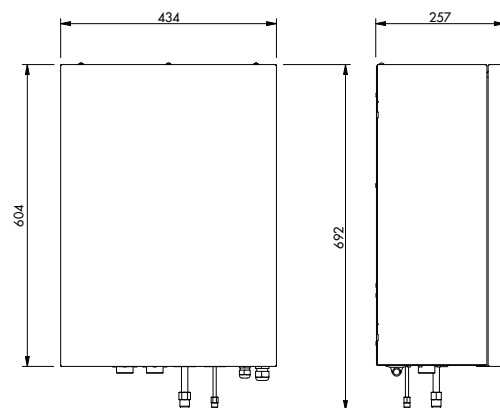
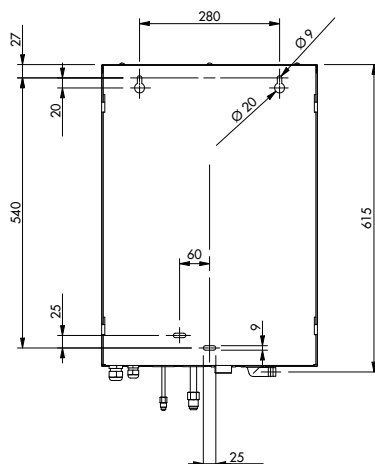
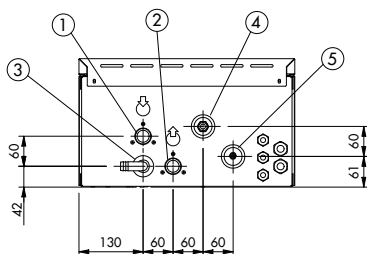
Code	Model	Size	Capacity (kW)	Description
387135037	AUBV V2	B	6.5 kW heating 5.6 kW cooling	Internal Hydronic module, with inverter pump, wall-hung.
387135038	AUCV V2	C	10.6 kW heating 9.1 kW cooling	Internal Hydronic module, with inverter pump, wall-hung.
387135039	AUDV V2	D	13.6 kW heating 11.6 kW cooling	Internal Hydronic module, with inverter pump, wall-hung.

Reference condition

Heating: water temperature 35/30 °C, outdoor air temperature 7 °C
Cooling: water temperature 18/23 °C, outdoor air temperature 35 °C

DIMENSION AND WEIGHT

TECHNICAL DATA		AUBV	AUCV	AUDV
Water inlet connection		1" M	1" M	1" M
Water outlet connection		1" M	1" M	1" M
Condensate drain connection	mm	Ø 18	Ø 18	Ø 18
Gas refrigerant connection		1/2"	1/2"	5/8"
Liquid refrigerant connection		1/4"	1/4"	3/8"
Grommet		-	-	-
Weight	kg	25	27	28



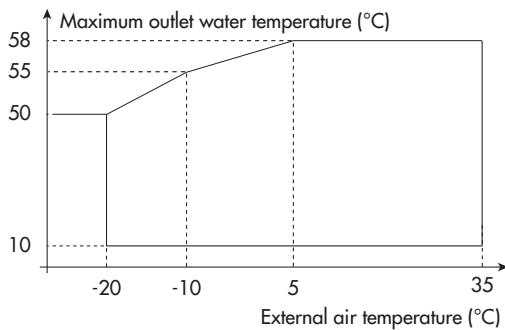
TECHNICAL DATA		AUBV	AUCV	AUDV
Electrical power supply	V/Ph/Hz	220-240/1/50		
Maximum electricity consumption	W	77		
Minimum electricity consumption	W	6		
Hydraulic connection	inch	1" M		
DWV evacuation connection	mm	18		
Outdoor unit connection circuit		circuit A ⁽¹⁾		
Cooling circuit connections (gas)	inch	1/2"	1/2"	5/8"
Cooling circuit connections (liquid)	inch	1/4"	1/4"	3/8"
Refrigerant type		R410A		
Minimum cooling pipe length	m	3		
Maximum cooling pipe length	m	Ref. to outdoor unit datasheets		
Maximum height difference between indoor unit and outdoor unit	m			
Maximum height difference between indoor unit (installation with other UI)	m			
Additional gas charge (if required)	g/m			
Minimum operating water pressure	bar	1,5		
Maximum operating water pressure	bar	2		
Pressure relief valve set	bar	3		
Expansion vessel capacity	L	6		
Expansion vessel pre-charge	bar	1		
Maximum water outlet temperature	°C	up to 58 ⁽²⁾		
Minimum water volume	L	40	80	80
Net weight	kg	25	27	28
Net dimension (H./W./D.)	mm	604x434x257		

(1) Connect only to circuit A of the outdoor unit

(2) With reference to diagram of "Maximum outlet water temperature"

OPERATING CONDITIONS

Maximum outlet water temperature



FLOW RATE CURVES

