



improve your life

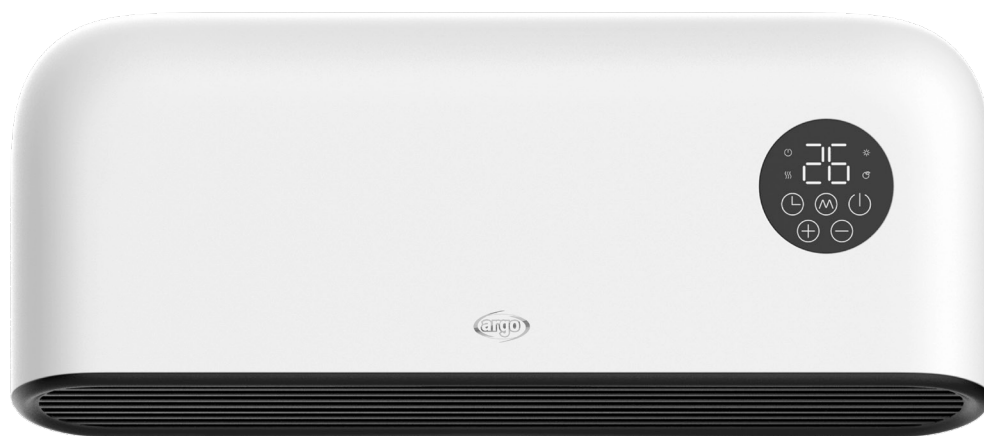
CE

EN

WILLIS

WALL-MOUNTED CERAMIC FAN HEATER

IP22



This product is only suitable for well insulated spaces or occasional use.

OPERATING INSTRUCTIONS

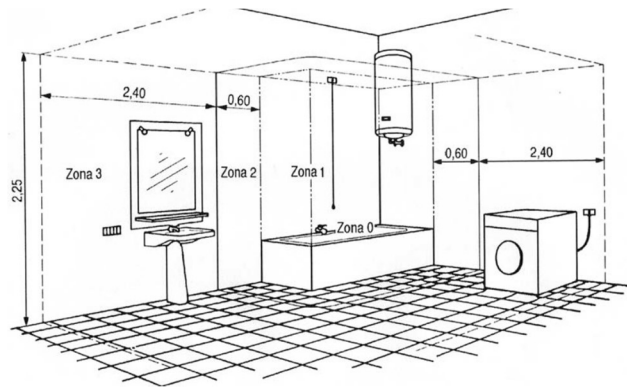
Read the instructions carefully before operating the panel or carrying out maintenance operations. Observe all the safety instructions; failure to observe the instructions may lead to accidents and/or damages. Store these instructions.

GENERAL SAFETY INFORMATION

- Use this fan heater only as outlined in this manual. Any other use not recommended by the manufacturer may cause fire, electric shock or injury to persons.
- Make sure that the type of mains power complies with the electrical requirements of the fan heater (230V~50-60 Hz).
- **This fan heater is designed for wall installation, at a minimum distance of 1.8 m from the floor and 30 cm from both sides of the wall. Do not use it on the floor.**
- This appliance can be used by children of at least 8 years of age and by people with reduced physical, sensory or mental abilities, or who lack sufficient experience or the necessary knowledge, provided that they are supervised or have been instructed on how to use the appliance safely and understand the hazards related to its use.
- Children must not be allowed to play with the appliance.
- Cleaning and maintenance operations normally carried out by the user must not be performed by unsupervised children.
- This product is not a toy.
- Children under the age of 3 must be kept away if not continuously supervised.
- Children aged between 3 and 8 must only turn the appliance on/off as long as it has been placed or installed in its normal operating position and that they receive surveillance or instructions regarding the safe use of the appliance and understand the dangers.
- Children between 3 and 8 years of age must not insert the plug, adjust or clean the appliance or carry out maintenance by the user
WARNING: Certain parts of this product may become very hot and cause burns. Special care should be taken when children and vulnerable people are nearby.
- To avoid the risk of accidentally resetting the thermal protection, this appliance must not be powered through an external switching device, such as a timer, or connected to a circuit that is switched on and off by the utility.
- **WARNING: Do not use the fan heater with a controller or any other device that activates the appliance automatically, as there may be a**

risk of fire if the fan heater is covered or incorrectly positioned.

- The appliance is equipped with an IP22 degree of protection and can be used in private bathrooms in zone 2.



- Do not restrict the air inlet and outlet grilles.
- The appliance heats up significantly when running and can cause burns. Avoid unprotected contact with the hot surface.
- Keep flammable materials, such as furniture, cushions, blankets, paper, cloths, curtains and similar items at least 1 m away from the front, sides and back of the appliance.
- Disconnect the mains power when the appliance is not in use or during cleaning.
- Avoid using the fan heater in dusty environments or in the presence of flammable vapours (e.g. in workshops or garages).
- Do not place anything on the product; avoid placing wet garments on the fan heater.
- Use the fan heater in a well-ventilated area.
- Avoid placing fingers or foreign objects in the air inlet/outlet grilles, as this may lead to electric shock or fire and may damage the fan heater.
- To prevent the risk of fire, do not block the grilles or tamper with them in any way while the fan heater is in use.
- **Do not use the appliance if the power cable or plug are damaged.** If the power cable is damaged, it must be replaced by the manufacturer or its technical assistance service or in any case by a person with a similar qualification, in order to prevent any risk.
- Do not use the fan heater if it has fallen from a certain height or if it has been damaged in any way. Contact a service centre to check the fan heater or make any necessary electrical or mechanical repairs.
- The most common cause of overheating is the build-up of dust in the

appliance. Remove accumulated dust, after taking the plug out, by cleaning the grilles using a vacuum cleaner.

- Do not use any abrasive products to clean the appliance. Clean it using a damp (not wet) cloth rinsed in soapy water. Remove the plug from the socket before performing any maintenance.
- To disconnect the fan heater, turn the switch to OFF and remove the plug from the socket. Pull on the plug only. Do not pull on the cable when turning off the fan heater.
- Do not place any objects on the cable and also avoid bending the cable.
- Using extension leads are not recommended as they may overheat and cause a fire hazard. Never use a single extension lead to operate multiple appliances.
- Do not immerse the power cable, plug or any other part of the appliance in water or other liquids.
- Do not touch the plug with wet hands.
- Do not place the fan heater above or near another heat source.

WARNING: AVOID COVERING THE FAN HEATER TO PREVENT IT FROM OVERHEATING.

The symbol below signals this warning:



- The fan heater may cause the risk of fire if, while operating, it is covered or comes into contact with **flammable** material including curtains, drapery, blankets, etc. **KEEP THE FAN HEATER AWAY FROM THESE MATERIALS.**
- Do not connect the fan heater to the power supply until it has been correctly assembled or positioned.
- Do not run the cable under carpets. Do not cover the cable with blankets, carpets or similar materials. Place the cable away from busy areas and where it cannot accidentally be pulled out.
- Do not operate the fan heater in close proximity to bathtubs, showers, washbasins or pools.
- Do not use in bathrooms.
- Do not position the fan heater beneath a power socket.
- Do not operate the appliance outdoors.
- Upon initial start-up, the fan heater may emit a slight, harmless smell.

- This smell is a normal effect of the initial heating up of the internal heating elements, and should not recur subsequently.

WARNING: THE ON/OFF SWITCH IS NOT THE ONLY METHOD OF DISCONNECTING THE MAINS POWER. ALWAYS UNPLUG THE APPLIANCE DURING MAINTENANCE OPERATIONS, WHEN MOVING IT OR WHILE IT IS NOT IN USE.

- A fan heater contains parts that generate electrical arcs and sparks.
- It must not be used in potentially dangerous areas such as those subject to the risk of fire or explosion, or areas filled with chemical substances or humidity.
- Always unplug the appliance when it is not in use.
- Turn the appliance off if unattended, in order to prevent accidents.
- In the event of any anomalies (abnormal noise or a strange smell), immediately turn off the appliance; do not attempt to repair it but take it to your local service centre.

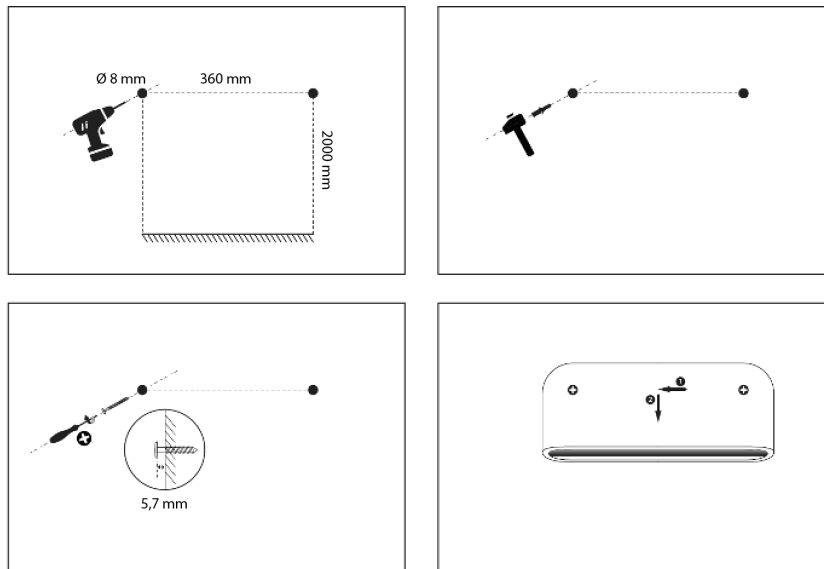
DESCRIPTION OF PARTS



1) Air emission grille
2) LED display

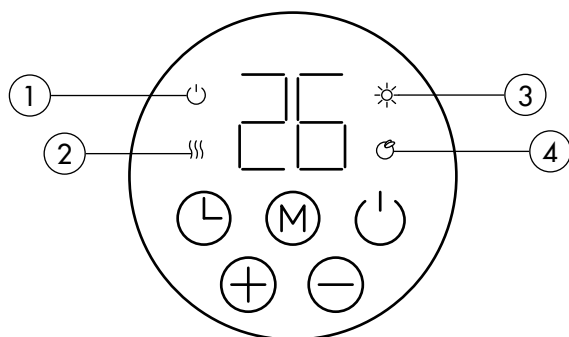
3) Front panel
4) Remote control

HOW TO INSTALL THE FAN HEATER



- 1) Drill holes on the wall according to the instructions inside the box.
Warning: Be sure to keep safe distances as shown in the above drawing.
- 2) Fit the fastener tube in the hole and fit the screws in the fastener tube
- 3) Gently hang the unit on the screws,
Warning: Before using the heater, make sure it's mounted tightly on the wall.

CONTROL PANEL



SOFT TOUCH BUTTONS

	Standby: on/off
	Mode selection
	Key +
	Key -
	Timer

ICONS ON THE PANEL

- 1) Standby: on/off
- 2) Heating mode active
- 3) COMFORT mode
- 4) ECO mode

ON/OFF BOTTON

Connect the power cord to an appropriate power outlet (230V~50-60 Hz), as indicated on the data plate.

The fan heater emits a beep and the LED lights up on the control panel.

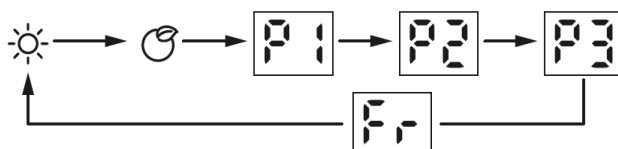
Touch the  buttons to turn on the fan heater, the factory default settings, on first use, are as follows:





- Heating mode: COMFORT
- Set temperature: 22 °C
- Open window function disabled
- Timer disabled

To switch off the fan heater touch 

HEATING MODE BUTTON

Touch the  buttons to select the desired heating mode in the following circular sequence:



- COMFORT mode: touch the  and  buttons to set the temperature from 10 °C to 35 °C
- ECO mode: touch the  and  buttons to set the temperature from 6 °C to 31 °C
- Anti-Frost mode: on the display buy Fr and the reference temperature is 7 °C. The temperature cannot be adjusted
- Pre-selection programs for heating P1/P2/P3
NB: If the time and day setting is not finished, to set the P1/P2/P3 programs for the first time, it will be necessary to select the time and day in advance.

Program P1 (Monday to Sunday) - Preset program that cannot be changed:



Program P2 (Monday to Friday) - Preset program that cannot be changed:



Program P2 (Saturday and Sunday) - Preset program that cannot be changed:



Program P3 (Monday to Friday) - Program that can be modified:



Program P3 (Saturday and Sunday) - Program that can be modified:



Setting the modifiable program P3:

1. When the P3 program is selected, press the  button for about 3 seconds to set the selection of the day.
2. The display will show **d1** press the  and  buttons to select the day from **d1-d7** (Monday to Sunday).

Press the **M** buttons to confirm the selected day and set the desired time.

3. The display will show **00** press the **+** and **-** buttons to set the time (00-23). Then press the **M** button for select the heating mode for each hour of operation (the icons will appear on the display corresponding to the set mode

COMFORT mode , ECO mode )

4. Repeat the operation until the programming is completed for each hour and each day of operation.

NB: After selecting the heating mode at 11 pm, press the **+** button to reset daily programming.


When the display shows **d7** press the **+** buttons to finish the selections and the display shows **P3**

TIMER BUTTON AND WEEKLY PROGRAMMING

Press and hold this button  on the control panel for 3 seconds to select the timer and weekly schedule.


The display shows "d", then press the **+** and **-** buttons to select the days of the week in the following sequence:

1	Monday
2	Tuesday
3	Wednesday
4	Thursday
5	Friday
6	Saturday
7	Sunday

Press the  to confirm the desired day and set the time, the display will show **H**

Then press the **+** and **-** buttons to select the hour, then press the  buttons to confirm it.

Appears on the display **M**.

Then press the **+** and **-** buttons to set the minutes, then press the  buttons to confirm it.


NB: If the power supply is removed, the weekly programming and the timer are reset to the factory settings.


FUNCTION "OPEN WINDOW SENSOR"


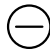
To activate the open window function, press the **M** and **+** buttons, the display will show **F0**, after 3 seconds, the display will show the set temperature.

To deactivate the open window function, press the **M** and **-** buttons, the display will show **FF**, after 3 seconds, the display will show the set temperature.

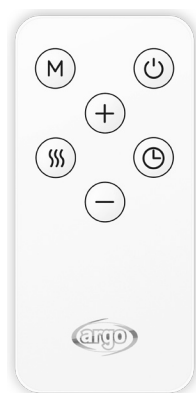
OFF TIMER FUNCTION

Touch the  button once, the corresponding LED on the control panel lights up and flashes on the display "0 H";

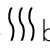
keep the  button pressed, the display will show the shutdown interval: 2H - 4H - 8H.

Or touch the  and  buttons to set the sleep timer from 0 to 9 hours.

REMOTE CONTROLLER



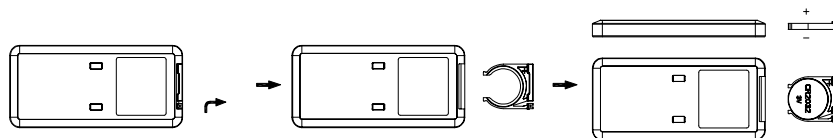
The functions of the remote control correspond to those on the control panel. The heating power level can be selected only by remote control.

Press the  button to select the power: the display shows "H0" which means only ventilation, "H1" which corresponds to the low power (1000 W), "H2" which corresponds to the high power (2000 W).

Use a Lithium/Manganese button cell, model no. CR2025-3 V, compliant with Battery Directive No.N 2006/66/EC and amendments by Directive 56/2013/EU. The battery is supplied with the product, on first use remove the plastic tab inserted in the remote control to allow its operation.

HOW TO INSERT/REMOVE THE REMOTE CONTROL BATTERY (refer to the drawings below)

Open the battery door on the back of the remote control (press the back and pull the door). Place the battery in the door, taking care to check the correct positioning of the polarity. Insert the cover into the remote control.



WARNINGS FOR BATTERIES

- Batteries must not be exposed to heat sources such as fire, sun or similar sources; remove batteries if they start to heat up or if the appliance is not used for a long time
- Batteries must be installed correctly in the appropriate battery compartment;
- Dispose of batteries that have reached the end of life or have been damaged in accordance with the national regulations in force and listed below.
- In case of loss of battery fluid, remove all batteries, preventing the spilled liquid from coming into contact with the skin or clothing. If the liquid from the battery comes into contact with the skin or clothing, wash the skin with water immediately. Before inserting new batteries, thoroughly clean the battery compartment with a paper towel cloth, or follow the battery manufacturer's recommendations for cleaning.

Misuse of batteries can cause them to leak, overheat or explode.

This liquid is corrosive and can be toxic. It can cause burns of the skin and eyes, and is harmful to swallow.

To reduce the risk of injury:

- Keep batteries out of the reach of children.
- Do not heat, open, puncture, cut or throw batteries into fire.
- Do not mix old and new batteries or batteries of different types
- Do not leave metal objects that may come into contact with the battery terminals and therefore may heat up and/or cause burns



INFORMATION FOR THE CORRECT DISPOSAL OF BATTERIES IN ACCORDANCE WITH EUROPEAN DIRECTIVE 2006/66/EC AND CHANGES INTRODUCED BY DIRECTIVE 2013/56/EU

Replace batteries when they are depleted. At the end of their life, batteries must be disposed of separately from unsorted waste. They must be taken to designated recycling centres or returned to a retailer providing this service. Separate disposal of batteries prevents potential negative effects on the environment and human health due to inadequate disposal, and also allows their constituent materials to be recovered and recycled, resulting in significant savings in terms of energy and resources. In order to highlight the obligation regarding separate disposal, the battery carries the crossed-out dustbin symbol. Illegal disposal of the product by the user may lead to administrative sanctions being applied as per current regulations.

MAINTENANCE AND STORAGE

CAUTION: ALWAYS UNPLUG THE APPLIANCE BEFORE CLEANING OR PERFORMING ANY MAINTENANCE.
IMPORTANT: DO NOT SUBMERGE THE FAN HEATER IN WATER.

Cleaning the outside surface of the appliance

Switch off the appliance and unplug it before cleaning or moving the appliance. Use a soft cloth to remove any dust from the product. If this is not enough, use a soft cloth dampened with water and neutral detergent at a temperature below 50 °C. Leave the appliance to dry thoroughly before using it again. Do not use corrosive detergents or solvents such as petrol. Do not wash the appliance with water. When cleaning the appliance, do not use oils, chemical substances or other items that may damage the surface. Use a vacuum cleaner to remove dust from the air inlet/outlet grilles.

STORAGE

If the appliance is not used for prolonged periods, it must be stored together with this manual in its original packaging, in a cool and dry place.

INFORMATION REQUIREMENTS FOR ELECTRIC LOCAL SPACE HEATERS

Table 2 - Annex II - Ecodesign requirements - Mandatory product information - COMMISSION REGULATION (EU) 2015/1188 of 28 April 2015 laying down detailed rules for the application of Directive 2009/125/EC of the European Parliament and of the Council on ecodesign requirements for local space heaters.

Model identifier(s): WILLIS						
Item	Symbol	Value	Unit	Item	Unit	
Heat output			Type of heat input, for electric storage local space Heaters only (select one)			
Nominal heat output	P _{nom}	2,0	kW	Manual heat charge control, with integrated Thermostat	[no]	
Minimum heat output (indicative)	P _{min}	1,0	kW	Manual heat charge control with room And/or outdoor temperature feedback	[no]	
Maximum continuous heat output	P _{max,c}	2,0	kW	Electronic heat charge control with room And/or outdoor temperature feedback	[no]	
Auxiliary electricity consumption			Fan assisted heat output			
At nominal heat output	e _{lmax}	0	kW	Type of heat output/room temperature control (select one)		
At minimum heat output	e _{lmin}	0	kW	Single stage heat output and no room Temperature control	[no]	
In standby mode	e _{lsb}	0,000	kW	Two or more manual stages, no room Temperature control	[no]	
				With mechanic thermostat room Temperature control	[no]	
				With electronic room temperature control	[no]	
				Electronic room temperature control plus Day timer	[no]	
				Electronic room temperature control plus Week timer	[yes]	
			Other control options (multiple selections possible)			
				Room temperature control, with presence Detection	[no]	
				Room temperature control, with open Window detection	[yes]	
				With distance control option	[no]	
				With adaptive start control	[no]	
				With working time limitation	[yes]	
				With black bulb sensor	[no]	
Seasonal energy efficiency of space heating					η _s (%)	38
Contact details:		ARGOCLIMA SPA - Via A. Varo,35 - Alfianello (BS) - ITALY - www.argoclima.com				



INFORMATION FOR THE CORRECT DISPOSAL OF THE PRODUCT pursuant to art. 26 Legislative Decree 14/03/14, no. 49 "IMPLEMENTATION OF EUROPEAN DIRECTIVE 2012/19/EU ON WASTE FROM ELECTRICAL AND ELECTRONIC EQUIPMENT"

At the end of its useful life, this appliance must not be disposed of with household waste. We recall the important role of the consumer in contributing to the reuse, recycling and other forms of recovery of such waste. The device must be delivered separately at appropriate municipal collection centers or free of charge at retailers, upon purchase of a new equivalent type of equipment. For products with an external dimension of less than 25 cm, this free waste collection service must be provided free of charge by large retailers (sales area of at least 400 m²) even if no equivalent equipment is purchased. Disposing of an electrical and electronic device separately allows you to avoid possible negative effects on the environment and human health resulting from inappropriate disposal and allows you to recover and recycle the materials it is made of, with important savings in energy and resources. To emphasize the obligation to dispose of these equipment separately, the product bears the symbol of the crossed-out bin.



improve your life

www.argoclima.com

Argoclima assumes no responsibility for any errors or inaccuracies in the content of this manual and reserves the right to make any changes to this manual at any time and without notice, deemed appropriate for any technical or commercial need.