



EN

**AIR PURIFIER**

**PURY PRO**



## **OPERATING INSTRUCTIONS**

Read the instructions carefully before operating or servicing the air purifier.

Observe all the safety instructions; failure to observe the instructions may lead to accidents and/or damage. Store these instructions in a safe place for future reference.

## Chapter 1 Technical Information

### 1. Summary



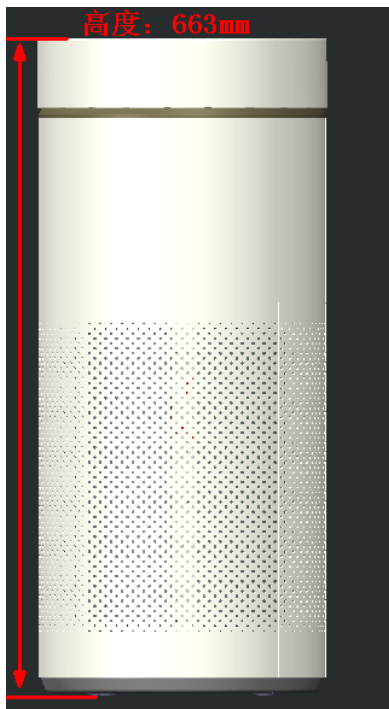
---

## 2. Specifications

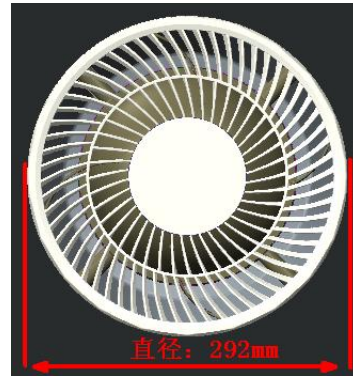
No	Item	Unit	Data
1	Model	--	
2	Product Code	--	
3	Series Name	--	Air Purifier
4	Rated Voltage	V~	220
5	Rated Frequency	Hz	50
6	Phases	--	3
7	CADR	m <sup>3</sup> /h	350
8	Power Input	W	25
9	Suggested Room Size	m <sup>2</sup>	25~42
10	Isolation	--	I 类
11	Moisture Protection	--	IPX0
12	Dimension of Package(L*W*H)	mm	371×365×792
13	Net Weight	kg	6.5
14	Gross Weight	kg	8.5

Note: If above parameters are changed, please refer to the product.

### 3. Outline Dimension



Height

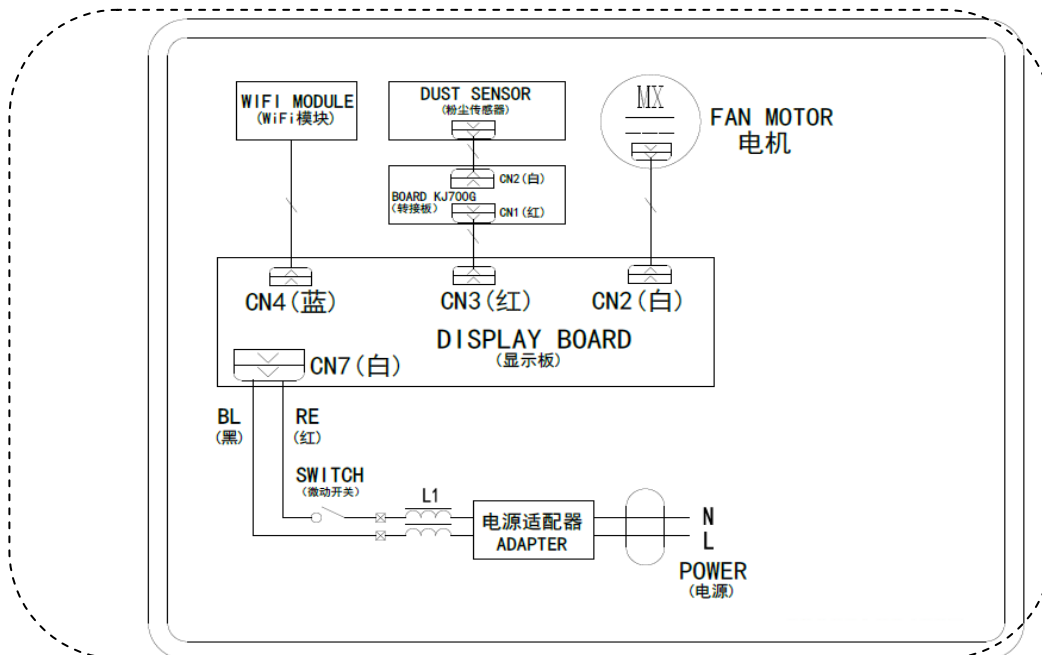


Dimension

Unit: mm

### 4. Electrical Part

#### 4.1 Wiring Diagram

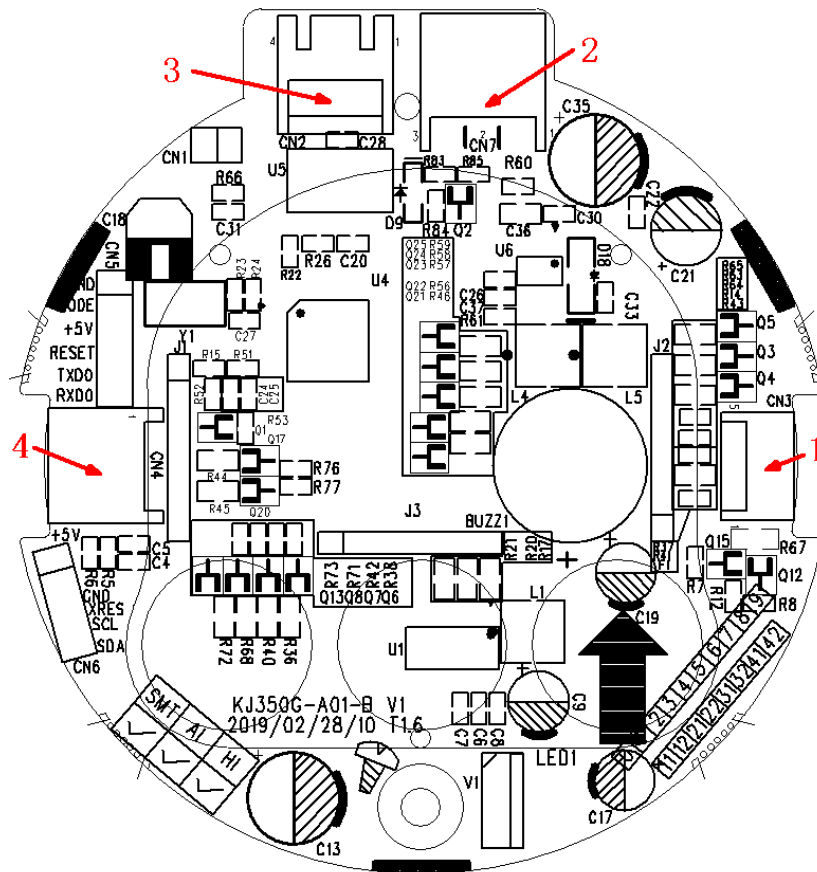


This wiring diagram is subject to change without notice; please refer to the one supplied with the unit.

## 4.2 PCB Printed Diagram

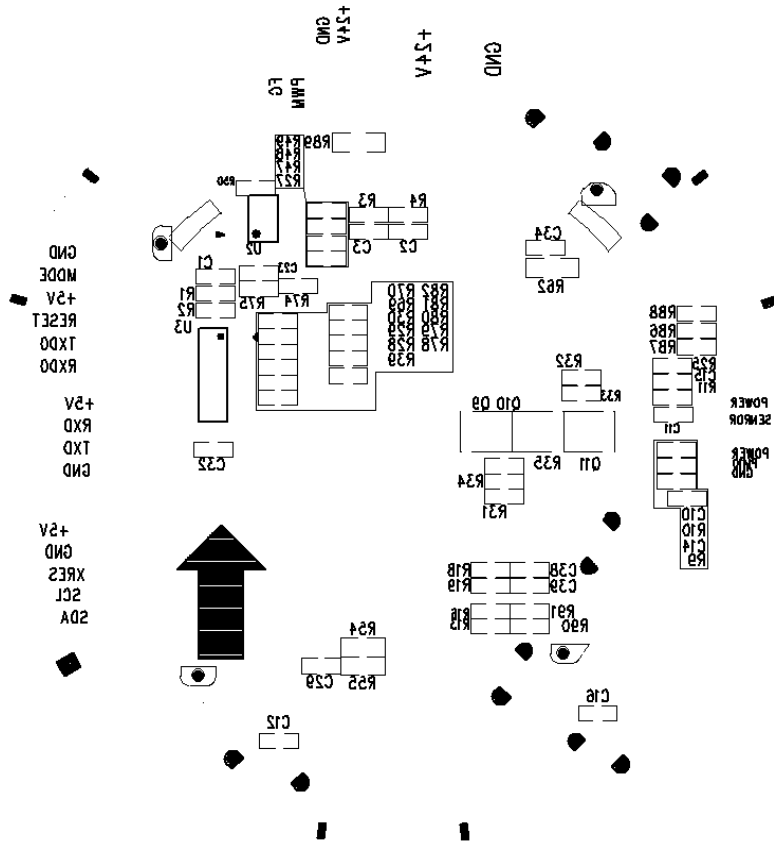
### 4.2.1 Printed Diagram of Display Board

- Top view

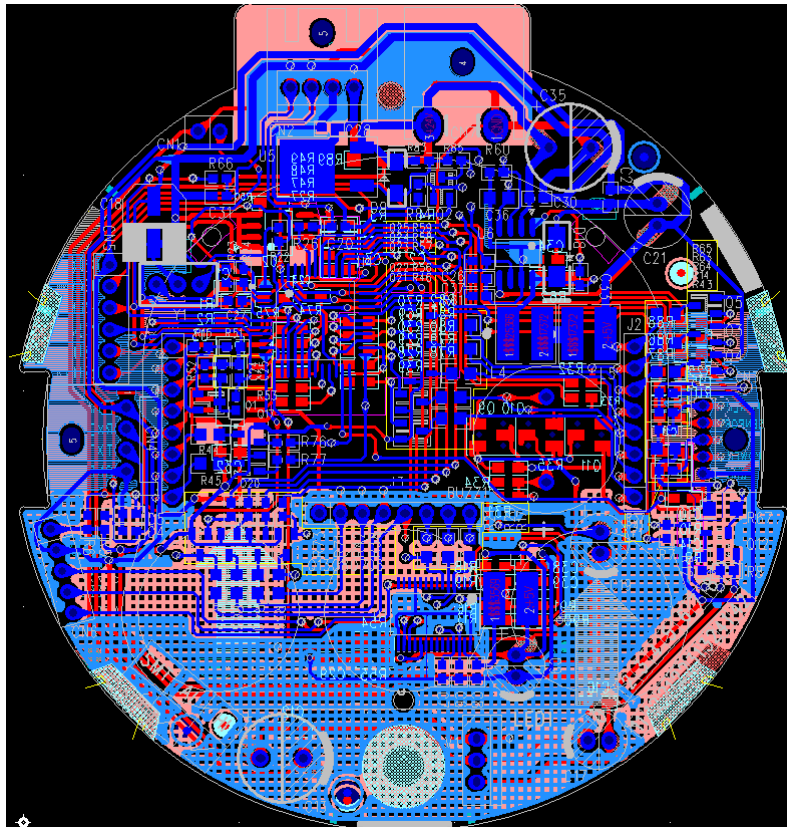


No.	Name
1	Dust sensor interface
2	24V interface of power adaptor
3	Low-voltage DC motor interface
4	communication interface

● Bottom view

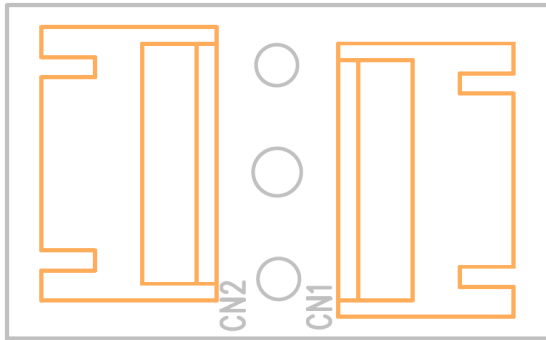


● Assembly



### 4.2.3. Pinboard (KJ350G-A01) Printed Diagram

● Top view

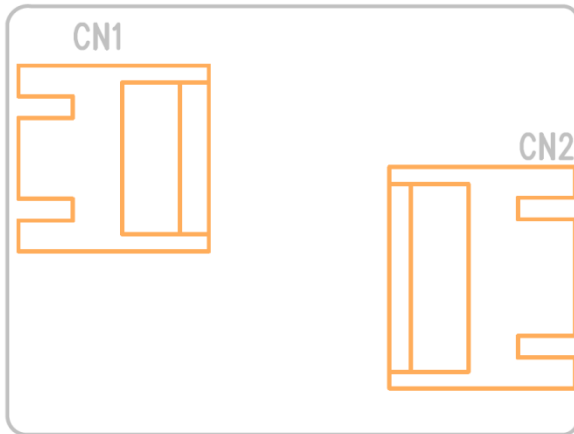


● Bottom view

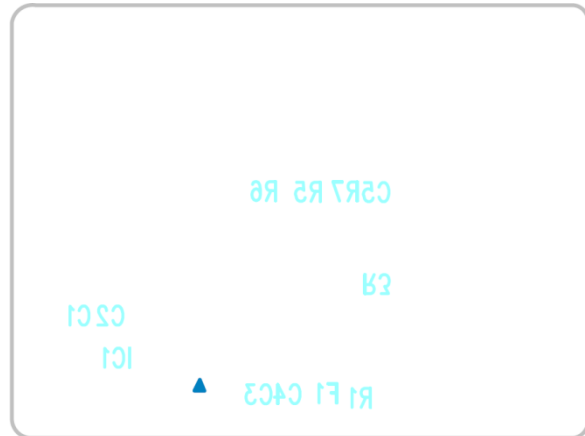


### 4.2.4. Pinboard (KJ700G-A01) Printed Diagram

● Top view



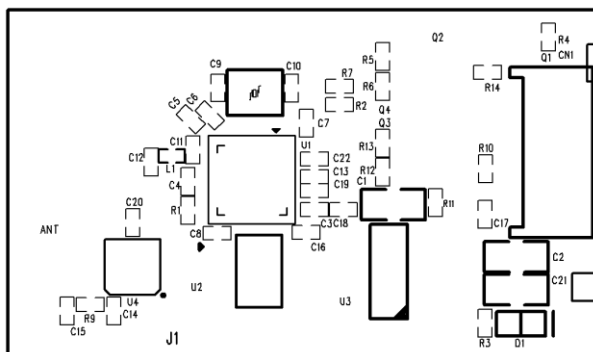
● Bottom view



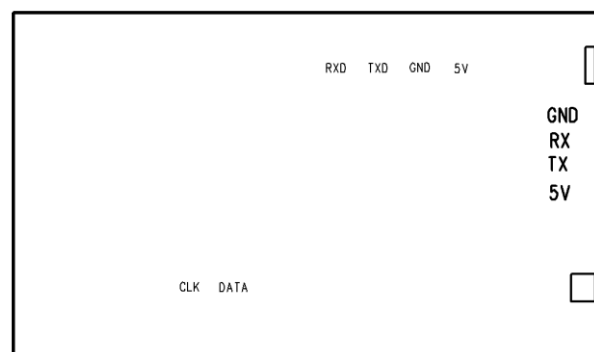
### 4.2.5. Detecting Plate KJ350G-A01(RFID) Printed Diagram



● Top view



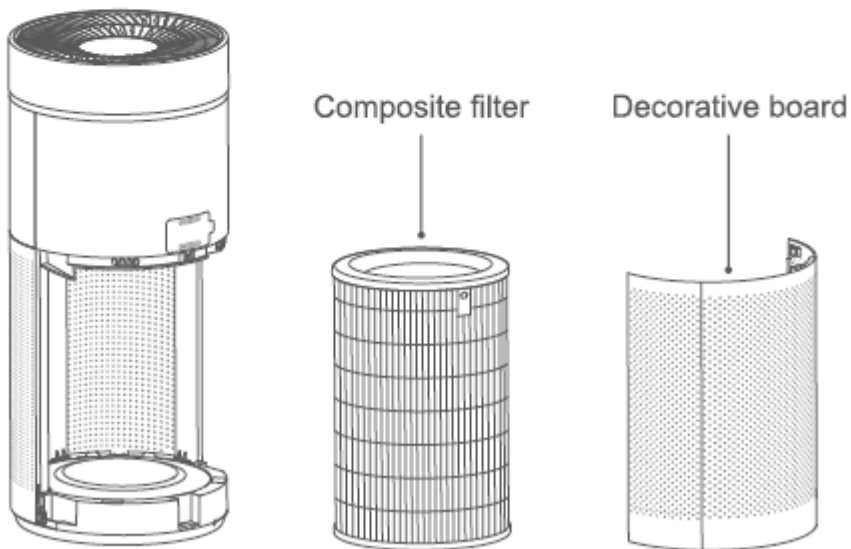
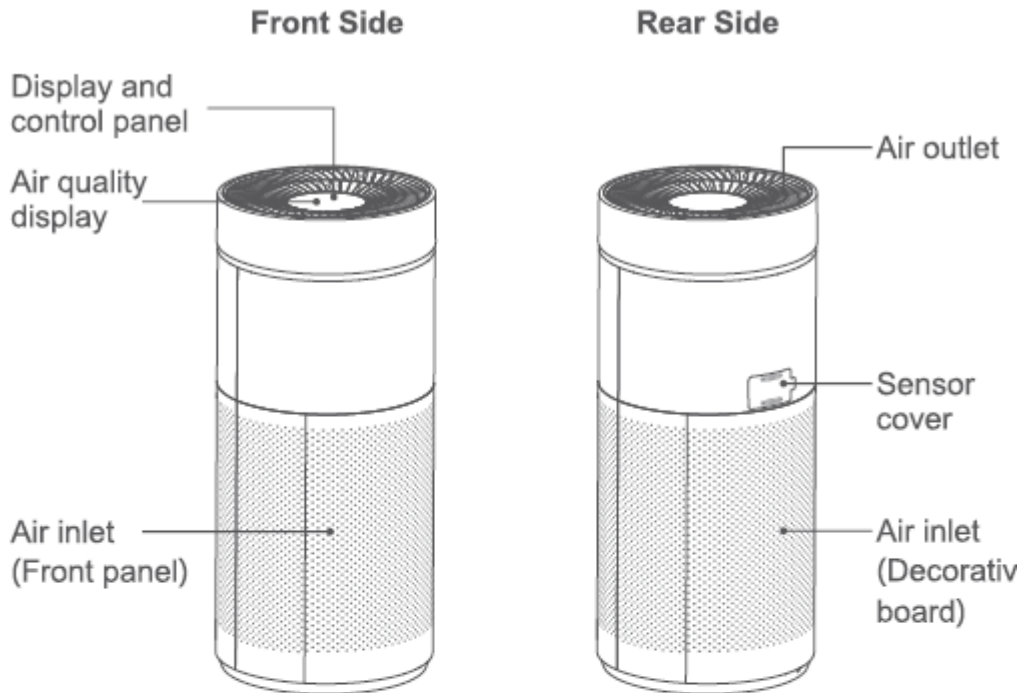
● Bottom view



## 5. Product Instruction

### 5.1 Parts Name

#### Parts' Name



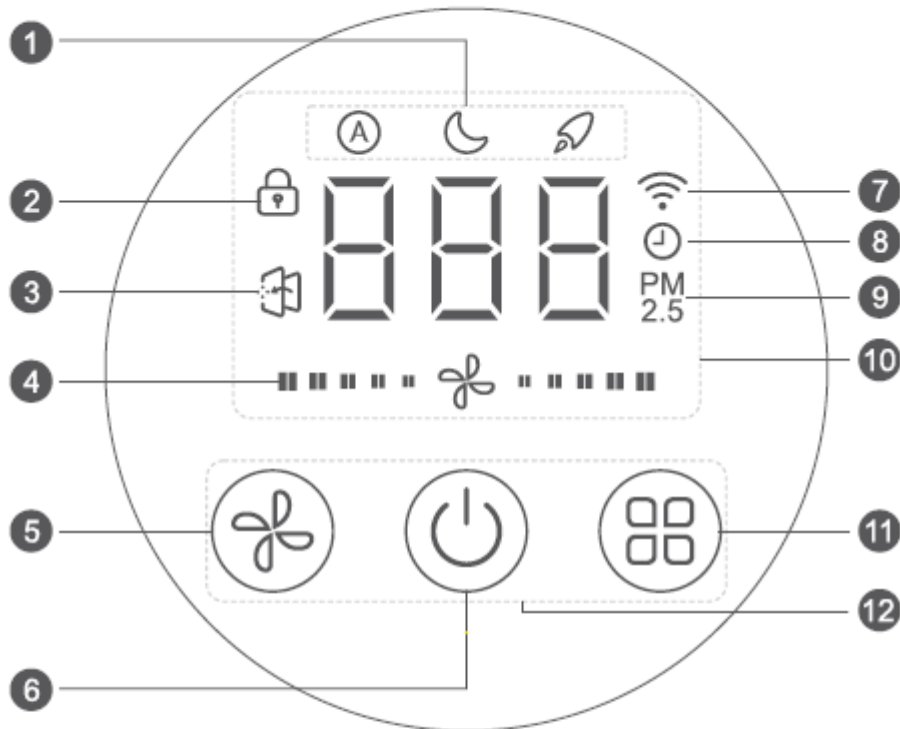
Note: The quantity of attached accessories and the structure diagram is subject to change without notice. Please refer to the current product.



## 5.2 Display and control panel

### Operation Instruction

#### Display and control panel



- |                               |                         |
|-------------------------------|-------------------------|
| 1 Mode status display         | 7 WiFi status display   |
| 2 Child lock status display   | 8 Timer status display  |
| 3 Filter replacement reminder | 9 Air quality indicator |
| 4 Fan speed status display    | 10 Display part         |
| 5 Fan speed button            | 11 Mode button          |
| 6 ON/OFF button               | 12 Operation part       |

Note: PM2.5 value may be different when it detected by different measuring method and measuring instrument. The data is only for reference.

---

## 5.3 Product Operation

### Put through the power

- Once the complete unit is put through the power, the display panel will be on for 2s and give out sound. The "⏻" button is in red.

**Note:** The energization status as above indicates the standby status.

### Turn on the unit


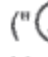
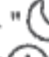
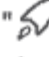






- Under standby status, if the timer on smart phone App is turned on, when time is reached, the unit will be turned on.
- This product is with power-off memory function. The mode and the speed all can memory the previous status before the unit is turned off. If turn on the unit for the first time, the defaulted status is auto mode and notch 2 fan speed.
- Under standby status, press "⏻" button to turn on the unit. All buttons are in white and corresponding mode icon will be on. The current PM2.5 will be displayed on the display panel.
- When there's no operation for 40s during the operation, the display panel and all buttons will enter into half-light status, Under half-light status, press other buttons except "⏻" button and then screen will resume to the highlighted status.

**Note:** When the unit has been turned on just now, PM2.5 value is not stable. The screen displays "---". The display will be normal when the value is stable.



- Under sleep mode, the air quality indicator is off. PM2.5 digital display and fan speed status display will be off. When there's no operation for 40s, all other display will be off except "☾" icon and button indicator are in half-light status.

---


### Mode selection

- When the air purifier is operating, press "" button to select the modes ("" - "" - "").
- Under "" mode, "" icon is on. The air purifier automatically switches the fan speed according to current air quality.
- Under "" mode, "" icon will be on. The air purifier operates at the low fan speed.
- Under "" mode, "" icon will be on. The air purifier operates at the high fan speed.


### Fan speed selection

- This product has 5 fan speeds.
- Under on status, the fan speed will change once after each pressing of "" button and the fan speed will change in the sequence of "1→2→3→4→5" circularly.
- Under any working modes, press "" button to switch to manual mode and then adjust the fan speed directly.

### Timer adjustment

- This function can be operated only on "GREE+"App. Please refer to the "GREE+"App Operation Manual for App download.
- When the timer function on the App is turned on, the "" icon on the control panel of complete unit will be on.

### WiFi setting

- When turning on the unit, hold the "" button on the complete unit for 2s to reset WiFi.
- WiFi icon flashes and it enters into WiFi configuration status. At this time, conduct the network configuration by smart phone.
- For operation method in details, please refer to the "GREE+"App Operation Manual.
- This device includes the radio transmitting module whose CMIIT ID is 2018DP1940.

### Child lock setting

- Press "" button on smart phone App to turn on or turn off child lock.

---

### Turn off the unit

- Under on status, press "⏻" button to enter into the standby status.
- Under on status, if turn on timer on App, when time is reached, the unit will enter into the standby status.

### Replace filter

- When the service life of composite filter is over, the icon of "🔄" flashes to remind the user to replace the composite filter.
- Please purchase the composite filter at the designated service provider or customer service center and replace it by referring to the "Notices before Operation".
- Once the composite filter is replaced, put through the power again.
- Hold "🔄" button for 2s to reset it and the complete unit enters into the standby status. Press "⏻" button to turn on the unit again.

## 5.4

# GREE+ App Operation Manual

## Download and Installation



GREE+ App Download Linkage

- Scan the QR code or search "GREE+" in the application market to download and install it. When "GREE+" App is installed, register the account and add the device to achieve long-distance control and LAN control of Gree smart home appliances.
- For more information, please refer to "Help" in App.

## Chapter 2 Maintenance

### 6. Precautions before Maintenance

#### **Safety Warning: Important!**

#### **Please read the following notices carefully before maintenance:**

1. For the maintenance personnel, the following contents are very important for the maintenance services and safe, high-efficiency and low-cost operation of air purifier.
2. Please do comply with the following notices, which are important contents about safety.
3. Each maintenance step must comply with the instruction.
4. Comply with all national and local electrical regulations.
5. Please pay attention to all warnings and notices in this manual.
6. Pay attention to the safety during maintenance; prohibit violating the regulations to avoid accidents such as electric shock.

#### **Warning:**

#### **Notices for electrical safety:**

1. Before checking or maintaining the air purifier, you must cut off the power supply of air purifier.
  2. You must make sure the power cord is not pressed by hard objects.
  3. If the power cord or connection wire is not long enough, you must get the power cord and connection wire from the manufacturer or agent. Do not prolong the wire by yourself.
  4. You must apply the power supply with the same voltage and frequency as shown in the nameplate.
  5. Do not pull out the power cord when the air purifier is working, to avoid damaging the circuit.
  6. Do not place any object on the top of air purifier to make sure there is no blockage at the air outlet or air inlet of air purifier. Do not use the air purifier near the wall or curtain.
  7. Do not use heating device around the air purifier.
- Improper operation mentioned above may lead to fire hazard, electric shock or other injury.

## 7. Clean and Maintenance

### ■ Clean and maintenance for filter and dust sensor

For the best performance, please clean the composite filter and dust sensor once every 2 months. If the environmental condition is bad, please clean it frequently.

#### 1. Clean and replace the filter

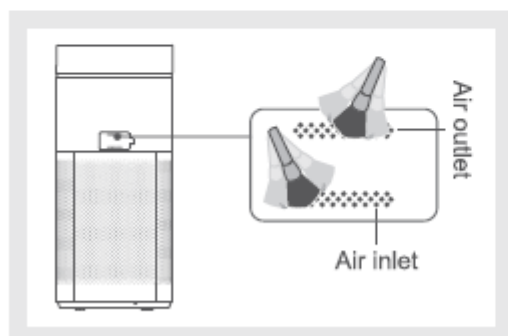
**Clean:** Take out the composite filter and then use brush or dust collector to clean its surface. After that, reinstall the filter at the unit.

**Replacement:** Please refer to "Notices before Operation" for replacement.

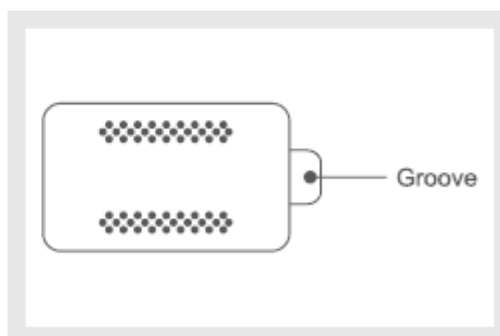
**Note:**

1. Do not use water or other abluent to clean the composite filter.
2. The composite filter belongs to consumable items, which is not covered by the warranty.

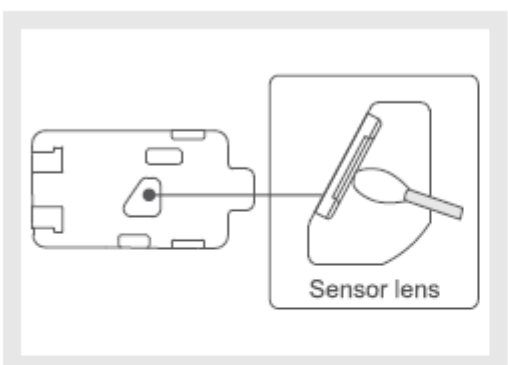
#### 2. Clean the dust sensor



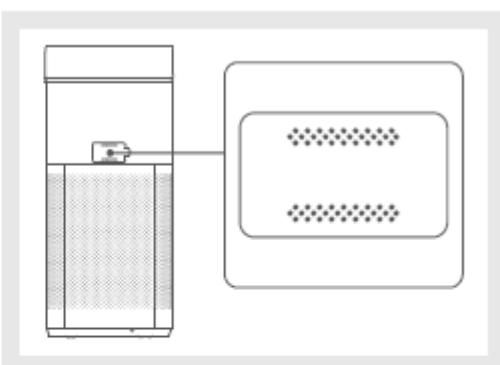
- ① Clean the air inlet and air outlet of dust sensor.



- ② Put the finger at the groove, and then open the cover of sensor outwards.



- ③ Use moist cotton swab to wipe the sensor lens slightly and then use dry cotton swab to wipe it to make sure no water left on the sensor.



- ④ Close the cover of sensor.


---

**☰ Warm remind**

- ※ The power supply for the air purifier must be cut off before cleaning or maintaining it.
- ※ Do not wash the complete unit with water. Otherwise, it may cause electric shock. Only use soft and dry cloth to wipe the unit.
- ※ Do not use corrosive or volatile and flammable chemicals to clean the product; otherwise, it will damage the appearance.

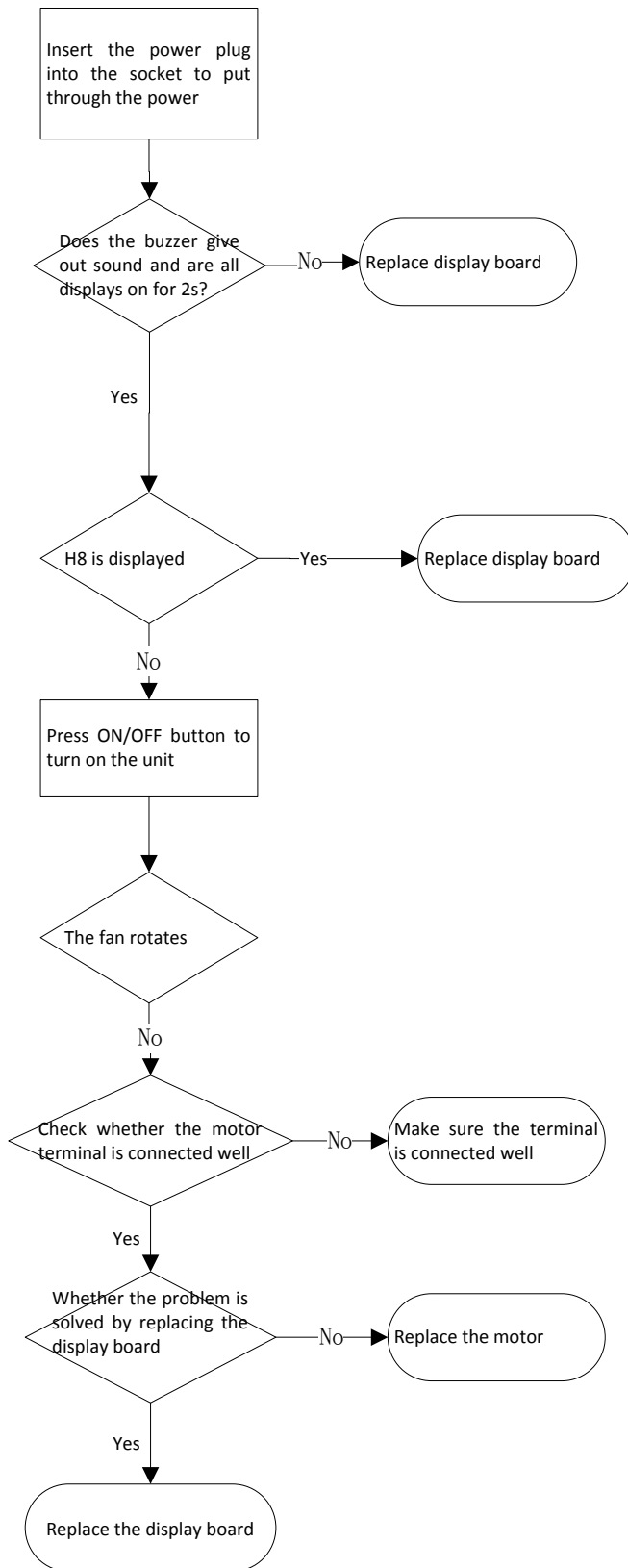
## 8. Troubleshooting

### 8.1 Troubleshooting for Improper Installation and Maintenance

<p><b>There is peculiar odor in the out airflow</b></p>	<p>If the unit operates in high humidity environment (such as in rainy season or there is also humidifier in working).</p>	<ul style="list-style-type: none"> <li>You are suggested to sun-dry or air-dry the filter for a while, then you can reuse it.</li> </ul>
<p><b>Others</b></p>	<p>                       indicator flashes                 </p>	<ul style="list-style-type: none"> <li>It indicates it needs to replace the composite filter. Please replace the filter at the designated service provider or customer service center and replace the filter by referring to the "Notices before Operation".</li> </ul>
<p>When the operation environment is good, the air quality indicator color is always in red</p>	<ul style="list-style-type: none"> <li>The dust sensor becomes dirty. Please clean the dust sensor by referring to the "Clean and Maintenance".</li> </ul>	
<p>PM2.5 value displays "L3/H8/H3/---"(3min above)</p>	<ul style="list-style-type: none"> <li>Please contact the designated service provider or customer service center.</li> </ul>	



## 8.2 Troubleshooting for Controller

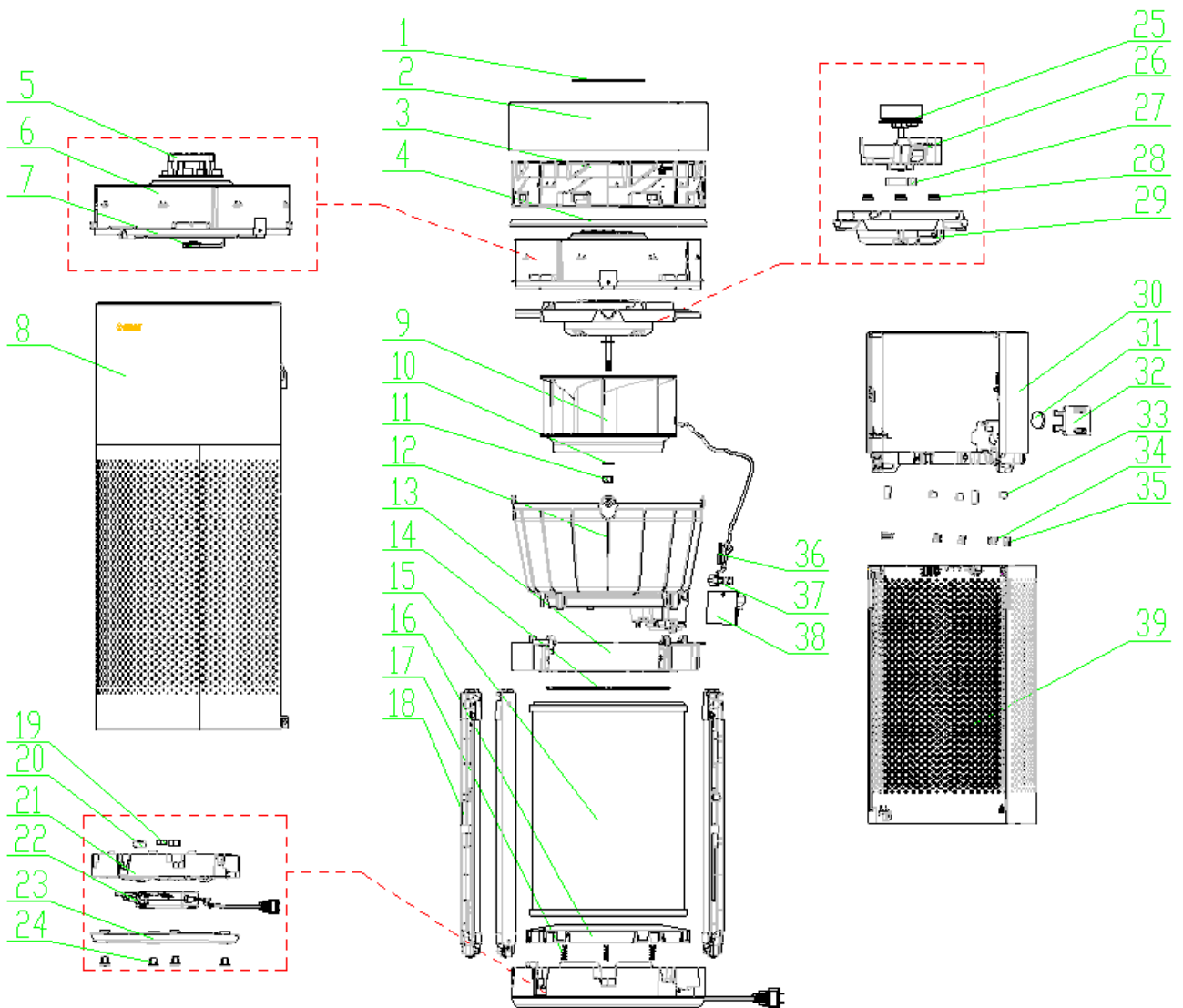


## Others:

No.	Protection name	Entry condition	Error code	Load action	Exit condition
1	motor stalling protection	Non-self-inspection/fast inspection: when turning on the fan, if motor stalling protection lasts for 15S $\leq$ 150rpm, the fan will stop operation for 5s (turn off PWM); 5S later, normal operation will be resumed. If rotation speed is still $\leq$ 150rpm after 15s, it will enter into motor stalling protection. Self-inspection/fast inspection: refer to the test section.	L3	Turn off all loads	Press ON/OFF button
2	Malfunction of dust sensor	Under working status, the sensor at the air inlet is not connected well	“E5” is displayed during self-inspection/fast inspection period	Turn off all loads	Power off
			Under normal circumstances, “—” is displayed instead of PM2.5.	Not affect loads	Detected that the sensor resumed automatically
3	Communication of touch chip failed	Communication of touch chip failed for consecutive 6s	H8	Turn off all loads	Communication of touch chip succeeded

## 9. Exploded View and Parts' List

### 9.1 Exploded View



## 9.2 Parts' List (Below data is subject to change without notice.)

39	Decorative Board	格力白
38	Dust Sensor	PPD42NJ
37	Inching Switch	
36	Pinboard	KJ700G-A01
35	Fixed slice	(二)
34	Fixed slice	(一)
33	Magnet	
32	Sensor Cover	格力白
31	Sponge	旋盖
30	Front Panel(Rear)	格力白
29	Motor Support	黑色
28	Shock Pad	
27	Shock Pad(2)	
26	fixed support (Fan motor)	黑色
25	Brushless DC Motor	SF40-1A-ZL
24	Rubber Grommet	深灰
23	Bottom cover	格力白
22	Power Adapter	GR48-24V2.0A
21	Base Frame	黑色
20	Magnetic Ring	I 28X16X13
19	Connector	YF-2
18	Detecting Plate	黑色
17	Spring	
16	Tray	黑色
15	High efficiency filter(composites)	
14	Rear Grill	进风
13	Supporter	黑色
12	Air Scroll	黑色
11	Nut M8	
10	Block gasket	
9	Centrifugal Fan	黑色
8	Front Panel	格力白
7	Detecting Plate	W04T
6	Supporter	显示板（黑色）
5	Display Board	KJ350G-A01-B
4	Decorative Circle	喷涂香槟金+罩 UV
3	Air Outlet Grill	格力白
2	Air Outlet Frame	格力白
1	Front Panel(Display)	
No.	English name	Remark

## 10. Removal Procedure

No	Disassembly procedure	Disassembly schematic diagram
1	<p>Remove high-efficiency filter: Open the decorative board sub-assy, hold the handle of high-efficiency filter, slightly rotate the filter left and right to pull it outwards and then the filter can't be removed.</p>	
2	<p>Remove outer case:</p> <p>2.1: Rotate the air-outlet frame in an anticlockwise direction and then remove it;</p> <p>2.2: Remove anti-rotation screw, rotate the air-outlet frame in an anticlockwise direction to remove it;</p> <p>2.3: Press the holding position at both sides of decorative board with both hands and then remove the decorative board;</p> <p>2.4: Remove the decorative ring from bottom up;</p> <p>2.5: Push the panel upwards and then remove it;</p> <p>2.6: Remove screws at both sides of bottom of panel, push the panel upwards and then remove it;</p>	

Remove air duct sub-assy:

3.1 Remove the filter;

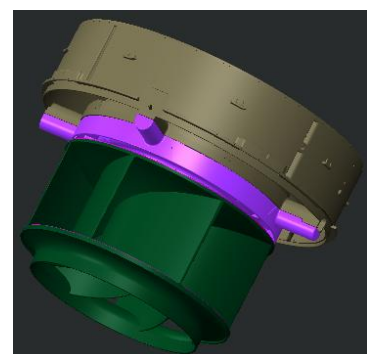
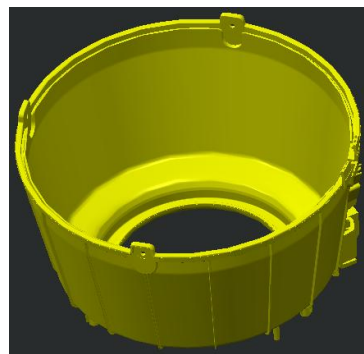
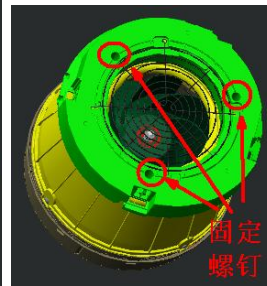
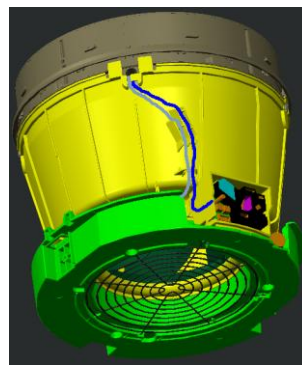
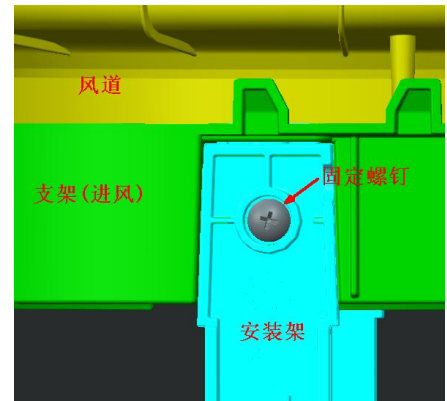
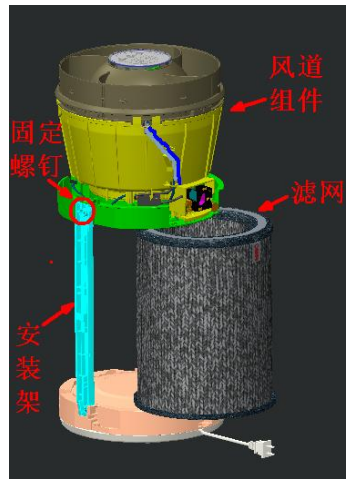
3.2; Remove the screws used for fixing the bracket (air in) and mounting rack;

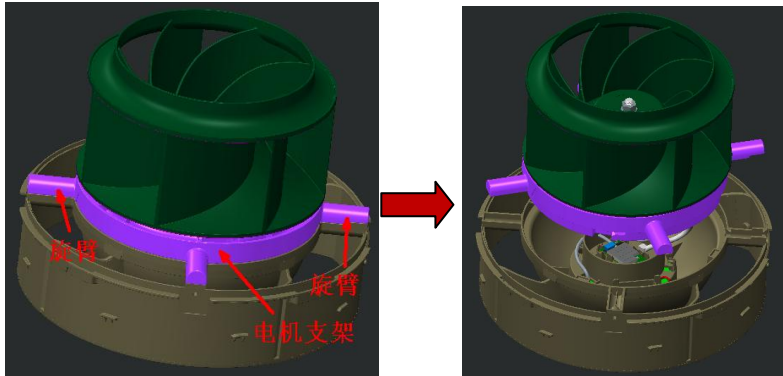
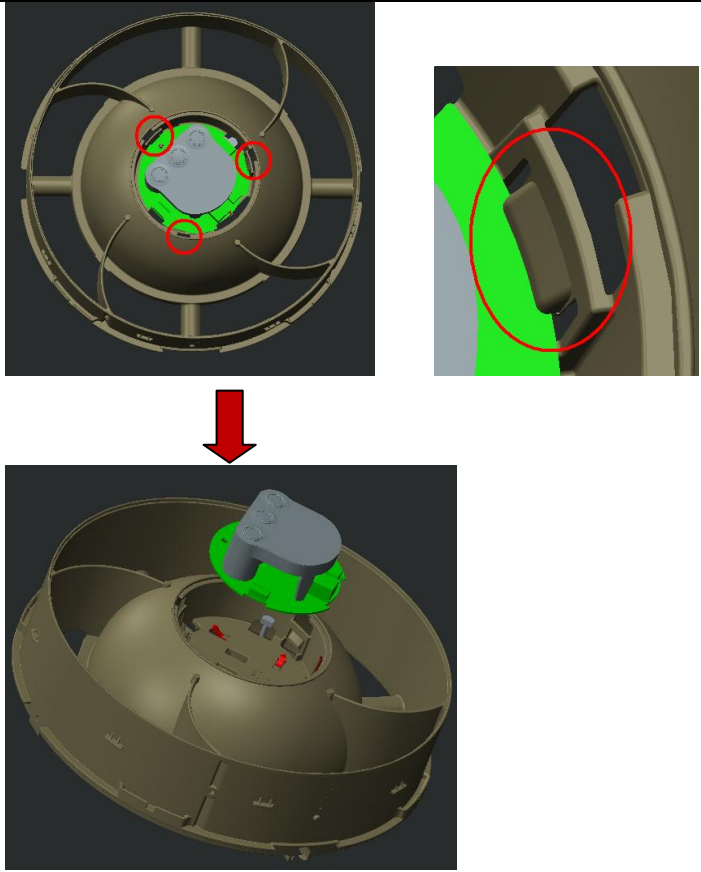
3 3.3 Remove the air duct sub-assy;

3.4 Remove the bracket (air in);

3.5 Remove bracket (display board).

Now the air duct sub-assy has been removed.



<p>4</p>	<p>Remove motor support sub-assy: Hold the swing arm of motor support and rotate it in an counterclockwise direction to separate the motor support from the bracket (display board).</p>	
<p>5</p>	<p>Remove display board: Press three clasps of the bracket (display board) and then the display board can be removed directly. Before moving the display board, pull out the connection wire at the needle stand position.</p>	



**INFORMATION ON CORRECT DISPOSAL OF THE PRODUCT ACCORDING TO EUROPEAN DIRECTIVE 2012/19/EU ON THE DISPOSAL OF ELECTRICAL AND ELECTRONIC WASTE MATERIALS'**

This appliance must not be scrapped with domestic waste at the end of its life cycle. We call your attention to the crucial role played by the consumer in the reuse, recycling and other forms of recovery of such waste.

The dismantled appliance, with its components collected separately, must be delivered to the local waste disposal facility or returned to the dealer free of charge when purchasing a new equivalent appliance.

Sorted disposal of electric and electronic equipment prevents potentially negative consequences on the environment and human health due to improper scrapping, and also allows the constituent materials to be recovered and recycled, with significant savings in terms of energy and resources.

The sorted disposal requirement is indicated by the crossed dustbin symbol affixed to the product.



improve your life

[www.argoclima.com](http://www.argoclima.com)