



improve your life

APOLLO

air conditioner without outdoor unit

ERROR CODES LIST		
Fault name	Fault definition	Code
Jumper cap failure	Hardware failure	C5
Memory chip read and write failure	Hardware failure	EE
Module current protection limit/ reduced frequency	remote control display	En
Module temperature protection limit / reduced frequency	remote control display	EU
System high voltage protection	other faults	E1
Anti-freeze protection	other faults	E2
System low voltage protection	other faults	E3
Exhaust over heat protection	other faults	E4
External AC current protection	other faults	E5
Internal and external machine communication failure	Hardware failure	E6
Mode conflict	Hardware failure	E7
Overload temperature package failure	Hardware failure	FE (not shown)
Anti-freeze protection limit / down-frequency	remote control display	FH
fluorine receiving mode	The operating status immediately displays	Fo ("o" is the lower part of
Fluoride deficiency protection	other faults	F0
Indoor environmental temperature package failure	Hardware failure	F1
Indoor evaporator middle temperature package failure	hardware failure	F2
Outdoor environmental temperature package failure	Hardware failure	F3
Outdoor condenser temperature sensing package failure	Hardware failure	F4
Outdoor exhaust temperature package failure	Hardware failure	F5

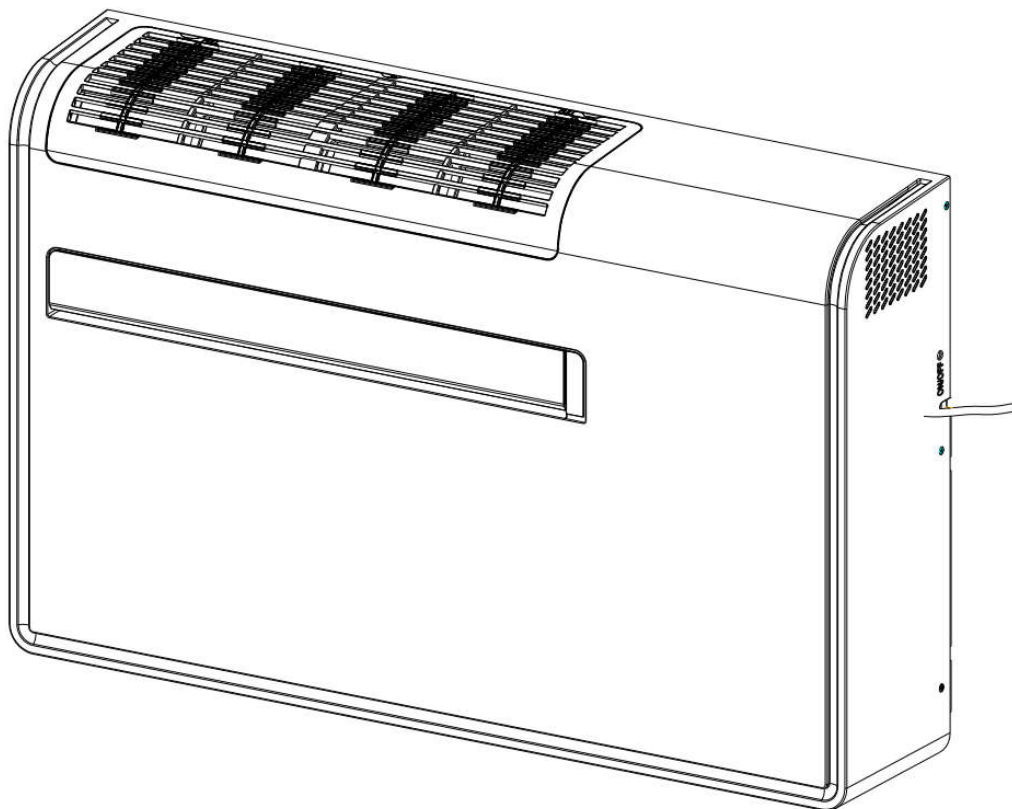
ERROR CODES LIST

Fault name	Fault definition	Code
Overload protection limit / reduced frequency	remote control display	F6
Oil return	30. Operation status (Direct display, other oil return needs remote control)	F7
External machine AC current protection limit / reduced frequency	remote control display	F8
Exhaust protection limit / reduced frequency	remote control display	F9
PFC over current fault	other faults	HC
Compressor demagnetization protection	other faults	HE
Compressor overload protection	other faults	H3
Overload pressure protection	other faults	H4
Module current protection	other faults	H5
Indoor fan failure	Hardware failure	H6
Compressor out of step	other faults	H7
Outdoor fan 2 failure	Hardware failure	LA
Compressor startup failed	other faults	Lc
Indoor and outdoor models do not match	Hardware failure	LP
Outdoor fan 1 failure	Hardware failure	L3
Excessive power protection	other faults	L9
Internal machine undefined	Hardware failure	OE
DC bus voltage is too high protection (external)	other faults	PH
DC bus voltage low protection (external unit)	other faults	PL
Condensate drain protection (float)	Hardware failure	PU
Minimum cooling and heating (capability test code)	The running status is immediately displayed	P0
Nominal cooling and heating (capability test code)	The running status is immediately displayed	P1
Maximum cooling and heating (capability test code)	The running status is immediately displayed	P2
Intermediate cooling and heating (capability test code)	The running status is immediately displayed	P3
Compressor overcurrent peak current is too high	other faults	P5
Module temperature sensing circuit failure	Hardware failure	P7
Module temperature protection	other faults	P8
Compressor phase current detection failure	Hardware failure	U1
Compressor lack / reverse phase protection	other faults	U2
DC bus voltage drop fault	other faults	U3
Current detection failure	Hardware failure	U5
Four-way valve switch abnormal	Hardware failure	U7
Zero crossing signal abnormal	Hardware failure	U8



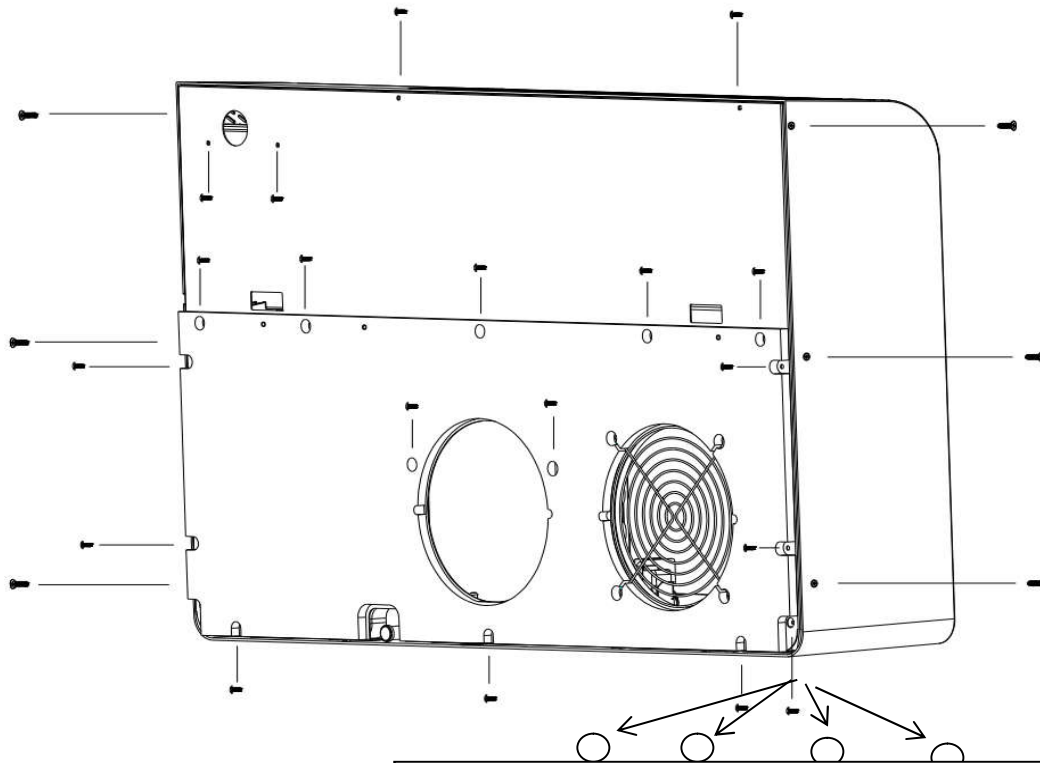
APOLLO

air conditioner without outdoor unit
COMPONENTS DISASSEMBLY MANUAL

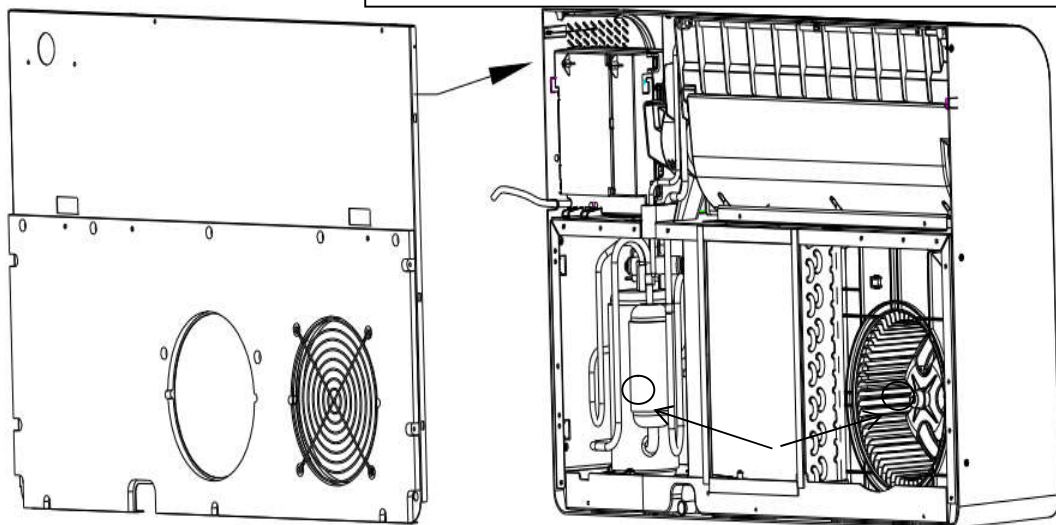


1. Removing the rear panel

1. Remove 6 screws on the left and right sides of the front panel, then remove the screws fixed on the rear panel.
2. Manually pull the rear panel outward to make sure that the top and bottom attachment positions of the front and rear panel are disconnected.



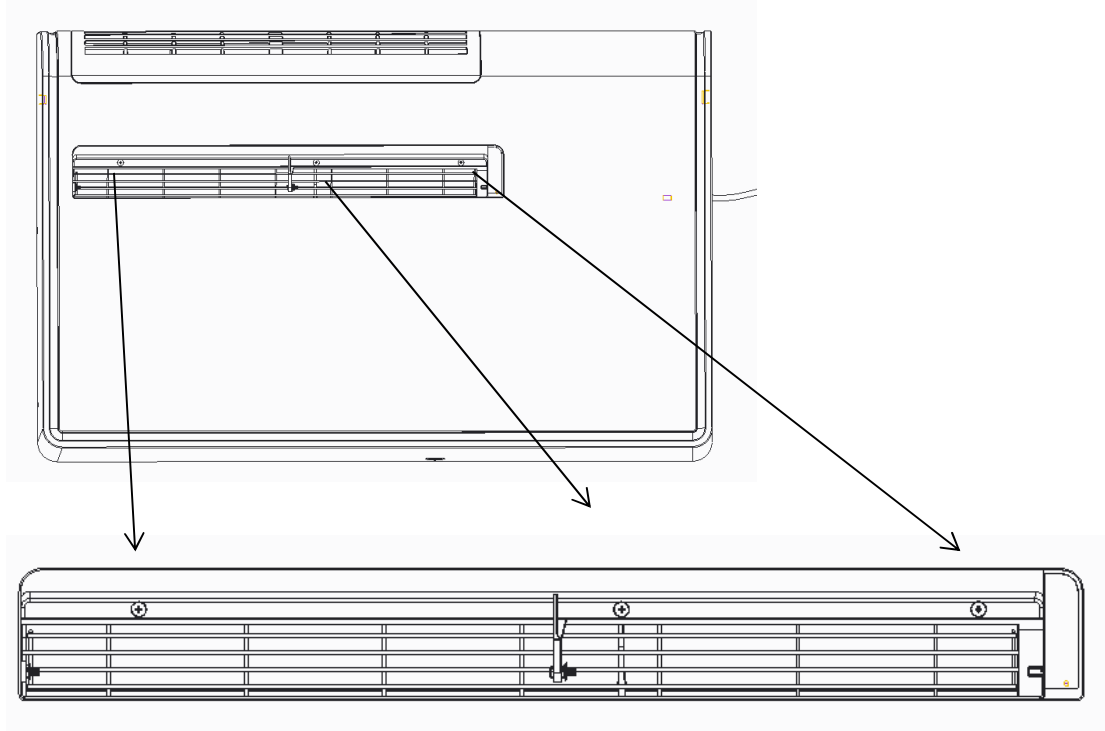
There is a hook in the connection between the front and the rear panel; be careful when removing.



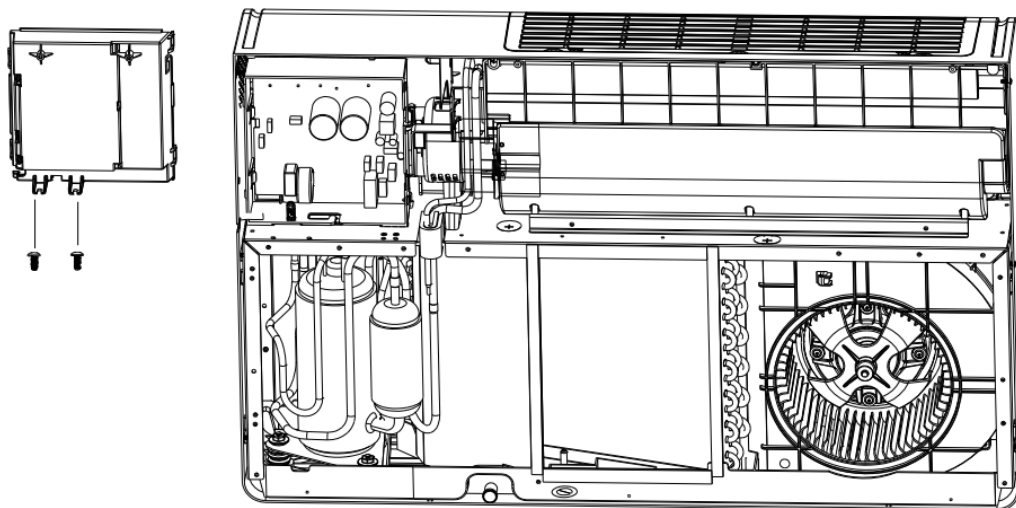
There is a hook in the connection between the front and the rear panel; be careful when removing.

2. Removing the front components

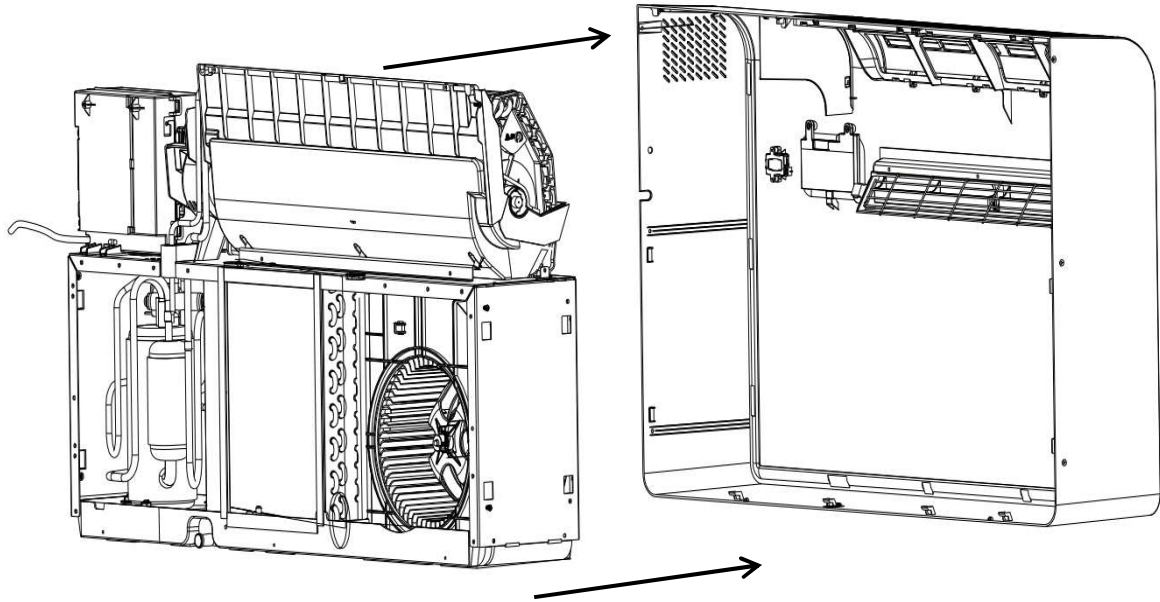
1. After moving the deflector to a horizontal position, remove the three screws



2. Remove the 2 screws of the electrical panel cover, remove the cover and the connection terminals for subsequent disassembly and maintenance.

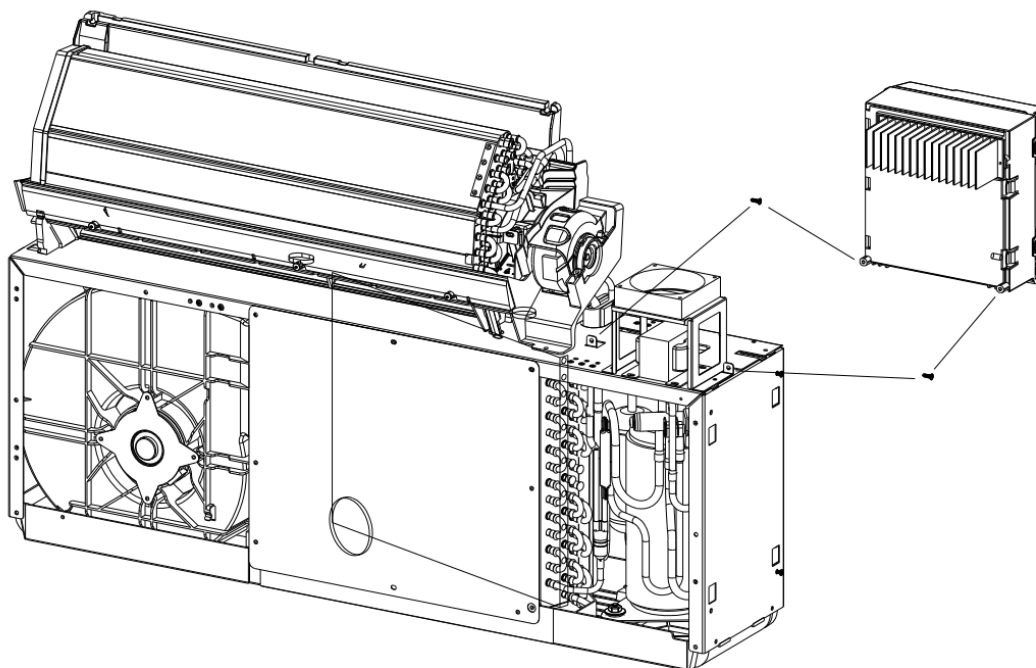


3. Lift the base slightly and pull the front outwards. Make sure that the joints between the left and right sides of the front and the left and right sides of the machine are blocked and that the lower part of the front and the base are blocked. Make sure it is disengaged, move the front case horizontally and be careful to loosen the connection cable when removing it.

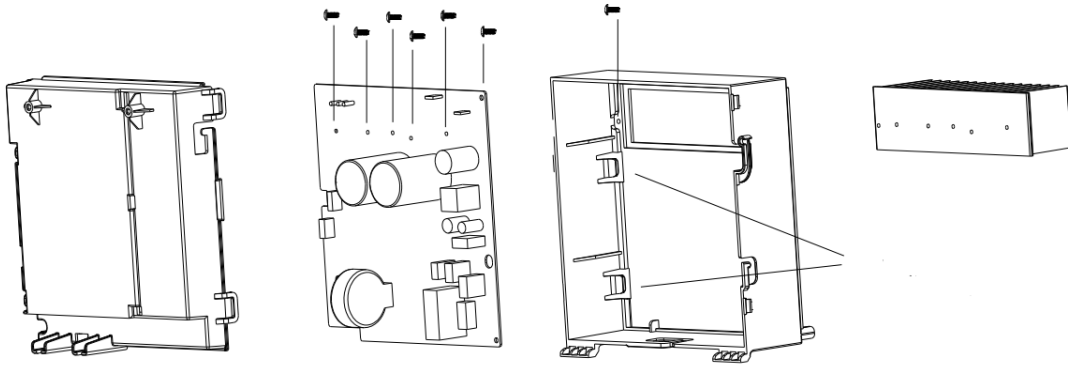


3. Disassembly of the electrical panel and main board

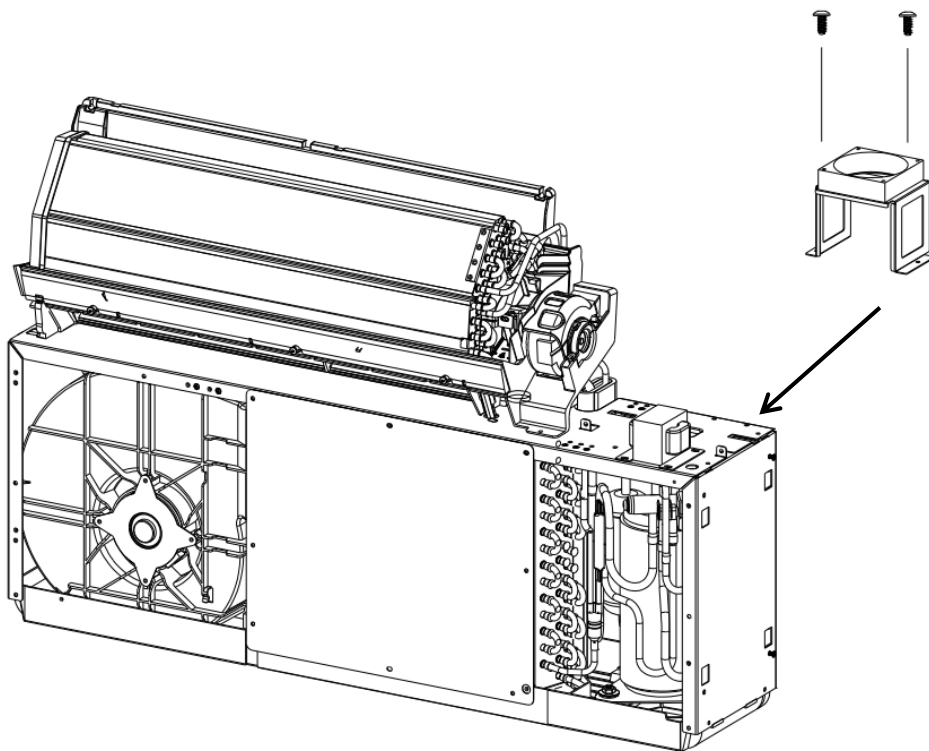
1. Remove the 2 screws that fix the electrical box



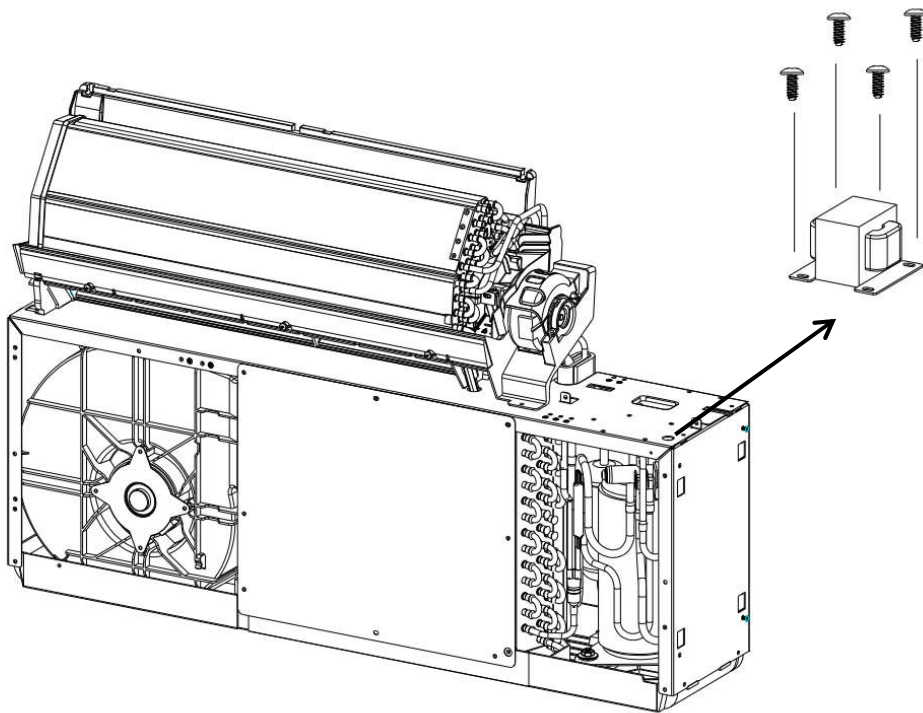
2. Remove the screws that fix the main control board. Remove the screws that fix the PCB heat sink and the electrical panel.



3. Remove the 2 screws that fix the cooling fan bracket.

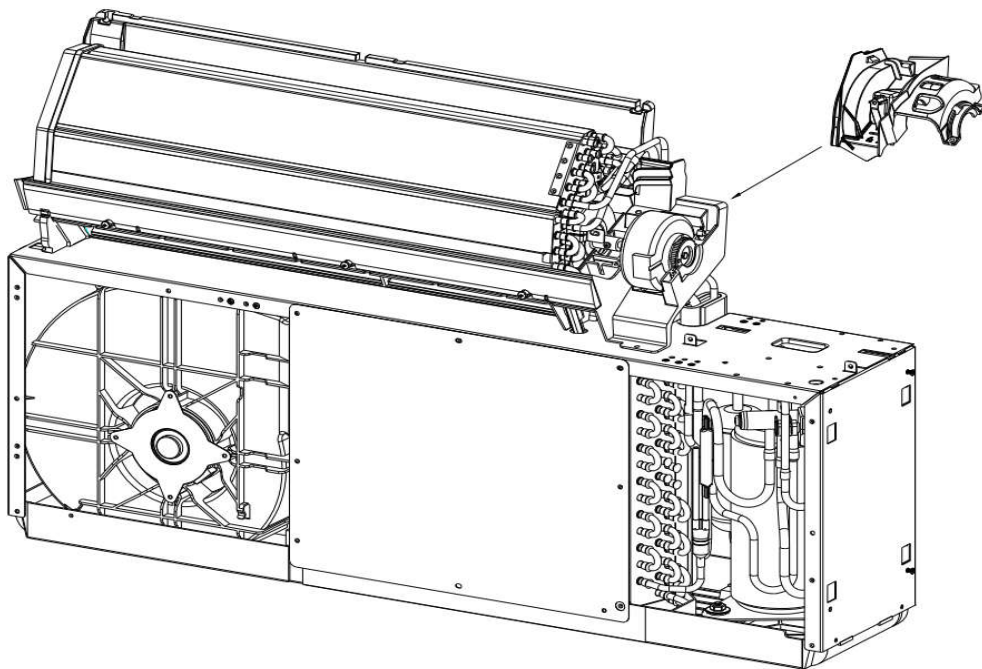
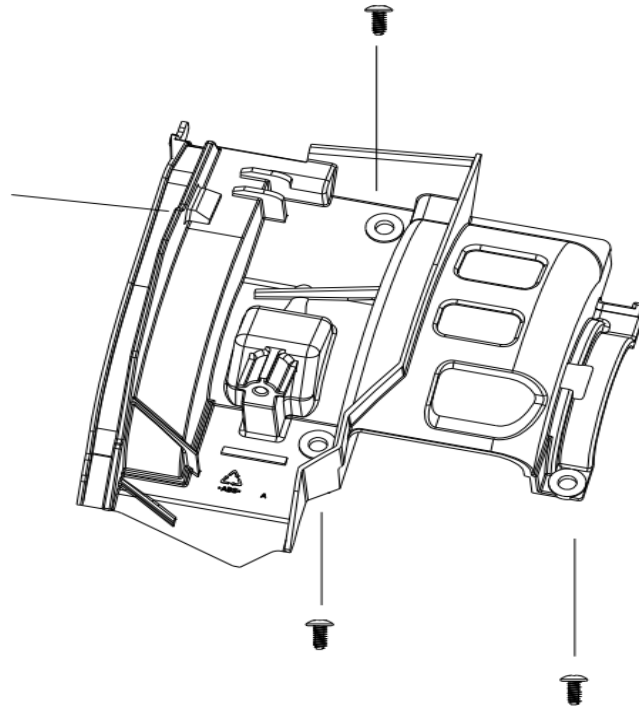


4. Remove the screws that fix the reactor and remove it.

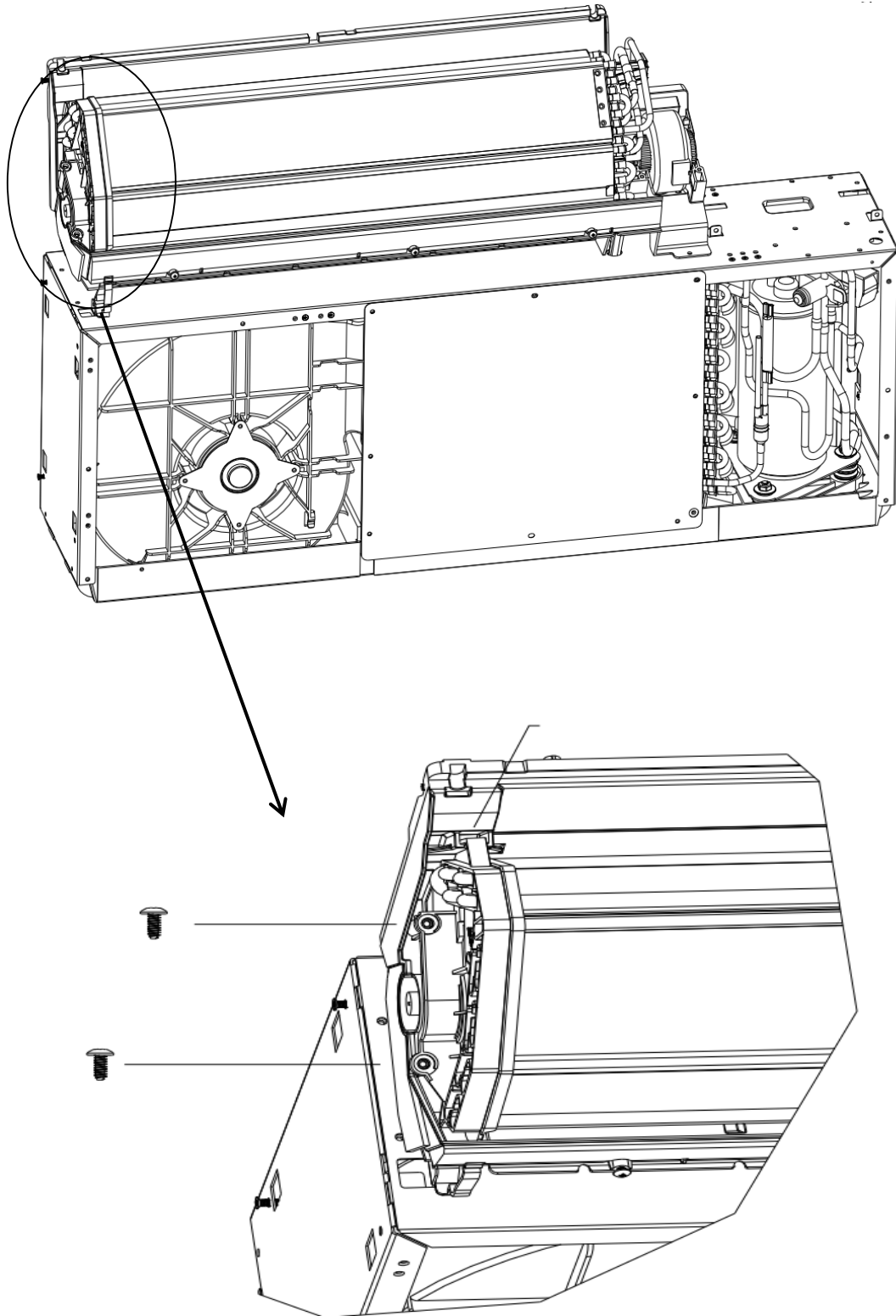


4. Disassembly of the evaporator duct assembly

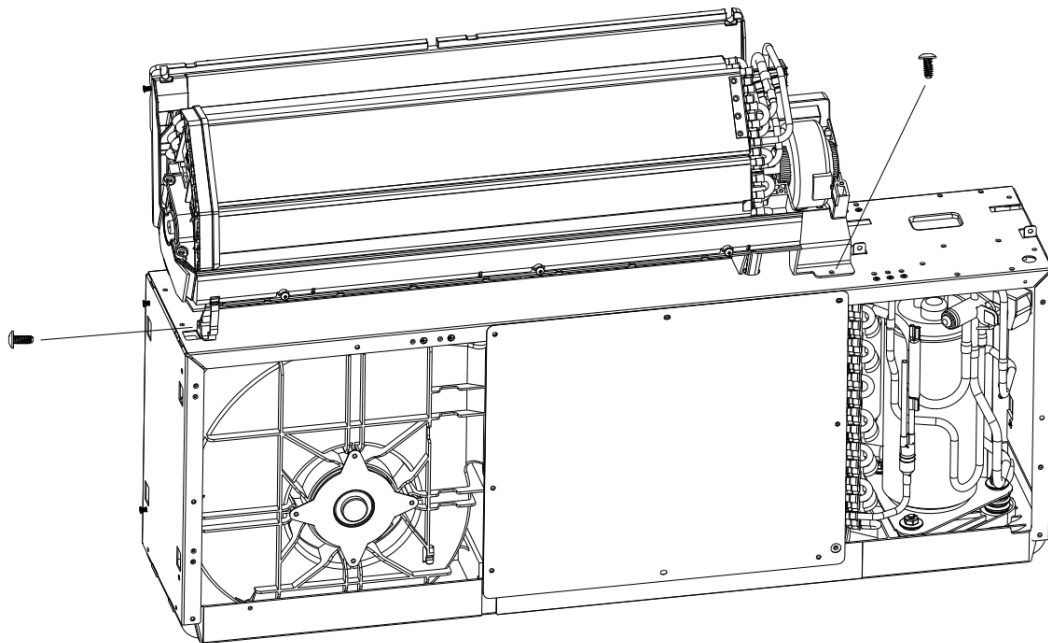
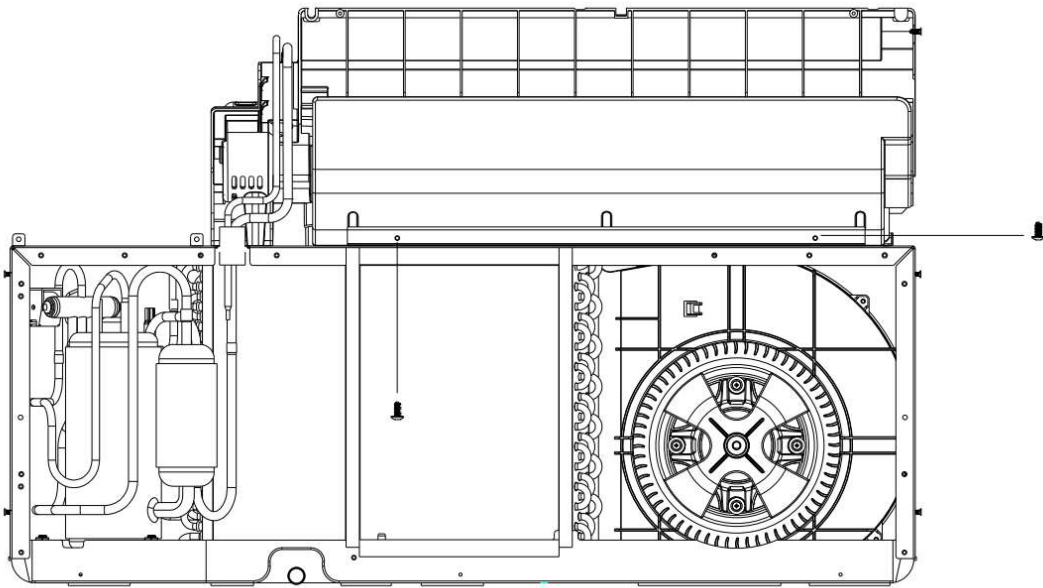
1. Remove the screws that fix the motor lock plate and pull it out.



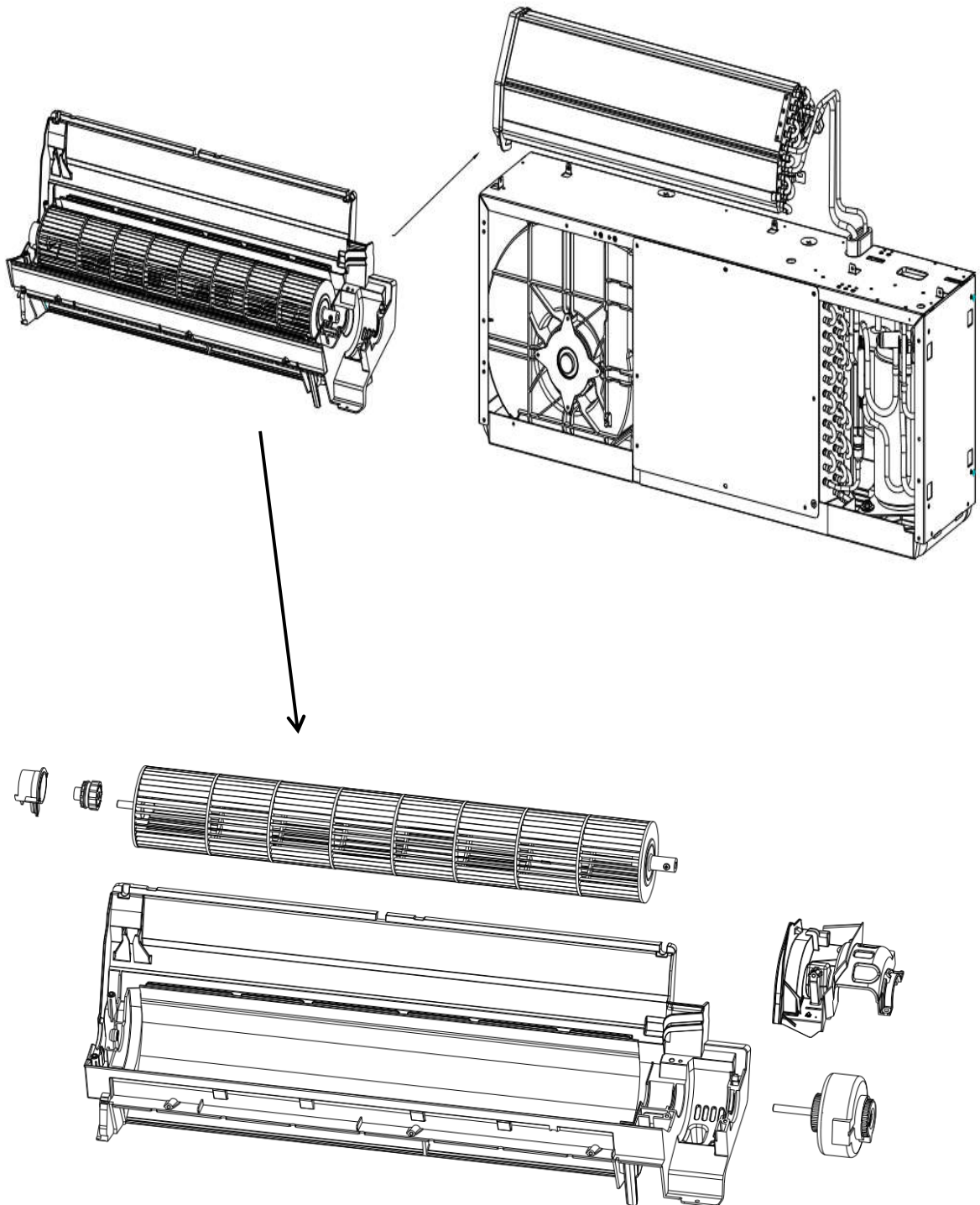
2. Remove the screws that fix the connection between the evaporator and the air duct assembly.



3. Remove the 4 screws on the front and rear sides of the base of the internal machine connected to the central support

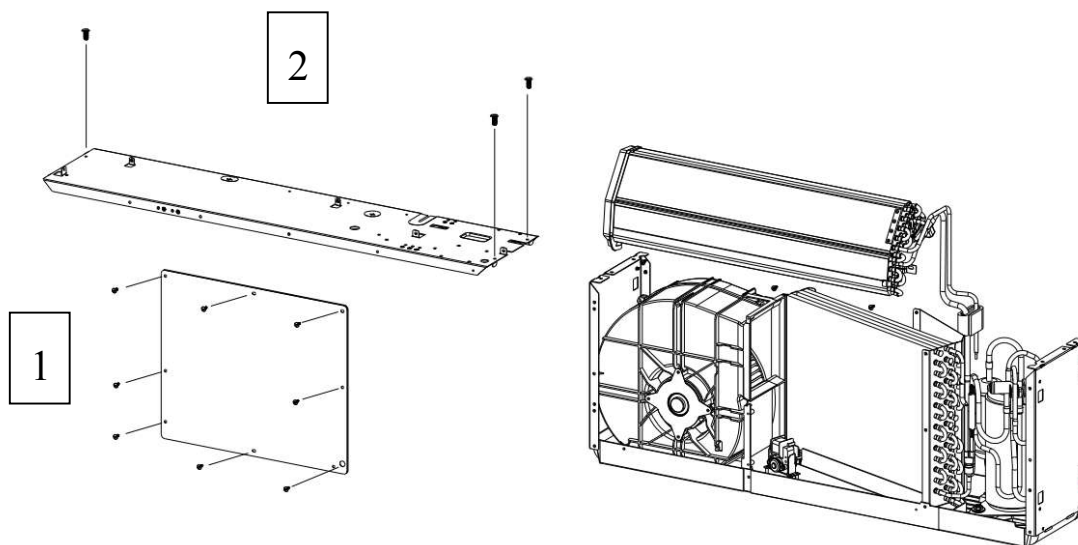


4. After lifting the evaporator assembly, move the base unit of the indoor unit out of the tilt.

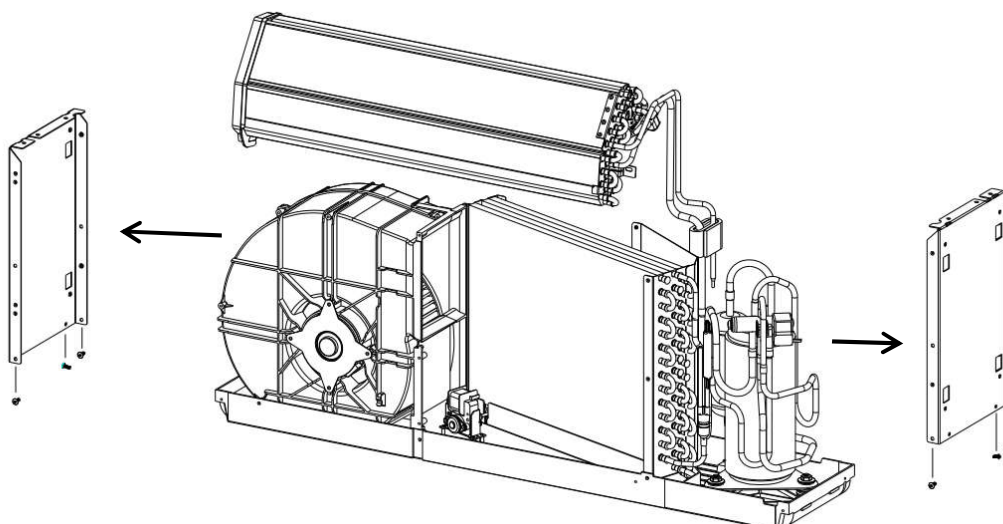


5. Internal division of components

1. Remove the screws that connect the front plate (1) and the components of the indoor unit.
2. Remove the screws that connect the center support cross plate (2) and the center support side plate.
3. Lift the evaporator assembly and move it horizontally out of the central partition.

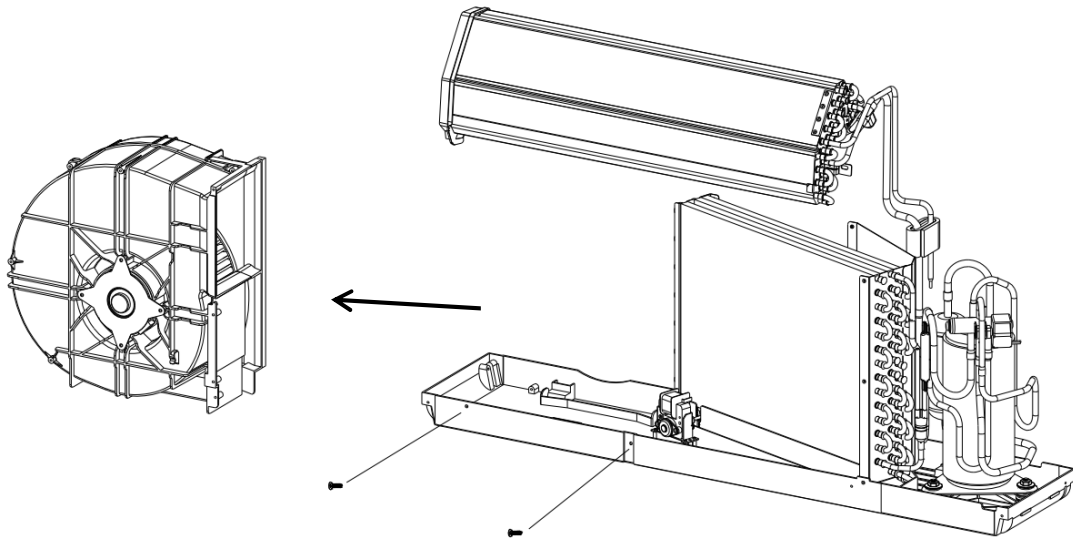


4. Remove the screws that connect the base and side plates on both sides.

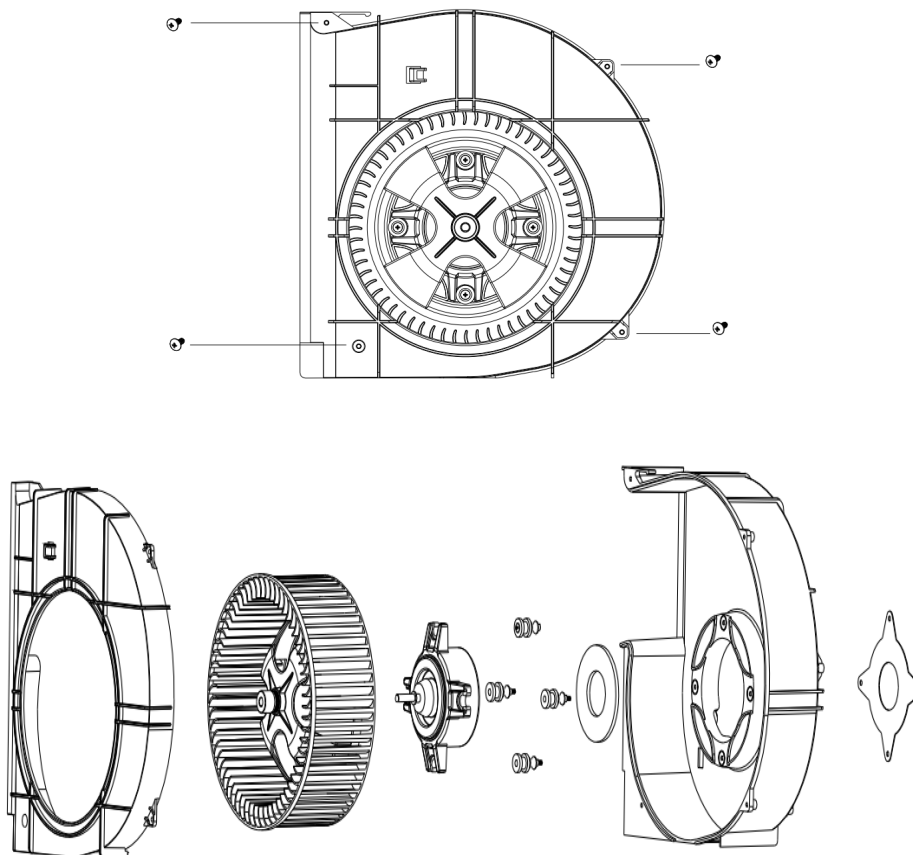


6. Dismantling the components of the exhaust pipe

1. Remove the screws that fix the fan assembly and remove it.



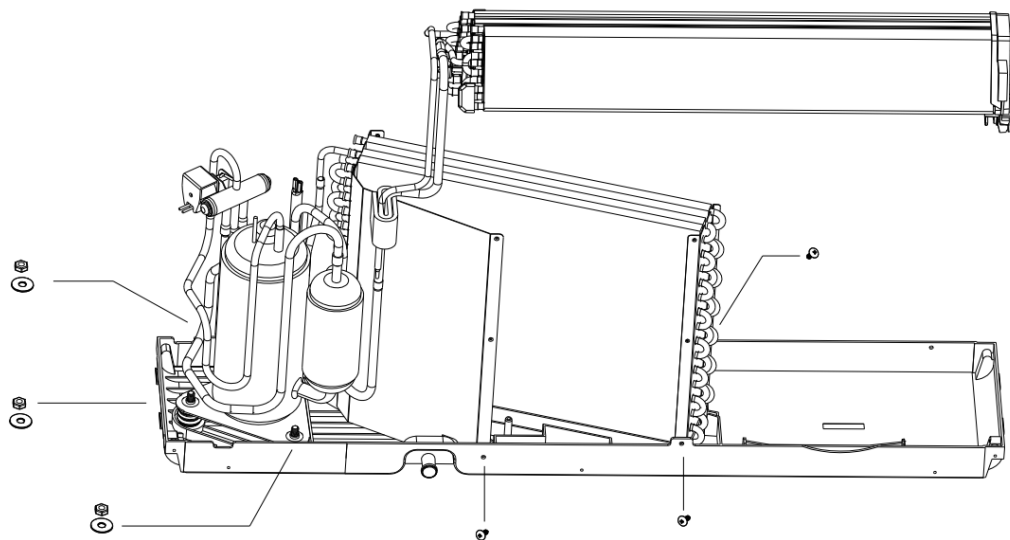
2. Remove the 4 screws on the outside of the volute, loosen the nut fixed on the motor shaft, remove the nut and extract the fan with both hands, then remove the other 4 screws that secure the motor. Remove the fan motor



7. Removing the refrigerant circuit

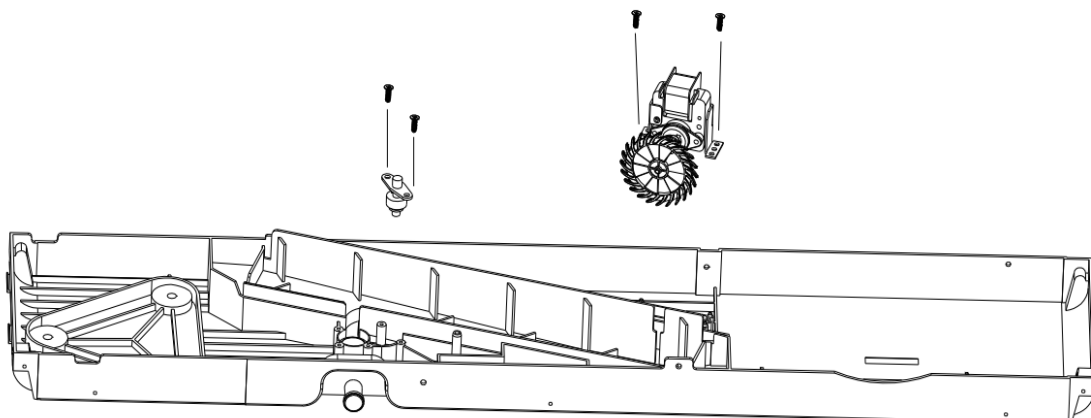
Remove the three screws that connect the end plates on both sides of the condenser and the base.

1. Unscrew the three nuts that fix the compressor feet respectively, remove the nuts and gaskets and lift the refrigerant circuit consisting of the compressor, condenser and evaporator to disengage from the frame assembly (note that the protection pipe must not be broken)

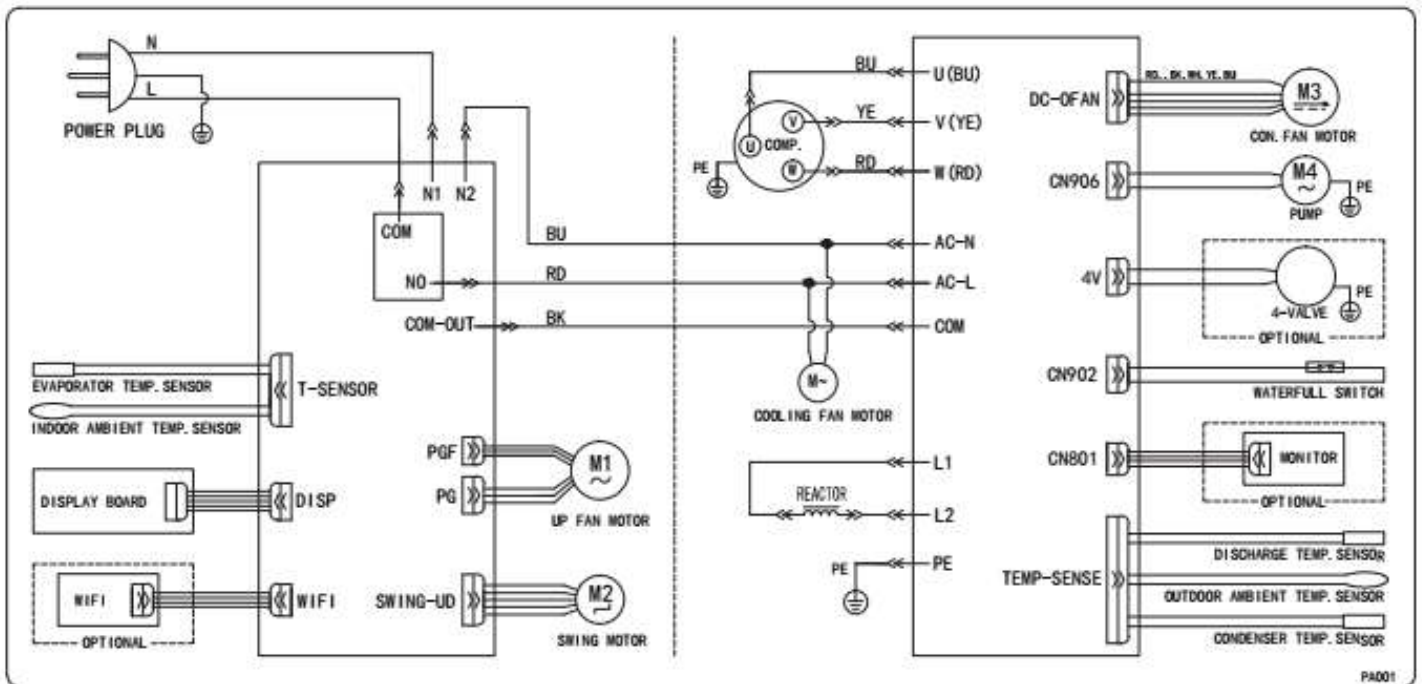


8. Removing the water pump switch and motor

1. Remove the 2 screws that fix the switch and the 2 screws that fix the water pump motor.



9. Eletrical wiring diagram



Colour of the wires

BK	Black
BN	Brown
BU	Blue
GN	Green
RD	Red
WT	White
YE	Yellow