

# HIGH WALL - single split air conditioners

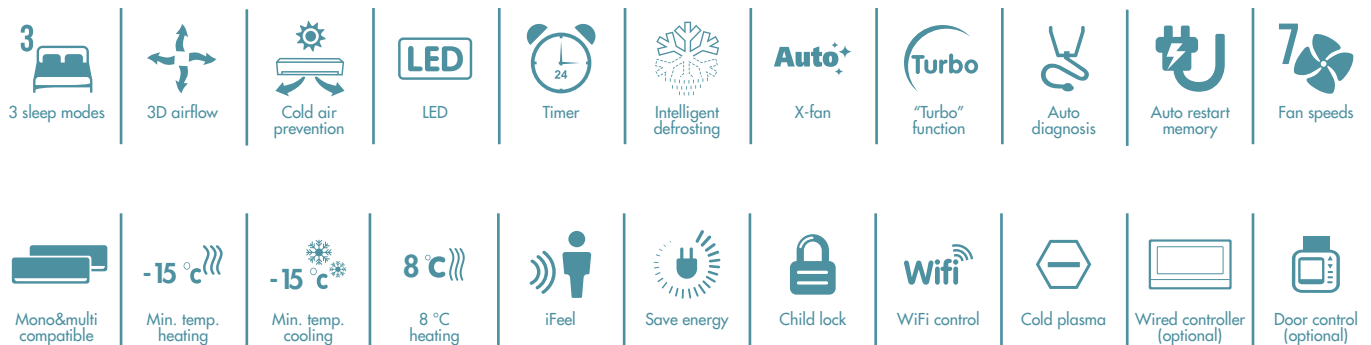
## MAIN FEATURES



(Standard)  
Infrared remote controller



(Optional)  
Wired controller with weekly timer



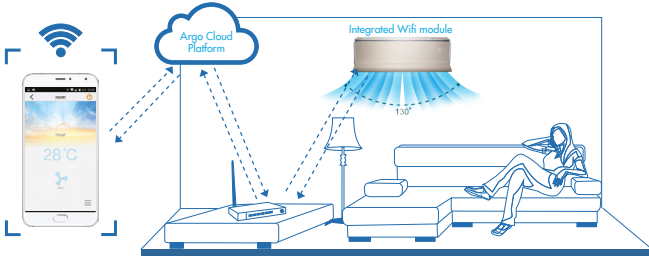
**A<sup>++</sup>** Cooling

**A<sup>+</sup>** Heating (average season)

**A<sup>+++</sup>** Heating (warmer season)

Model		Code	Nominal (min.-max.) cooling capacity (kW)	Nominal (min.-max.) heating capacity (kW)
Indoor unit model	X3I ECO PLUS 27 HL WF	398000817	2.70 (0.80-3.80)	3.00 (0.90-4.25)
Outdoor unit model	X3I ECO PLUS 27 SH	398000818		
Indoor unit model	X3I ECO PLUS 35 HL WF	398000819	3.51 (0.90-4.40)	3.81 (0.90-4.70)
Outdoor unit model	X3I ECO PLUS 35 SH	398000820		

## LONG DISTANCE WiFi



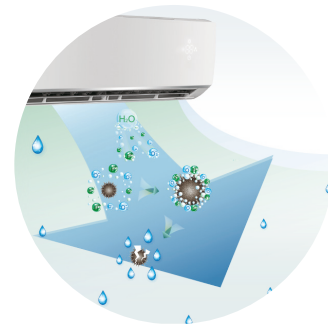
Thanks to the integrated remote WiFi module it is possible to control the units operation via the APP on your smartphone, switch on/off the unit, select the desired mode and temperature, to program your comfort at any time, even when you aren't at home.

## iFEEL FUNCTION



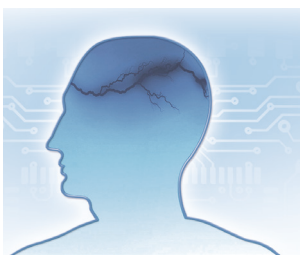
The sensor inside the remote controller perceives the temperature in the environment and transmits the signal to the indoor unit. Thus the indoor unit can adjust air flow volume and temperature to grant the comfort exactly where the remote control is placed.

## AIR PURIFICATION SYSTEM



It grants effective sterilization of air removing over 90% of bacteria. It removes odors. The air quality is improved thanks to the emission of many negative oxygen ions.

## INTELLIGENT AUTO RESTART



After power failure, the unit automatically restarts keeping last function settings. (Memory function)

## SOFT START



The startup energy consumption is reduced to lower not to interfere with the use of the other appliances.

# TECHNICAL DATA

MODEL		X3I ECO PLUS 27		X3I ECO PLUS 35	
Indoor unit model		X3I ECO PLUS 27 HL WF		X3I ECO PLUS 35 HL WF	
Outdoor unit model		X3I ECO PLUS 27 SH		X3I ECO PLUS 35 SH	
		Units	Units	Units	Units
		Cooling	Heating	Cooling	Heating
Nominal (min.-max.) capacity (EN14511)	kW	2.70 (0.80-3.80)	3.00 (0.90-4.25)	3.51 (0.90-4.40)	3.81 (0.90-4.70)
	BTU/h	9200	10240	12000	1300
EER/COP (EN14511)		3.88	4.29	3.65	4.00
Design Load [Pdesign c/Pdesign h (Average/Warmer/Colder)] (EN14825)*	kW	2.7	2.7/3.0/4.0	3.5	3.2/3.3/4.5
Seasonal efficiency ratio [SEER/SCOP (Average/Warmer/Colder)] (EN14825)*		7.5	4.2/5.3/3.4	7.1	4.1/5.2/3.1
Energy efficiency class*		A++	A+/A+++/A	A++	A+/A+++/B
Annual energy consumption [C/H (Average/Warmer/Colder)]*	kWh/annum	126	900/792/2471	173	1093/888/3048
Air flow rate indoor (sh.-h.-mh.-m.-ml.-l.-sl.)	m <sup>3</sup> /h	610-570-540-470-440-420-390		700-650-600-540-480-420-360	
Dehumidification	l/h	0.8		1.4	
Fan speeds (Indoor/Outdoor)	n°	7/2		7/2	
Sound pressure Indoor (sh.-h.-mh.-m.-ml.-l.-sl.)	dB(A)	38-36-34-31-29-27-25		42-38-35-32-29-26-25	
Sound pressure Outdoor (h.)	dB(A)	50		52	
Sound power Indoor (sh.-h.-mh.-m.-ml.-l.-sl.)	dB(A)	54-48-46-43-41-39-37		57-50-47-44-41-38-37	
Sound power Outdoor (h.)	dB(A)	61		63	
Power supply	V/Ph/Hz	220-240V~/1/50		220-240V~/1/50	
Power input nominal (min.-max)	kW	0.695 (0.10-1.30)	0.700 (0.15-1.40)	0.962 (0.22-1.40)	0.953 (0.22-1.55)
Compressor type		Rotary DC Inverter		Rotary DC Inverter	
Refrigerant type		R32		R32	
Refrigerant charge	kg/T.CO <sub>2</sub> eq.	0.53/0.357		0.57/0.384	
Liquid pipe diameter	mm (inch)	6.35 (1/4")		6.35 (1/4")	
Gas pipe diameter	mm (inch)	9.52 (3/8")		9.52 (3/8")	
Min.-max. pipe length with gas standard charge	m	3-5		3-5	
Max. pipe length	m	15		15	
Additional refrigerant charge	g/m	16		16	
Max. height between units (outdoor on top)	m	10		10	
Max. height between units (indoor on top)	m	10		10	
Net dimension Indoor (H./W./D.)	mm	289/845/209		289/845/209	
Net dimension Outdoor (H./W./D.)	mm	555/732/330		555/732/330	
Net weight Indoor/Outdoor	kg	10.5/24.5		11/24.5	

OPERATING RANGE: outdoor temperature

Cooling mode: from -15 °C to +50 °C

Heating mode: from -15 °C to +30 °C

RANGE OF INDOOR TEMPERATURE ADJUSTMENT: from 16 to 30 °C

\*Data declared in compliance with EU Regulation no. 206/2012, as regards to Ecodesign requirements for air conditioners and comfort fans, and EU Regulation no. 626/2011, concerning the energy labelling of air conditioners, and tested according to standard EN14825.