

AS DIRECT-EXPANSION INDOOR UNIT CASSETTE MODEL



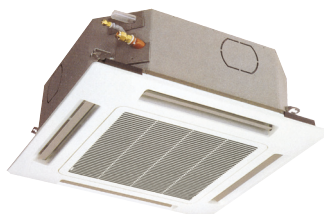
PHASE OUT

Code	Model	Description
387006190	ASIAS8DC	
387006191	ASIBS9DC	
387027154	ASGIDC	Grid with temperature and humidity sensor for ASIAS8DC and ASIBS9DC models
387006192	ASICS10DC	
387027155	ASGI25DC	Grid temperature and humidity sensor for ASICS10DC model
387006193	ASIDS13DC	
387027156	ASGI48DC	Grid temperature and humidity sensor for ASIDS13DC model

Perfect for large to small commercial and public spaces, offices, shops and restaurants. AS is made from insulated metal and consists of a calibrated fan, flaps that can be positioned as desired, a built-in waterspout and air exchange capabilities. The grille is made from high quality plastic



A ASIA S8 DC



C ASIC S11 DC



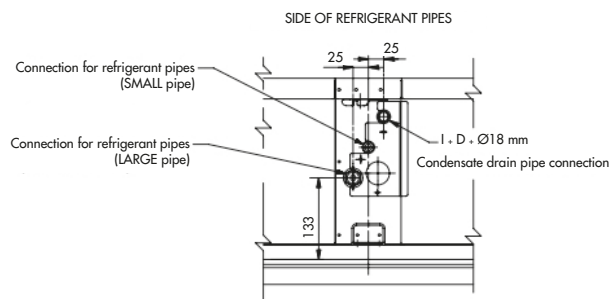
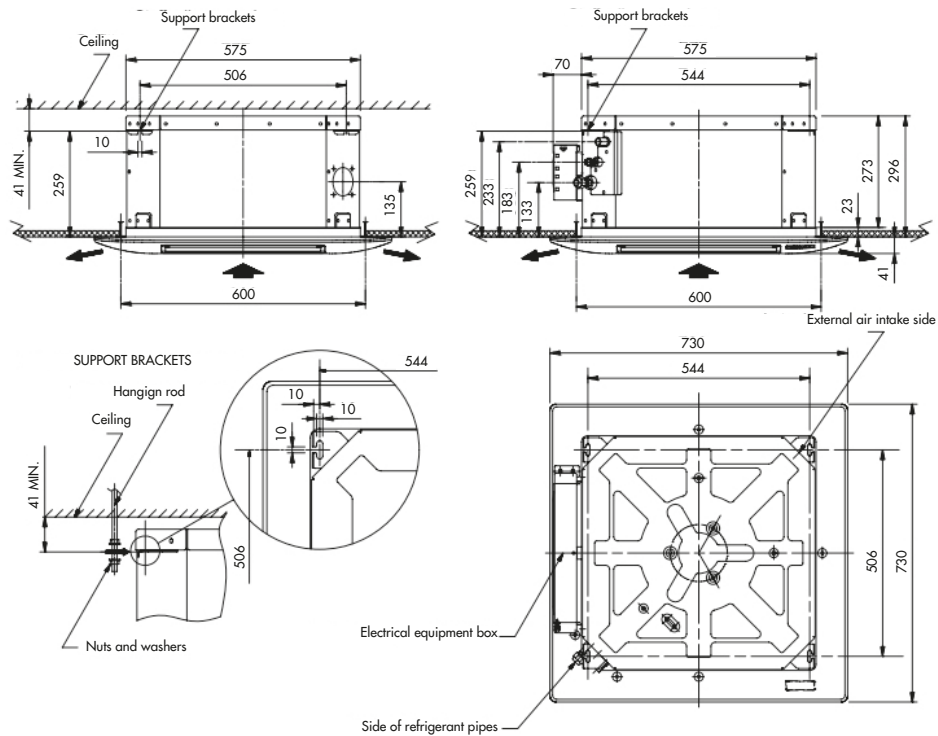
D ASID S13 DC

B ASIB S9 DC

MODEL		ASIAS8DC	ASIBS9DC	ASICS10DC	ASIDS13DC
Heating/Cooling capacity	kW	up to 3,7 / 3,9	up to 5,7 / 7,0	up to 9,0 / 11,0	up to 13,0 / 13,9
Size		A	B	C	D
Air flow rate (sl.-l.-m.-h.)	m ³ /h	200-530-630-750	200-530-630-750	850-1060-1160-1300	1200-1700-1980-2300
Dehumidification	l/h	1,2	2,3	3,6	3,6
Condensation pump static pressure	mm.c.a.	250	250	250	250
Fan speed	n°	3 + auto - by remote control	3 + auto - by remote control	3 + auto - by remote control	3 + auto - by remote control
Sound pressure at 2 m (sl.-l.-m.-h.)	dB(A)	27-43-46-50	27-43-46-50	38-43-44-46	38-44-48-52
Electrical power supply	V/Ph/Hz	230/1/50-60	230/1/50-60	230/1/50-60	230/1/50-60
Type of motor		DC Inverter	DC Inverter	DC Inverter	DC Inverter
Electrical power input	W	8-24-28-36	8-24-28-36	13-20-25-41	22-36-43-64
Liquid pipe diameter	mm (inch)	6,35 (1/4")	6,35 (1/4")	6,35 (1/4")	6,35 (1/4")
Gas pipe diameter	mm (inch)	9,52 (3/8")	12,7 (1/2")	12,7 (1/2")	12,7 (1/2")
Net dimensions (H./W./D.)	mm	296/575/575	296/575/575	310/760/760	338/1050/760
Net dimensions of grille (H./W./D.)	mm	41/730/730	41/730/730	30/860/860	30/1150/860
Net weight	kg	19	20,5	22	27
Remote control supplied		Yes	Yes	Yes	Yes
Room temperature adjustment range	°C	from +10 to +32	from +10 to +32	from +10 to +32	from +10 to +32
Relative humidity sensor		Yes	Yes	Yes	Yes

AS DIRECT-EXPANSION INDOOR UNIT CASSETTE MODEL

ASIAS8DC and ASIBS9DC units



ASICS10DC and ASIDS13DC units

MODEL	L	H	X	Y	Z
ASIC S10	760	310	260	860	500
ASID S13	1050	340	290	1150	750

A Condensation drain pipe hole: external diameter of 32 mm

