



EN

PORTABLE AIR CONDITIONER (LOCAL)

MAXIME PLUS EU



OPERATING INSTRUCTIONS

Read the instructions carefully before operating the appliance or carrying out maintenance work. Observe all the safety instructions; failure to observe the instructions may lead to accidents and/or damage. Store these instructions in a safe place for future reference.



Appliance is filled with flammable gas R290.



Before installing and using the appliance, read the owner manual.



Before installing the appliance, read the installation manual.



Any repairs you need, contact the nearest authorized Service Centre and strictly follow manufacturer's Service Manual.

The Refrigerant R290

- To realize the function of the air conditioner unit, a special refrigerant circulates in the system. The refrigerant is the fluoride R290 = 3 GWP (Global warming potential). This refrigerant is flammable and inodorous. It can lead to explosions under certain conditions, however the flammability of this refrigerant is very low and it can be ignited only by fire.
- Compared to other common refrigerants, R290 is a non-polluting refrigerant with no harm to the ozonosphere and a no effect upon the greenhouse effect. R290 has very good thermodynamic features which lead to a really high energy efficiency. The units therefore need less filling.

Warning:

Do not try to accelerate the defrosting process or to clean the appliance in different ways other than those recommended by the manufacturer. Should repair be necessary, contact your nearest authorized Service Centre. Any repairs carried out by unqualified personnel may be dangerous. The appliance has to be stored in a room that doesn't have any continuously operating ignition sources. (for example: open flames, an operating gas appliance or an operating electric heater.) Do not pierce or burn.

Appliance has to be installed, used and stored in a room with a floor area larger than 15 m². For repairs, strictly follow manufacturer's instructions only for appliances filled with R290 flammable gas. Be aware that refrigerants do not have any odour.



GENERAL OPERATING AND SAFETY INSTRUCTIONS

- This appliance is a local air conditioner designed for domestic use.
- Only use this air-conditioner as described in this manual.
- Ensure that the required voltage and frequency (220-240V/50 Hz) match the available power source.
- Fuse style T3.15AH250V, the electricity passing through the fuse cannot be above 3.15A.
- This appliance can be used by children aged from 8 years and above and people with reduced physical, sensory or mental capabilities or lack of experience and knowledge if they have been given supervision or instruction concerning use of the appliance in a safe way and understand the hazards involved.
- Children shall not play with the appliance.
- Cleaning and user maintenance shall not be made by children without supervision.
- Ensure that the electricity system is able to deliver the operating current required by the air conditioner, in addition to that normally absorbed by other appliances (household appliances, lighting system, etc.). Please refer to the maximum power input data indicated on the air conditioner's data plate.
- Connection to the electricity grid must take place in accordance with current installation standards.
- Ensure that the automatic switches and system protection valves are able to withstand a start-up current of 6A (normally for less than 1 second).
- The system socket must always be fitted with an efficient earth connection.
- Make sure that the plug is fully inserted. Do not use multiple adapters. Do not touch the plug with wet hands. Make sure that the plug is clean.
- Do not use the plug as a means by which to start/stop the air conditioner: use the ON/OFF button on the remote control or on the control panel.

- Do not install the air conditioner in rooms where it may receive water splashes (e.g. laundry rooms).
- Before moving or cleaning the device, ensure that it is unplugged from the socket.
- Do not move the air conditioner while it is operating; first turn the appliance off, check for any condensate build-up and empty it if necessary.
- To turn the appliance off, set the remote control to OFF and remove the plug from the socket. Pull on the plug only. Do not pull the cord.
- **Do not use the appliance if the cord or plug are damaged.** If the power supply wire is damaged, it must be replaced by the manufacturer or its technical assistance service or in any case by a person with similar qualifications, in order to prevent any risk.
- The appliance must be installed in accordance with national wiring regulations.
- Keep the unit away from fire, possible fire sources, inflammable or explosive objects.
- Do not leave the unit unattended while it's operating, turn the unit off and unplug it.
- If drainage hose is used, the ambient temperature mustn't be lower than 0°C. It can cause water leakage to the air conditioner.
- Do not splash or pour water on the air conditioner

PRECAUTION!

- **Do not insert any objects into the air conditioner: this is very dangerous as the fan turns at high speed.**
- **Ensure that air circulates freely around the unit. Do not cover the air intake and delivery grilles with drapes or any other means.**

WARNING!

- The air conditioner must be positioned **at least 50 cm** from the wall or any other obstacles, on a flat and stable surface so as to avoid water leaks.
- The air conditioner is fitted with a system for protecting the compressor from overload. This means that the compressor only starts 3 minutes after its previous stoppage.
- Please wait at least 3 minutes before starting the unit. This helps prevent the compressor from being damaged.

WARNING!

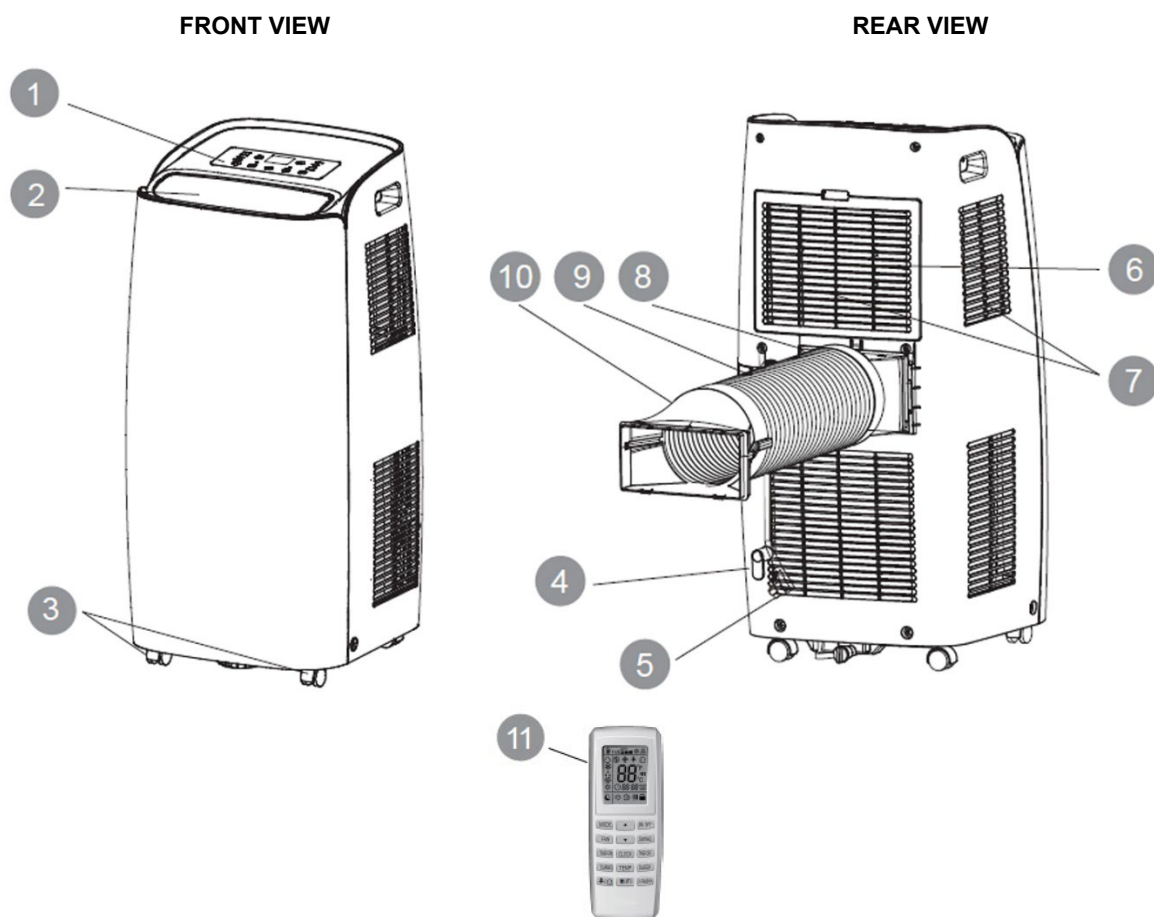
In the event of an anomaly, switch the appliance off and unplug it from the socket. Do not dismantle or attempt to repair or modify the product. In the event of a malfunction, contact the service centre directly.

WARNING!

- Do not expose the air conditioner to direct sunlight, as the colour of the materials may change; moreover, the appliance may overheat causing the protection mechanism to intervene and switch the appliance off.
- Do not use insecticides, oils, detergents or spray paints near the appliance; do not use aggressive chemical detergents to clean the casing: this may damage the finish and colour.
- Close all open windows to maximise air conditioning efficiency.

The manufacturer will not be held liable if safety and accident prevention rules are not observed.

DESCRIPTION OF PARTS



- | | |
|---|--|
| <ul style="list-style-type: none"> 1) CONTROL PANEL AND FUNCTION BUTTONS WITHOUT REMOTE CONTROL 2) VERTICAL FINS AND AIR INTAKE 3) WHEELS 4) CORD CABLE CLAMP 5) POWER CORD 6) AIR FILTER | <ul style="list-style-type: none"> 7) AIR FILTER 8) AIR EXPULSION HOSE 9) JOINT 10) END FITTING FOR WINDOW 11) REMOTE CONTROL |
|---|--|

Min/max operating limits (internal temperature)

Cooling: 16 °C DB / 35 °C DB

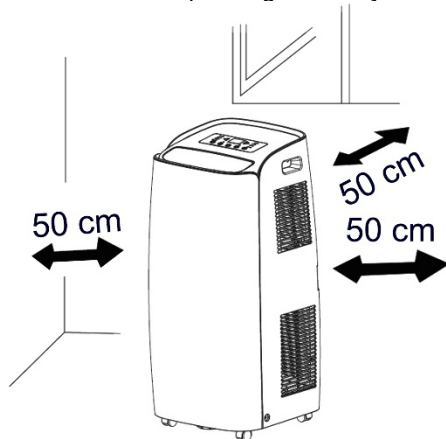
Heating: 10 °C DB / 27 °C DB

Dehumidification: 16 °C DB / 35 °C DB

Cooling mode room temperature adjustment range: 16 °C DB / 30 °C DB

PRE-OPERATING CHECKS AND OPERATIONS

The following space must be maintained to ensure the operating efficiency of the portable air conditioner.



APPLIANCE START-UP

Open the packaging and remove the box from above. Remove the product and the other elements supplied (illustrated in the box below).

LCD remote control



Type AAA batteries for the remote control



Round fitting for window (1) to be positioned between the end of the tube and the end fitting for the window (in the packaging is the same fitting mounted on the porthole kit (A).



End fitting for window, supplied into 2 parts to be joined with 2 tabs that fit together. (2)



Flat fitting for positioning between the air discharge outlet and the hose



Hose



Drain hose



Cord winder



Drainage pipe



Screws

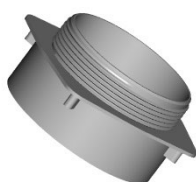
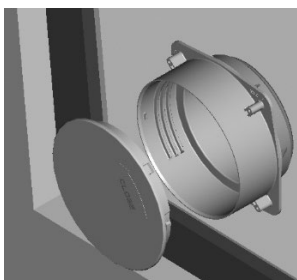


Window unit kit (3 pcs)
(A+B+C)

Round fitting for window unit, to be positioned between the end of the tube and the window unit (A)

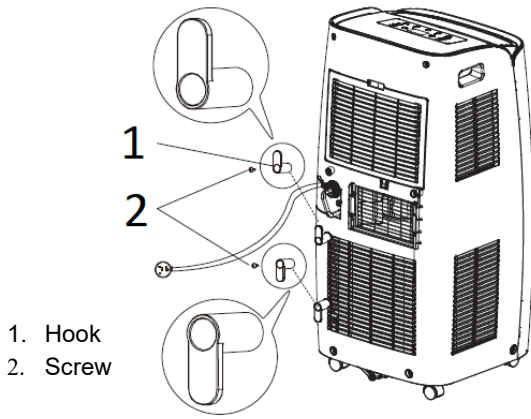
Window unit (B)

Cap (C)

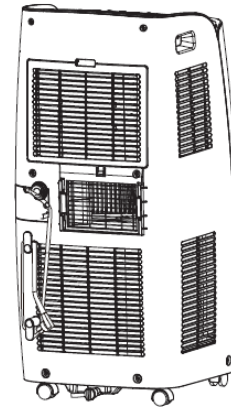


Position the product vertically on a flat and stable surface, as close as possible to a window and at least 50 cm from walls or other nearby obstacles.

INSTALLATION OF CORD WINDER HOOKS



Install the cord winder hooks to the back of the unit using the screws, as shown in the figure.
The hooks must be positioned facing upwards and downwards.

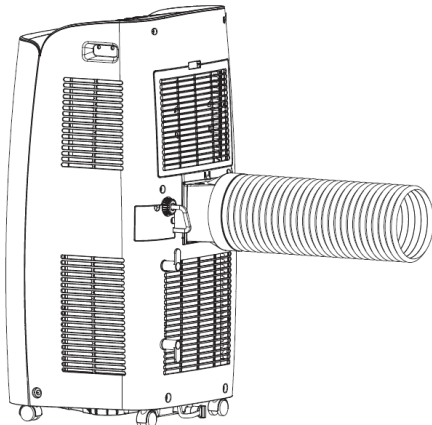


When the appliance is not being used, wind the power cord around the hooks.
Wind the cord around the hook.

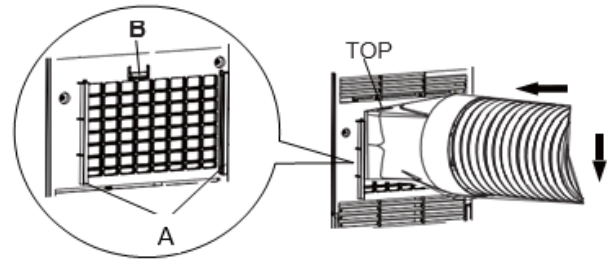
USE WITH END FITTING FOR WINDOW

Connect the flat fitting to the hose, extend the hose as far as necessary for reaching the outside and it connect to the back of the air conditioner.

Next, slide the flat fitting downwards into the grooves (A) and secure it with the hook (B).
The upward-facing side of the flat fitting is marked "TOP".

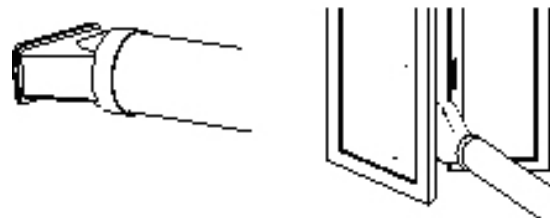


Connect the round window fitting (1) to the end of the hose then the end fitting for the window (2), previously obtained by joining parts A and B



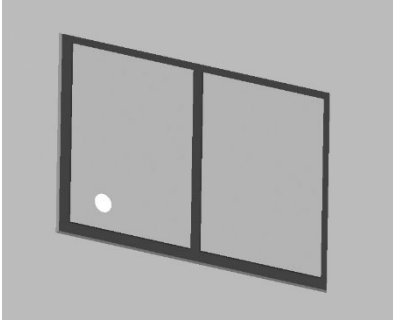
Open the windows and lock one of the two leaves with the handle.

Place the end fitting against the fixed leaf of the window, and draw the other leaf towards it.

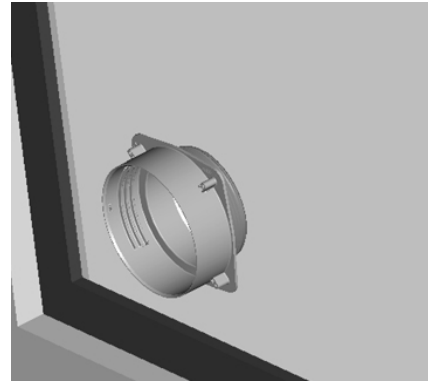


USE WITH WINDOW UNIT KIT

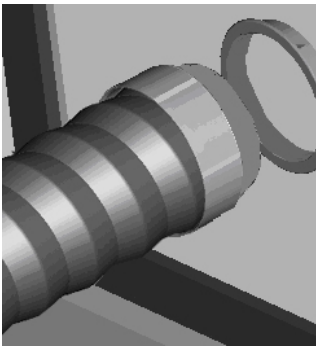
1. To make the hole in the glass it is advisable to take the porthole kit accessory to the glazier.



2. Insert the window unit into the window.



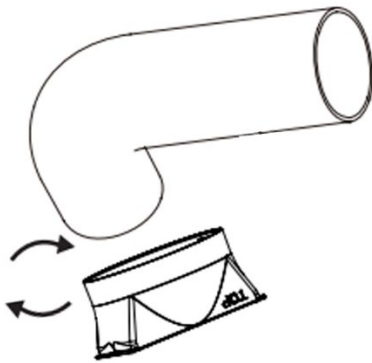
3. Insert the round fitting into the retractable flexible pipe and insert the latter with its round fitting into the window unit without the plug.



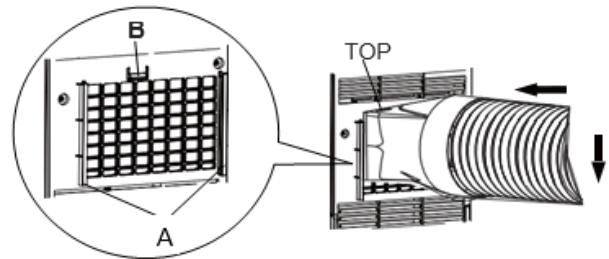
4. Insert the round fitting onto the flexible pipe.



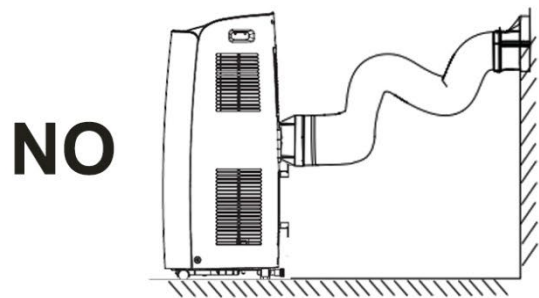
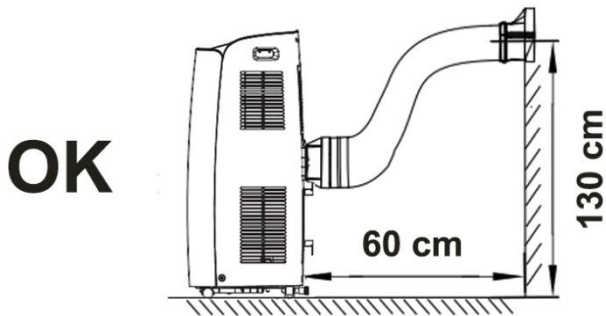
5. Insert the flat fitting onto the hose.



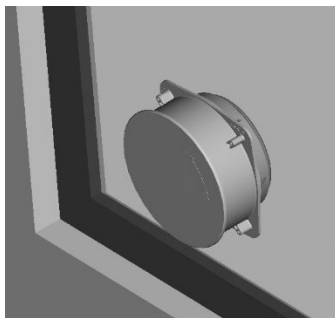
6. Slide the flat fitting downwards into the grooves (A) and secure it with the hook (B). The upward-facing side of the flat fitting is marked "TOP".



7. The outlet must be between 40 cm and 130 cm above the ground. Avoid tight curves or bends in the flexible hose.



8. If the air conditioner is not used for prolonged periods, disconnect the pipe and plug the window unit.

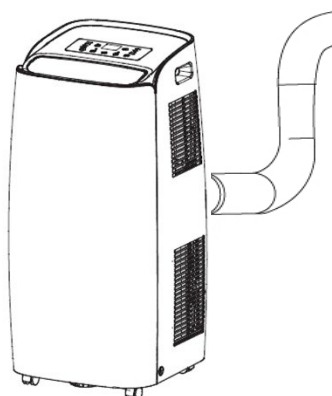


Connect the power cord to a suitable electric socket (220–240 V). Insert the supplied batteries into the remote control and make sure the poles match. Select the desired operating mode from the remote control.

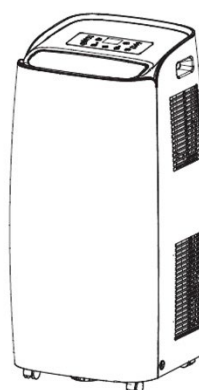
HOW TO USE THE APPLIANCE

This appliance can be used for cooling, heating, dehumidifying and ventilating.

When switching between modes, the fan continues to rotate but the compressor stops: the compressor will start after 3 minutes. This delay protects the compressor from potential damage.



Cooling, Heating, Fan



Dehumidifying

THE DISCHARGE TUBE MUST ALWAYS BE CONNECTED to the appliance: the only exception is when the appliance is used solely for dehumidification, in which case it is advisable to let the appliance discharge directly into the environment for maximum efficiency (consult the "Dehumidification Mode" paragraph).

Regularly clean the air filters beneath the easily removable rear grille to keep the air conditioner working efficiently.

OPERATING MODES

The first time the air conditioner is switched on, it will operate in ventilation mode with automatic flap oscillation.

1. COOLING MODE (COOL)

- The first time it is turned on, the air conditioner operates in ventilation
- Press the MODE button to select Cool mode
- The "Cool" LED on the control panel will turn on.
- The temperature can be adjusted to between 16 °C and 30 °C.
- In this mode, whenever the ON/OFF button is pressed, the unit switches off, the appliance saves the temperature setting and, when switched back on again, retains this setting.
- In this mode, the fan speed can be adjusted and the Timer and SLEEP functions can be set.
- For more silent operation, run the fan at low speed.
- Under cooling mode, when the set point is reached, turns off, and internal fan motor(the upper one) keeps operation continuously at set fan speed; the external fan motor(the lower one)continues the operation at low fan speed

2. HEATING MODE (HEAT)

- Press the MODE key to select the HEAT mode.
- The "Heat" LED on the control panel will turn on.
- The temperature can be adjusted to between 16 °C and 30 °C.
- In this mode, each time the ON/OFF button is pressed the unit switches off, the appliance saves the temperature setting and retains this setting when it is switched on again.

- In this mode, the fan speed can be adjusted and the Timer and SLEEP functions can be set.
- For more silent operation, run the fan at low speed.
- During heating mode It may be advisable to arrange the continuous drainage of condensate (see next chapter CONDENSATE ELIMINATION METHOD)
- Under heating mode, when the set point is reached, turn off, and internal fan motor(the upper one) keeps operation for 10s and then stop; the external fan motor(the lower one) continues the operation at low fan speed

3. DEHUMIDIFICATION MODE (DRY)

- Press the MODE button to select Dry.
- The "Dry" LED on the control panel lights up
- The temperature is controlled by the PCB and cannot be regulated.
- In this mode, whenever the ON/OFF button is pressed, the unit switches off, the appliance saves the settings and, when switched back on again, retains them.
- The fan speed is set to low and cannot be adjusted.

NOTE

The air conditioner does not cool the room when it is used as a dehumidifier.

When the appliance is used as a dehumidifier, the flexible hose must not be connected.

For maximum dehumidification efficiency, leave the rear discharge attachment free to discharge directly into the environment.

The dehumidification mode is recommended during autumn and winter.

If used in summer, it is best to leave the flexible hose attached so that the hot air can be discharged towards the outside rather than into the room.

During dehumidification, continuous drainage of condensate should be implemented (consult the next chapter, "CONDENSATE ELIMINATION").

4. VENTILATION MODE (FAN ONLY)

- Press the MODE button to select Fan and wait until the relative icon appears.
- In this mode, the fan speed can be adjusted.
- The temperature cannot be adjusted.

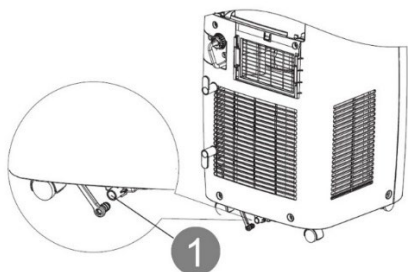
HOW TO ELIMINATE CONDENSATE

In cooling mode this appliance automatically vaporizes the condensate; only in particular climatic conditions, in which the humidity rate of the air is very high, can it happen that water is deposited inside the internal tank. In heating it is normal for water to be collected in the internal tank. **When the internal tank is full, the air conditioner will emit 8 beeps and the display will show the message "H8", signaling the filling and blocking the operation of the device.** In Heating, it is possible, if desired, to arrange the continuous drainage of the condensate from the lower hole, taking care to position the unit on a small rise in order to ensure the necessary slope to the drainage pipe.

Cooling and Heating

When the unit operates in the cooling and heating mode, ensure that the rubber cap closing the drainage opening on the back of the appliance is properly positioned.

To empty the container, switch the air conditioner off and unplug the cord. Remove the cap from the rear drainage opening and place its end over a normal drain. Ensure that the tube is not twisted or bent. The tube must slope downwards. Re-close the drainage opening with the cap, insert it into the clamp and resume use of the air conditioner.

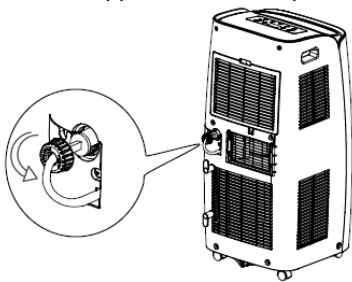


Dehumidification

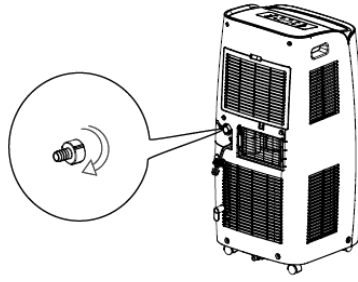
WARNING!

When using the air conditioner in *dehumidification* mode, always dispose **continuous drainage**, in order to maximise dehumidification efficiency.

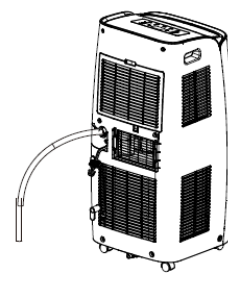
Use the drainage outlet on the appliance. The water can be drained into a drain by simply connecting a tube with 14 mm internal diameter (not supplied).



1. Remove the cap by turning it anti-clockwise then remove the plug.

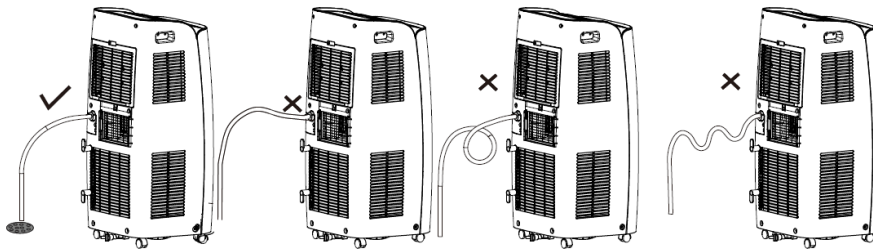


2. Screw the connection tube provided turning it clockwise.



3. Next, insert the drainage tube into the connection tube.

4. Avoid bends in the drainage tube.



WARNING!

When using the air conditioner in heating, if the humidity in the room is high, it may be appropriate to arrange the continuous drainage of the condensate by connecting the tube to the lower hole, to ensure continuity of operation.

The supplied tube can be used for continuous drainage from both the intermediate hole and the lower hole.

REMOTE CONTROL OPERATION

Insert the batteries into the remote control, while respecting the indicated polarities.

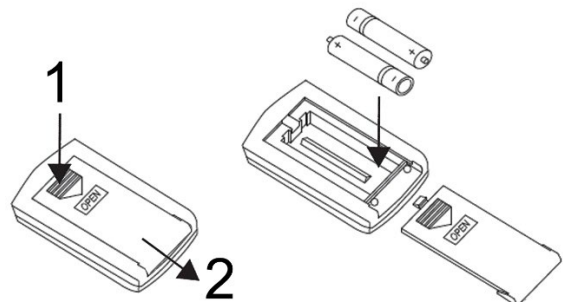
Only use type AAA 1.5V batteries.

Remove the batteries if the remote control is not used for a month or longer.

Do not attempt to recharge the batteries.

Replace all batteries at the same time.

Do not throw the batteries into fire: they may explode.



INFORMATION FOR CORRECT DISPOSAL OF THE BATTERIES PURSUANT TO EUROPEAN DIRECTIVE 2006/66/EC and modifications by Directive 2013/56/EU

Replace the batteries when depleted. At the end of their working life, batteries must be disposed of separately from unsorted waste. They must be delivered to appropriate separated waste disposal plants or to dealers that provide a similar service. Separate waste disposal of batteries prevents potential negative effects on the environment and human health resulting from inadequate disposal, and also allows the materials from which it is made to be recovered and recycled in order to achieve significant savings in terms of energy and resources. The separate disposal obligation is underlined by the crossed-out dustbin symbol appearing on the battery. Illegal disposal of the product by the user is subject to administrative penalties as per current regulation.

FOR OPTIMUM OPERATION OF THE REMOTE CONTROL, ADDRESS THE TRANSMITTER HEAD TOWARDS THE RECEIVER LOCATED ON THE AIR CONDITIONER.

To operate the remote control, press the ON / OFF button on the handset. The icon on the remote control display will flash once and you will hear a sound signal indicating that the signal has been sent to the air conditioner. In off mode, the set temperature and set timer will be displayed on the remote control.

REMOTE CONTROL



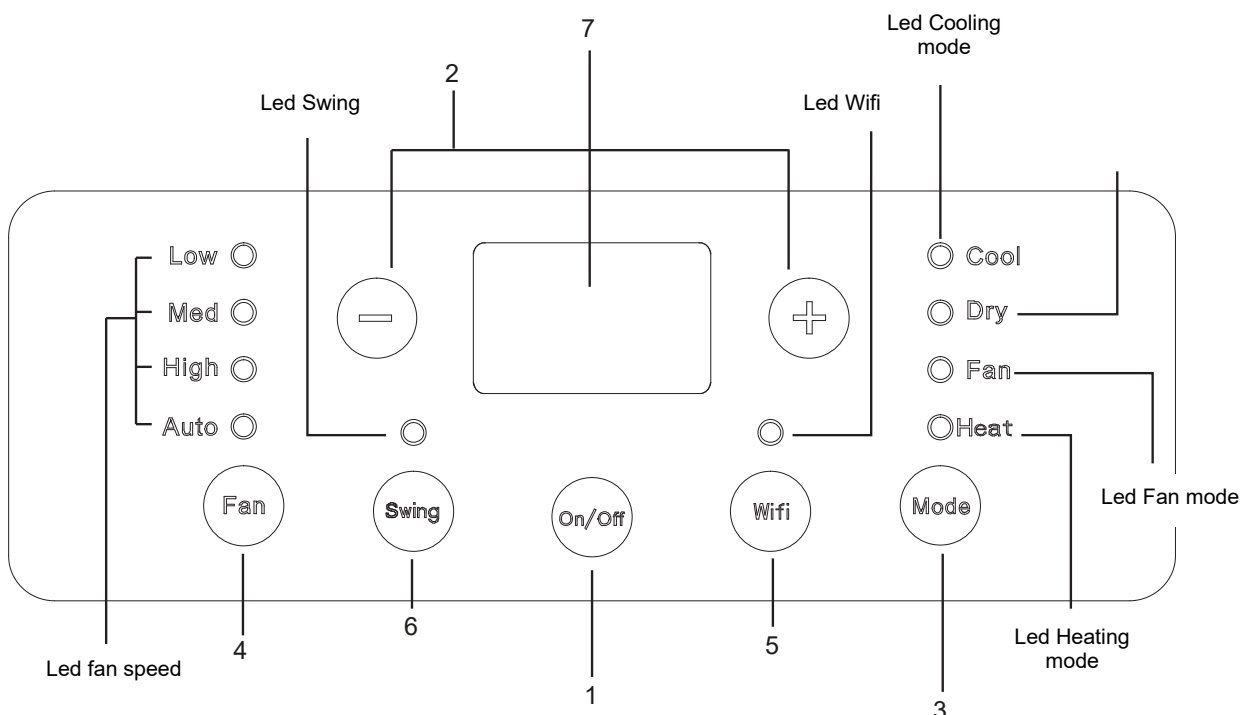
1. ON/OFF BUTTON
2. TEMPERATURE AND TIMER BUTTON
3. MODE BUTTON
4. SWING BUTTON
5. TEMPERATURE AND TIMER BUTTON
6. FAN SPEED BUTTON
7. TIMER OFF BUTTON
8. CLOCK BUTTON
9. TIMER ON BUTTON
10. SLEEP BUTTON
11. TEMPERATURE SETTING BUTTON
12. BUTTON NOT ACTIVE
13. X-FAN AND LIGHT BUTTON
14. WIFI BUTTON
15. BUTTON NOT ACTIVE

DISPLAY OF REMOTE CONTROL



1. I Feel function
2. Auto Mode
3. Cool mode
4. Dry mode
5. Fan mode
6. Heat mode
7. TIMER ON/OFF function
8. Sleep mode
9. Light
10. Fan speed setting
11. Signal transmission
12. Turbo mode
13. 8°C heating function
14. Temp. display
15. Clock
16. TIMER ON/OFF Display
17. Parental lock
18. Up/down swing
19. X-Fan function
20. HEALTH function
21. AIR function
22. Set temp.
23. Outdoor ambient temp.
24. Indoor ambient temp.

CONTROL PANEL



(1) ON/OFF BUTTON (on control panel and on remote control)

Press this button to switch the unit on or off.

When switched on, the appliance will start functioning based on its last settings (Memory function).

(2) TEMPERATURE + / - AND TIMER ADJUSTMENT BUTTONS (on control panel and on remote control)

The temperature can be adjusted to between 16 °C and 30 °C.

Increase temperature (+):

- 1) Allows for adjusting the desired temperature in cooling (COOL) mode.
- 2) Whenever the (+) button is pressed, the set temperature increases by 1 °C.

Decrease temperature (-):

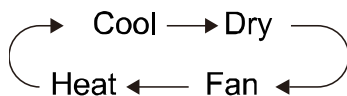
- 1) Allows for adjusting the desired temperature in cooling (COOL) mode.
- 2) Whenever the (-) button is pressed, the set temperature decreases by 1 °C.

In DRY mode it's not possible to adjust the temperature.

On remote control the buttons to adjust the temperature are ▼ and ▲

(3) MODE SELECTION BUTTON (on control panel and on remote control)

On control panel, touch this button to select the various operating modes, according to the following sequence:



In the COOL and HEAT mode the display lights up and the corresponding LEDs light up. In the DRY and FAN modes the display does not light up, only corresponding LEDs light up.

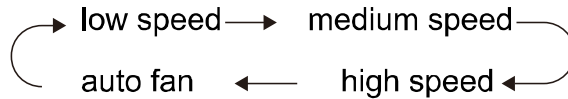
On remote control press this button to select the different operating modes, according to the following sequence:



The AUTO mode and the set temperature are not displayed on the remote control display, the unit will automatically select the operating mode according to the temperature detected in the environment.

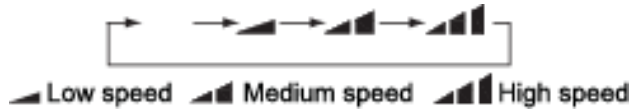
(4) FAN SPEED ADJUSTMENT BUTTON (on control panel and on remote control)

On control panel, touch this button when the appliance is switched on for adjusting the ventilation accordingly the following sequence:



On remote control, press this button to adjust the fan speed in the following sequence:


Auto (automatic ventilation) -> Low speed (low ventilation speed) -> Medium speed (medium ventilation speed) -> High speed (high ventilation speed) -> Auto



Fan speed cannot be adjusted in DRY mode and is fixed at low.

When Auto fan speed is selected, the unit automatically adjusts the fan speed according to the factory settings.

In Dry mode the fan speed is fixed at low speed.

X-FAN function: Press and hold the fan speed button (FAN) for 2 seconds in COOL (cooling) or DRY (dehumidification) mode, the icon  appears and the fan continues to run for a few minutes to dry the inside of the unit, even if the power has been turned off. When the unit is turned on, the X-FAN mode is not active. This function is not available in AUTO, FAN and HEAT modes.

This function is used to dry the condensation that forms inside the appliance after it has been turned off, thus avoiding the formation of mold.

After setting the X-FAN function, turn off the device with the ON / OFF button, the internal fan continues to operate for a few minutes at low ventilation speed, if you want to stop the fan, keep the SPEED button pressed for 2 seconds.

(5) WIFI BUTTON (on control panel and on remote control)

On control panel touch this button to turn on/off the WiFi function. When the WiFi is on the LED is lighted on.

To reset WiFi settings hold this button for 10 seconds.

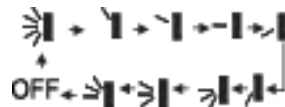
On the remote control, press the Wifi button to activate or deactivate the Wifi function, the corresponding icon on the display will appear.


When the unit is off, press and hold the MODE and Wifi buttons simultaneously for 1 second to reset the Wifi to the factory settings.

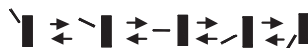
(6) SWING BUTTON (on control panel and on remote control)

On control panel touch this button to swing the flap automatically up & down, and when you have selected the desired angle, press again to lock them in the desired angle.

On remote control press this button to swing the flap up & down, accordingly the following sequence:



When the SWING button is selected, the symbol  appears on the remote control display and the flap swings in the following sequence:



(7) TEMPERATURE AND ERROR DISPLAY ON CONTROL PANEL

With the exception of message H8, tank full, when an error occurs do not try to repair the air conditioner, always take it to an Argoclima Service Center, otherwise the guarantee will no longer be valid.




Problem	Cause	Solution
H8	Tank full of water.	Empty the tank. If the problem persists, contact a service centre.
F1	Room temperature sensor failure.	Contact a service centre.
F2	Failure of temperature sensor on the evaporator.	Contact a service centre.

F0	Refrigerant leakage. Air conditioner out of order.	Contact a service centre.
H3	Overload protection device on compressor.	The room temperature exceeds the appliance's operating range (beyond 35°) or there is too much humidity. Wait for the temperature to drop below 35 °C. Check if the evaporator and compressor are obstructed by objects. If they are, remove the objects, disconnect the unit then restore the power supply. Clear the obstructed ventilation grilles. If the problem persists, contact a service centre.
E8	Overload protection.	
F4	The external temperature sensor has short-circuited.	Contact the service centre.

The temperature and error display lights up only in the COOL mode. In the DRY and FAN modes the display does not light up.

FUNCTIONS THAT CAN BE ACTIVATED ONLY BY THE REMOTE CONTROL

CLOCK BUTTON / SETTING THE TIME AND TIMER

Press the clock button on the remote control, the icon  flashes. Within 5 seconds, press ▼ or ▲ to set the time. By holding down one of the two buttons for about 2 seconds, you can increase or decrease the set time by 1 minute every 0.5 seconds and then by 10 minutes every 0.5 seconds. After selecting the desired time, press the button  again to confirm the time, the icon  will remain lit on the remote control display.

1. Setting the current time: Press CLOCK button; the clock symbol flashes and use the arrows to set the current time.
2. Programming the air conditioner on: press the TIMER ON button; the time will be displayed with ON flashing; use the arrow keys to select the desired switch-on time.
3. Programming for shutdown: press TIMER OFF button; the time will be displayed with the OFF indication flashing; use the arrow keys to select the desired switch-off time.

SLEEP BUTTON

Press this button on remote control to activate the Sleep function, which automatically adapts the temperature to changes in body and room temperature throughout the night, so as to optimise comfort when sleeping and minimise consumption. This function it's available only cooling and heating mode.

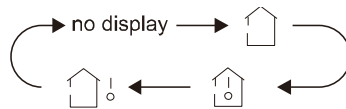
There is no variation in the ventilation speed.




In cooling mode, after the first hour the set temperature increases by 1 ° C, after the second hour it increases again by 1 ° C; after the 5th hour it decreases by 1C °, continues in this way for another 3 hours now and then exits the Sleep function, continuing to operate normally in cooling mode. The reverse happens in heating mode.

If the Sleep function is set, the indicator light comes on.

TEMP BUTTON (temperature)

Press this button on the remote control to display the set temperature and the room temperature. The temperature display follows the sequence:






When you select  or "no display" the set temperature is displayed on the unit. When selecting  the unit, the ambient temperature is displayed; within 3 seconds it receives another signal from the remote control and the display returns to showing the set temperature. The external temperature detection function is not available (symbol ). When the unit is turned on, the set temperature is shown by default.

TURBO BUTTON

Press this button on remote control to activate or deactivate the Turbo function, which allows the unit to reach the set temperature in a short time. In COOL mode the unit will emit a powerful jet of cold air at maximum speed. In HEAT mode the unit will emit a powerful jet of air at maximum speed.

X-FAN BUTTON / LIGHT

X-FAN function: Press this button on the remote control, in COOL or DRY mode, the icon  appears and the fan continues to run for a few minutes to dry the inside of the unit, even if the appliance is been turned off. When the unit is turned on, the X-FAN mode is not active. This function is not available in AUTO, FAN (ventilation) and HEAT (heating) modes.

Light function : press this button to activate or deactivate the control panel display light, if on, the icon  appears on the display of remote controller if off it does not appear.

IFEEL FUNCTION

Press the "▲" and "MODE" buttons simultaneously on remote control to start the I FEEL function and the corresponding icon will be displayed on the remote control. After setting this function, the remote control will send the room temperature detected to the unit, which automatically adjusts the internal temperature based on the detected temperature. Press these two buttons again simultaneously to deactivate the I FEEL function and the icon will disappear. When this function is active, place the remote control close to the user, in any case in the room where the air conditioner is located, so that the latter can receive the signal sent by the remote control.

SAFETY FUNCTIONS CAN ONLY BE ACTIVATED FROM THE REMOTE CONTROL

REMOTE CONTROL LOCK

Simultaneously press "+" and "-" to lock the remote control. The "Lock" icon will light up on the remote control, and the latter will not respond to commands.

SWITCHING BETWEEN °C AND °F.

Press the "-" and "MODE" buttons simultaneously to switch between °C and °F.

LIGHT FUNCTION

Press the "+" and "FAN" buttons simultaneously for 3 seconds to set the activation/ deactivation of the lamp.

WIFI GUIDE

How to set and operate the air conditioner with Wifi

1. Make sure that the device (smartphone or Tablet) used is equipped with a standard version of Android (version 4.4 or higher) and iOS (iOS7.0 or higher) as the operating system. For more details refer to the App.
2. Units can be connected and controlled only via Wi-Fi network or via Hotspot function.
3. Routers with WEP encryption are not supported.
4. The application interface is universal for all products and many features may not match for all units. It may vary depending on the operating system used or the update in use. Refer to the current version.
5. If the access protection on your Router is active in the "MAC Filter" / "MAC address filter" item, enable the access to the network of the MAC address of the device.

Installation and use instruction

1. Frame the QR Code using a *QR Code Reader*



or search for the "EWPE SMART" application in the app store



download and install the application.



Install the App by referring to its guide. Once the installation is complete, the icon appears on the smartphone's home page.

NB:

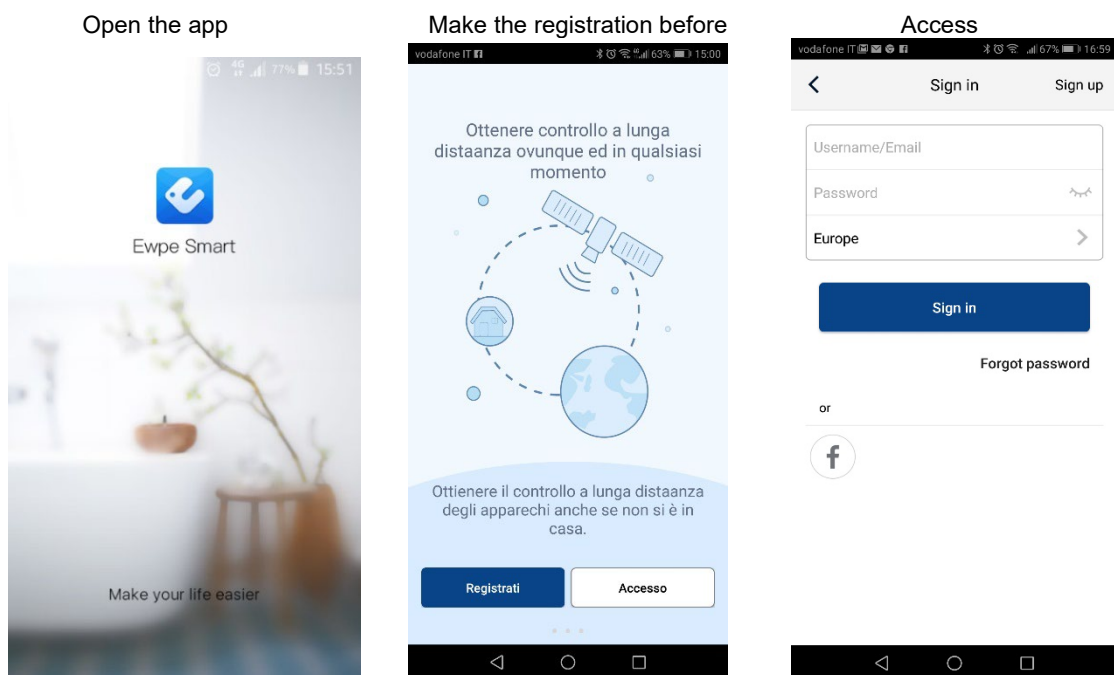
Before starting any procedure, disconnect the power supply from the product, allow a few minutes to pass and reconnect it.

2. Registration and access.

After installing the application, open "EWPE SMART" and click Sign up to register.

PLEASE NOTE:

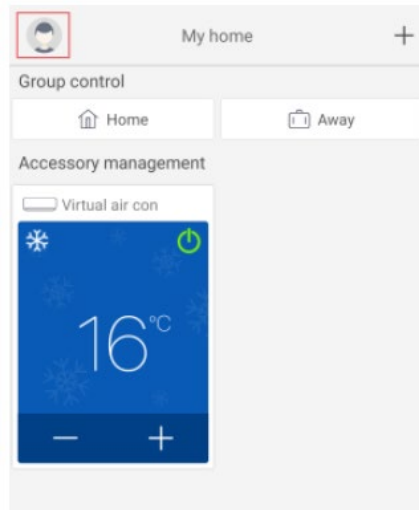
- **USERNAME:** must be UNIQUE, composed of name + number, without spaces (eg **Rossi57**)
- **Personal email:** if already registered, retrieve Username / Password. It is not possible to create another account with the same mail.
- **PASSWORD:** must have at least one capital letter, symbols or special characters (- ;, etc.) and numbers.
- Repeat **PASSWORD** written above
- **EUROPE** country



3. Adding units

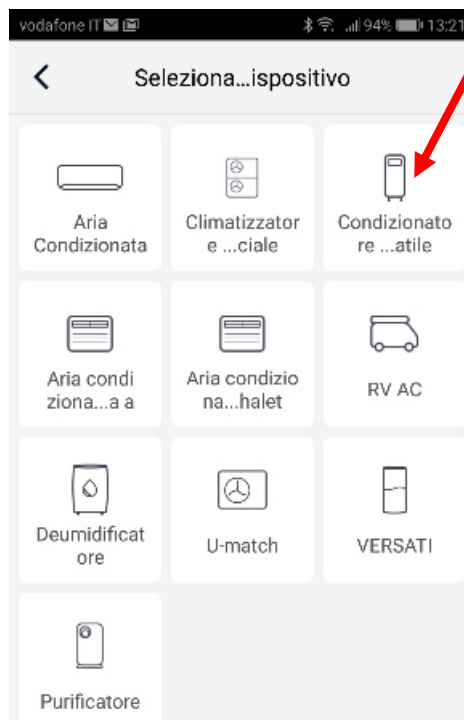
Clicking on the icon of the little man opens a menu that includes, among other things, the "Help" function.

Follow the instructions that appear on your device to add the unit or add a new unit, press + in the upper right corner of the homepage.



A menu appears with all the categories of devices that can be connected.

Select the relevant type: in case of a **portable air conditioner**: the third box on right



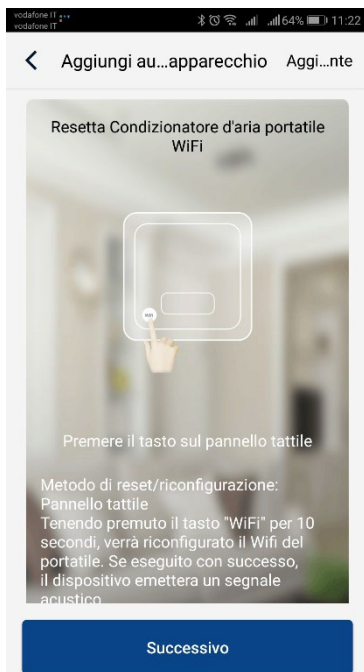
After choosing the category of interest, proceed with the reset of the unit.

Different unit reset systems can be chosen depending on the type of unit / system and remote control (with or without wifi key).

Follow step by step the operative instructions depending on the selected reset system.



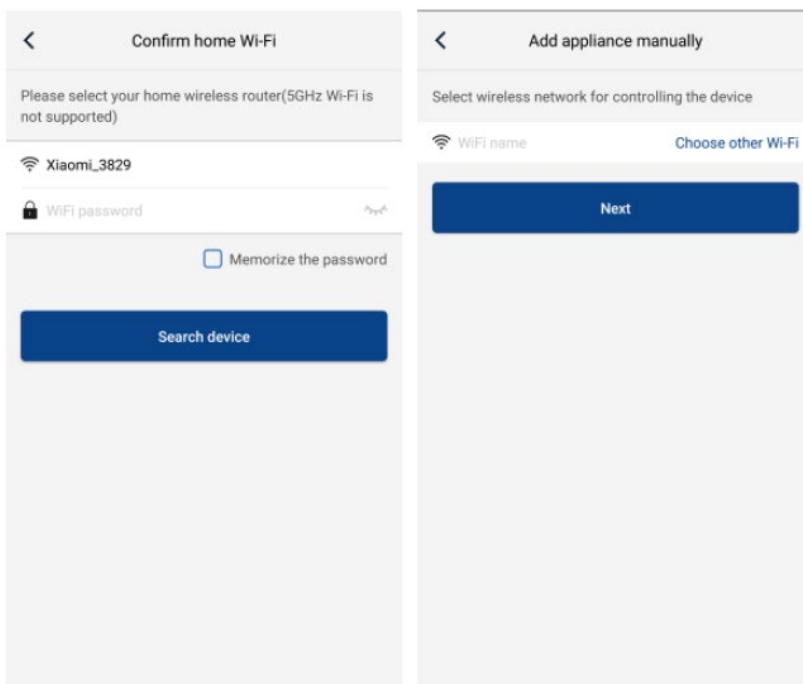
After performing the reset following the instructions, click on Next to automatically add the unit (it's necessary to enter Wi-Fi password).



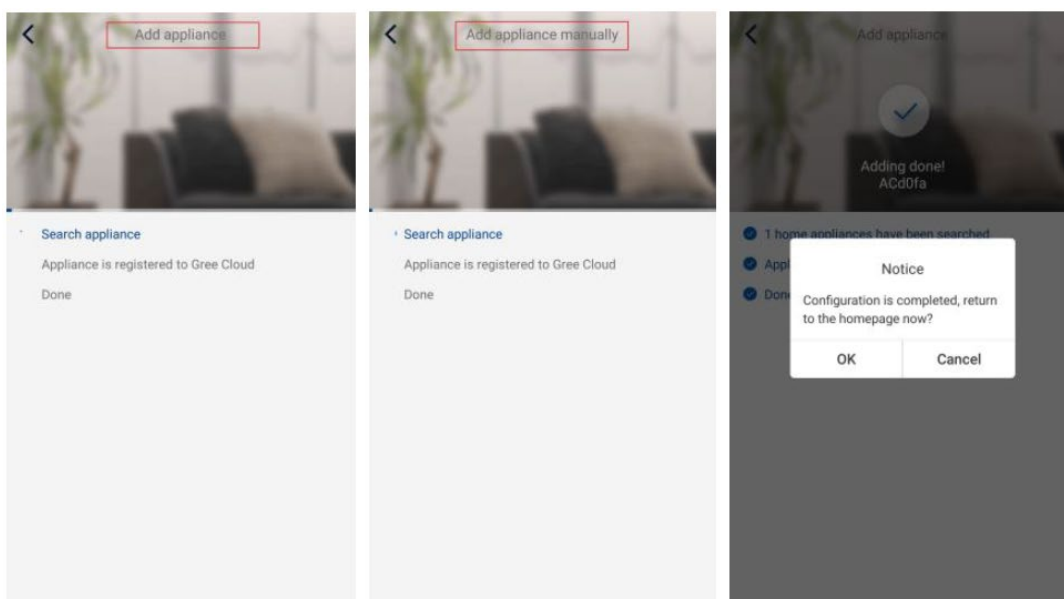
<p>WIRE CONTROL OR PORTABLE AIR CONDITIONER (CONTROL PANEL RESET) Press the button on the touch panel. With the unit off, press and hold the "Wifi" button for 10 seconds. When the unit beeps, it means the reset has been successful. NB: The configuration must be done within 2 minutes. If it does not happen within 2 minutes, repeat the reset operation.</p>	<p>REMOTE CONTROL WITH WIFI BUTTON Direct the remote control towards the unit. With the remote control off, press the "Mode" + "Wifi" buttons simultaneously for 1 second. When the unit beeps, it means that the reset has been successful. NB: The configuration must be done within 2 minutes. If it does not happen within 2 minutes, repeat the reset operation..</p>	<p>REMOTE CONTROL WITHOUT WIFI BUTTON (MODE andTURBO) Direct the remote control towards the unit. Press the "Mode" + "Turbo" buttons simultaneously for 10 seconds. After the unit has twice produced an acoustic signal, this will mean that the reset has been successful. NB: The configuration must be done within 2 minutes. If it does not happen within 2 minutes, repeat the reset operation</p>
---	---	---

Alternatively, after setting and resetting the air conditioner, click on *Add appliance manually* in the upper right corner to select the Wi-Fi network to associate.

Select the desired network and continue the configuration.



After performing the electrical reset of the unit and entering the information, perform a search for the unit (Search appliance) and continue the configuration.

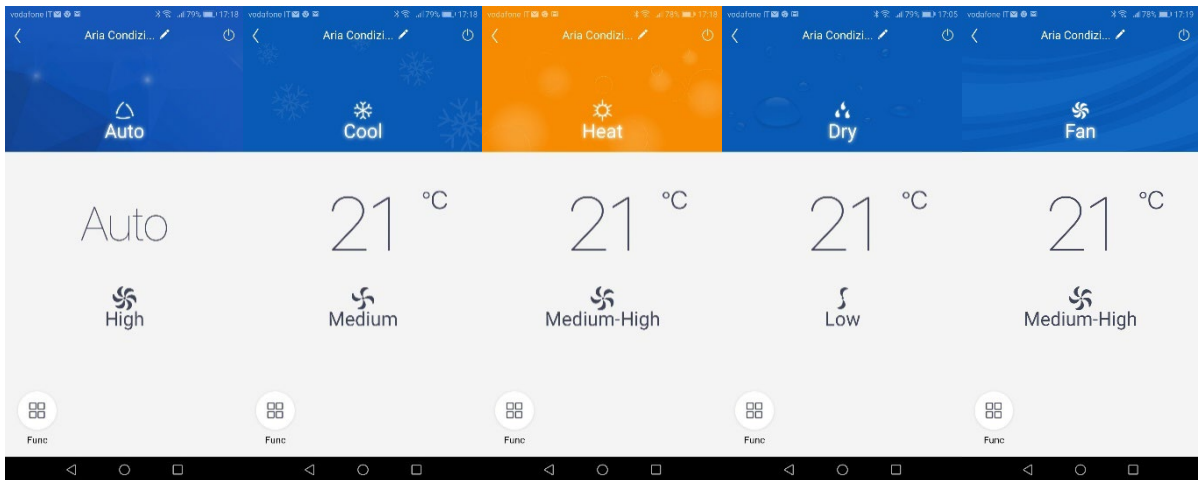


Configuration of the main functions

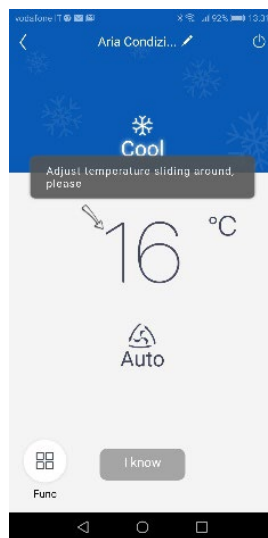
In the Homepage click on the device you wish to control and access the operating interface of it.

1. Select, operating mode, temperature and fan speed.

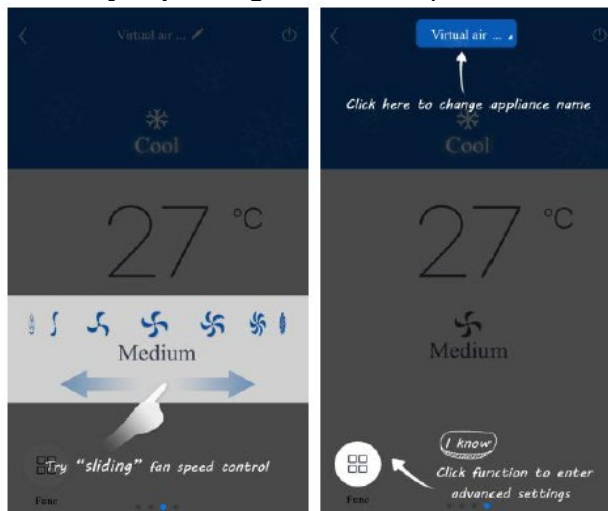
- Mode



2. Temperature for each mode: just slide your finger on the indicated temperature

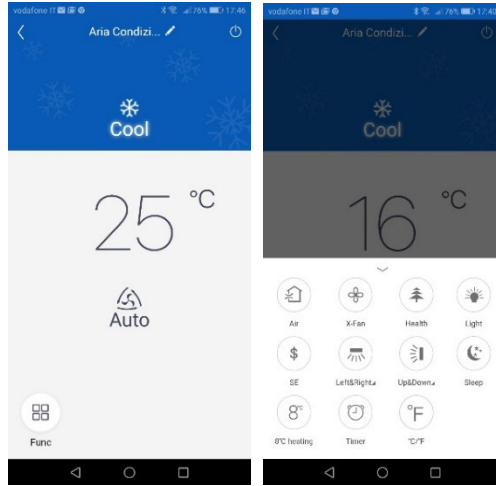


3. Ventilation speed for each mode: just slide your finger on the fan symbol (the adjustment possibilities vary depending on the mode)

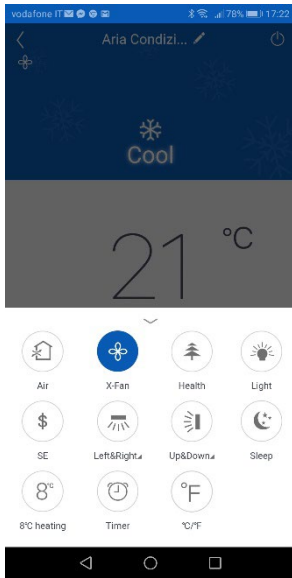


4. Set advanced functions

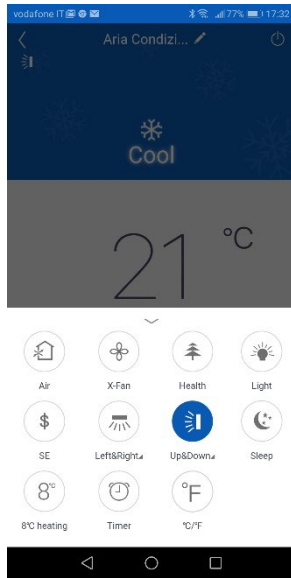
Click Function (Func) in the lower left corner of the interface to enter the advanced settings



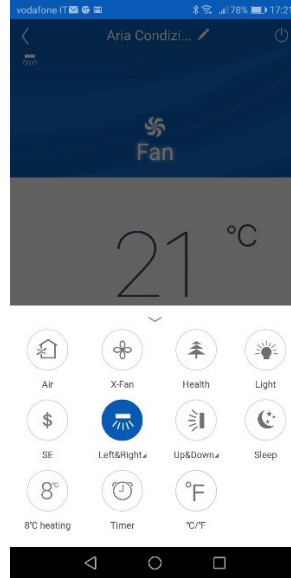
X-FAN function



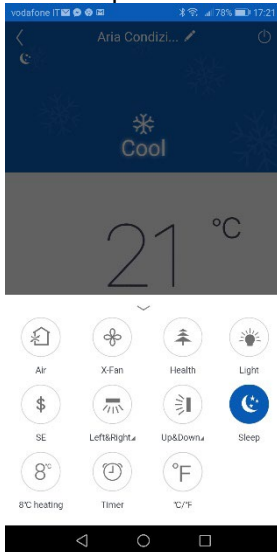
Vertical flap swinging



Horizontal flap swinging
(if available)



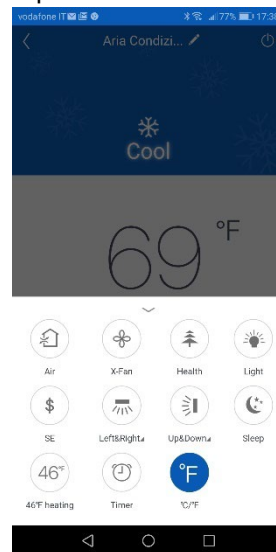
Sleep function



Light on indoor unit display



Temperature unit conversion

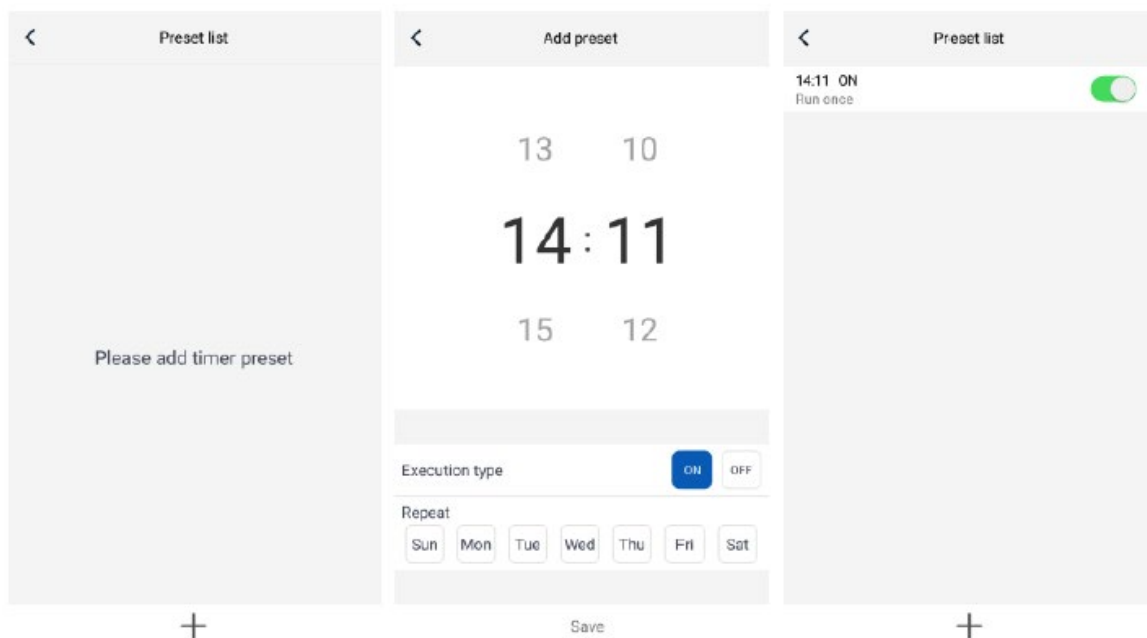


Swing setting

Click Up & down swing to turn the swing function on or off. Click the arrow in the lower right corner of the icon to go to the next screen and set the swing level.


List of Preselections

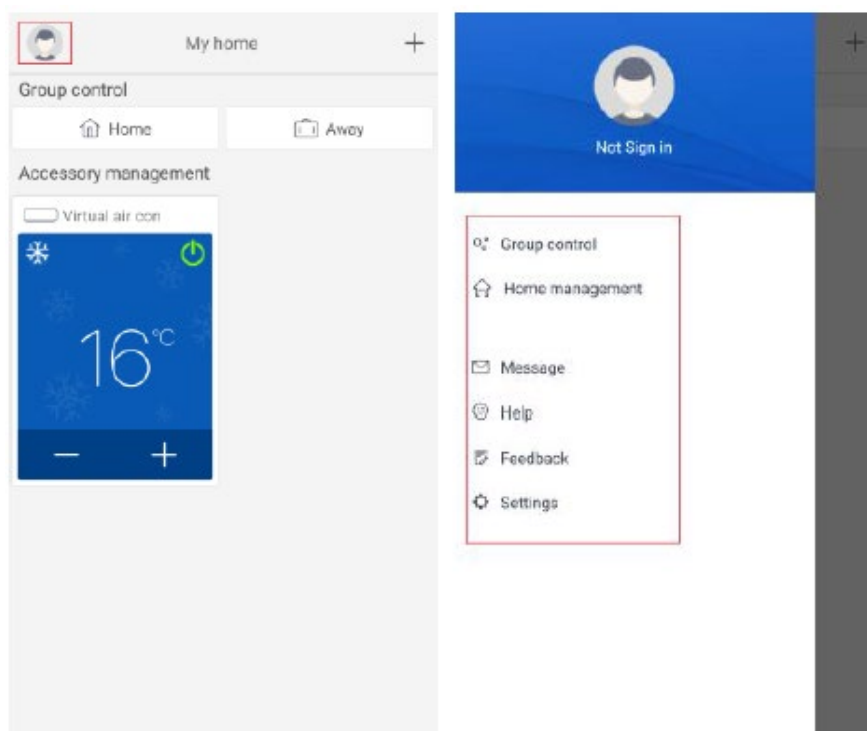
Click Timer. Then click + and make adjustments.



Other functions

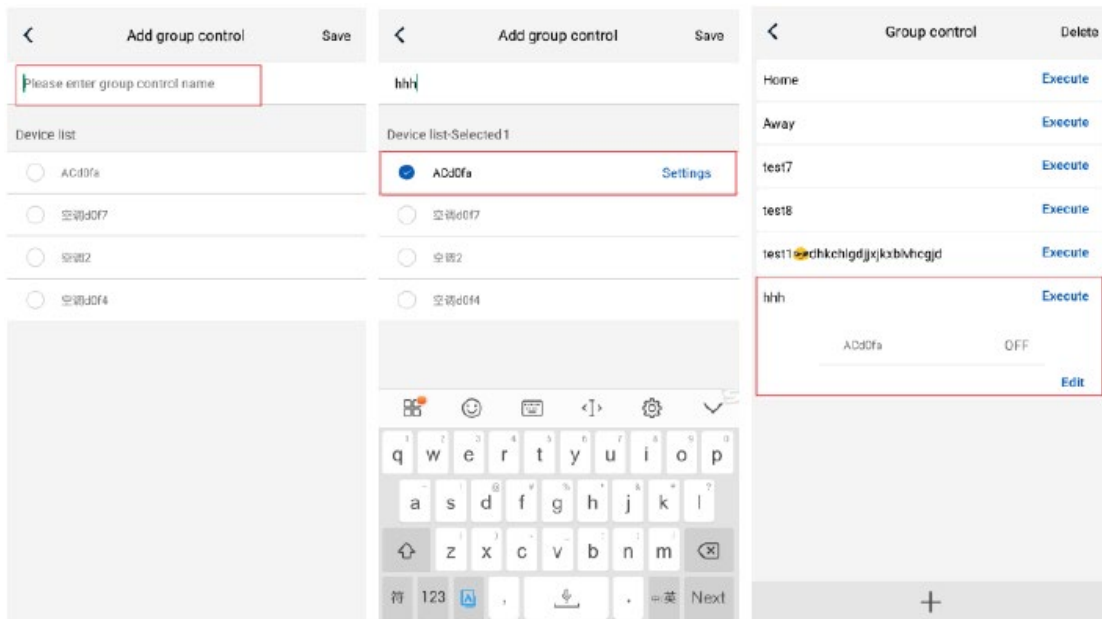
1. Homepage menu

Click on the profile picture  in the upper left corner of the homepage and set each menu function.



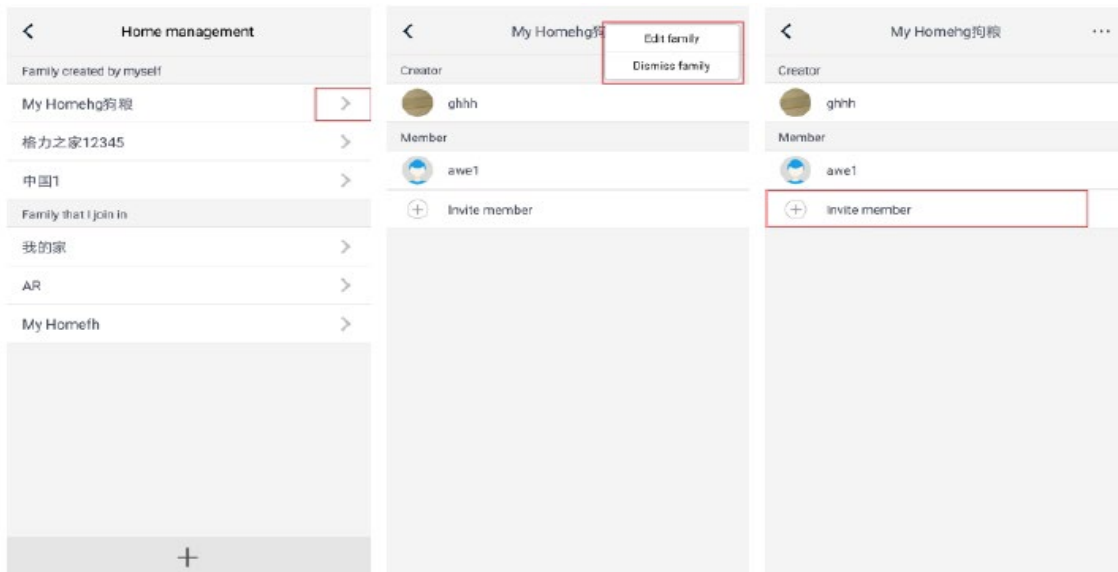
2. Group Control

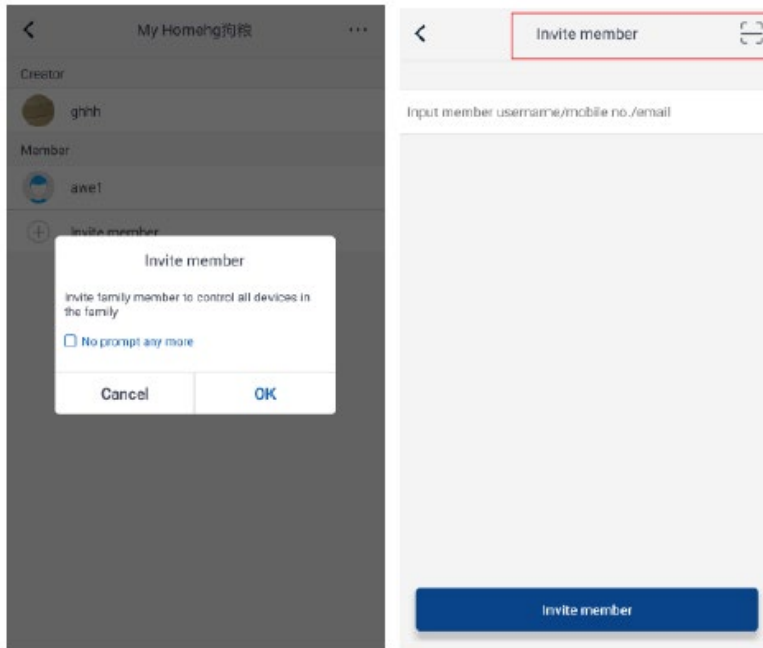
Click Group Control to use the present devices (Ex. Change the group name to "hhh" and set up the devices in the group list). When this group is working you can change the settings of the whole group.



3. Home Management

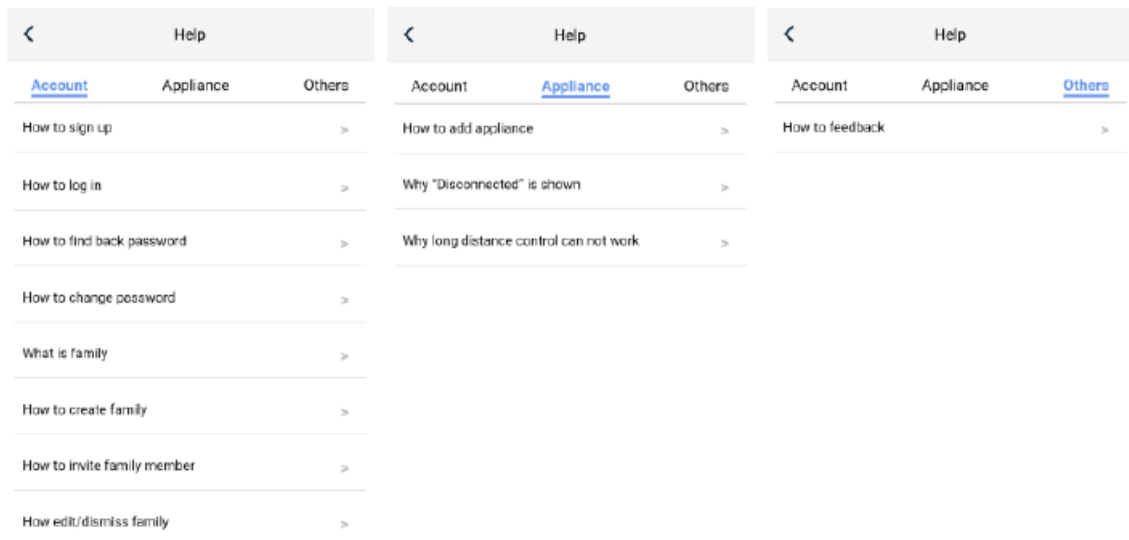
Click Home Management to create or manage a "family system". You can add new members to the family system of the registered account.





4. Help

Press Help to view the instructions for **EWPE SMART APP**.



5. Feedback

Click Feedback to send a feedback on the product.

6. How to reset the air conditioner WiFi module:

Turn off the unit with the remote control and disconnect the air conditioner power for at least 10 seconds. Reconnect the power supply. After 1 minute, press the "WiFi" and "Mode" buttons simultaneously. If the air conditioner beeps, it means that the WiFi module has been reset correctly.

Attention: The configuration is carried out within 2 minutes. If it does not happen within 2 minutes, repeat the reset operation.

Analysis of common network setting errors:

If the short distance control does not work, perform the checks specified below:

- Make sure the air conditioner power is connected.
- Make sure that the air conditioner's WiFi function is normally active.
- Make sure your phone's WiFi selects the corresponding air conditioner.
- Reset with the remote control and restart the setting from step 3.

It is important to remember what is listed below.

1. The WiFi function of the air conditioner takes about 1 minute to start.
2. The air conditioner is equipped with memory function.

Guide to operation with Google Home

Ewpe Smart App Operation Manual

Operating Systems

Requirement for User's smart



Link for downloading the App



iOS system
Support iOS7.0 and
above version



Android system
Support Android 4.4 and
above version

Download and installation

Scan the QR code or search "Ewpe Smart" in the application market to download and install it. When "Ewpe Smart" App is installed, register the account and add the device to achieve long-distance control and LAN control of smart home appliances. For more information, please refer to "Help" in App.

Google Home instructions

1. Premise

Before using Google Home to control intelligent equipment, please make sure you have satisfied the following conditions.

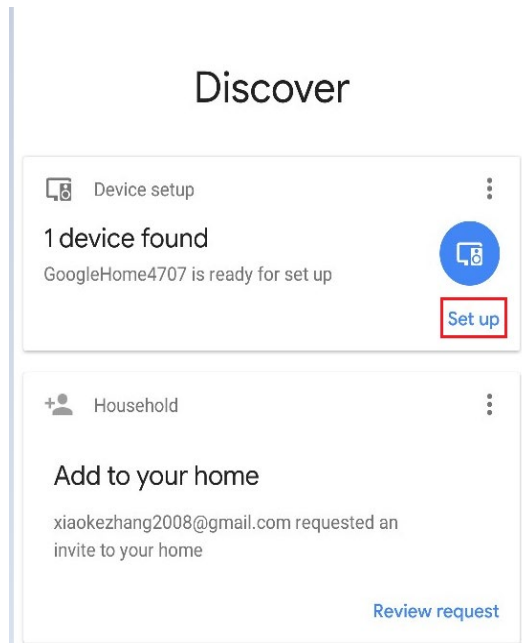
- Your mobile phone has installed the latest version of Google Home app or Google app (for Android only)
- Your mobile phone has installed the latest version of EWPE app.

2. Complete device networking configuration according to the guidance of EWPE App

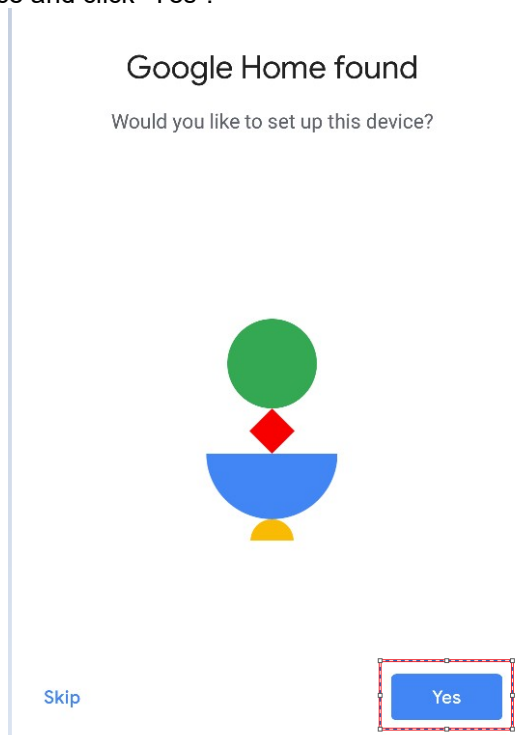
Note: Revise the device name in the App to the one which is easy for Google Assistant to recognize, it is English name generally, e.g: "Proklima Air conditioning".

3. Google Home configuration

- If you have configured Google Home, you can skip this step, the following statement is mainly for the Android client.
- Please make sure your Google Home device is energized and connected to Wi-Fi network, the four lights on the cover is on.
- Open Google Home App on the phone, after successful login, “Discover” will appear automatically to wait for the Google device to be connected.
- Click “Setup” to start connecting Google Home device.



Confirm to add Google Home device and click “Yes”.



It will give out a sound to confirm that you have connected to the right device. After hearing the sound, click “Yes” to enter the next step.

Did you hear the sound?

This lets you know you're connected to the right
Google Home



[Retry](#)

[Yes](#)

Join in Help Improve Google Home and click “Yes, I’m in” or “No thanks”.

Help improve Google Home

Automatically share device stats and crash reports
with Google to improve everyone's experience.

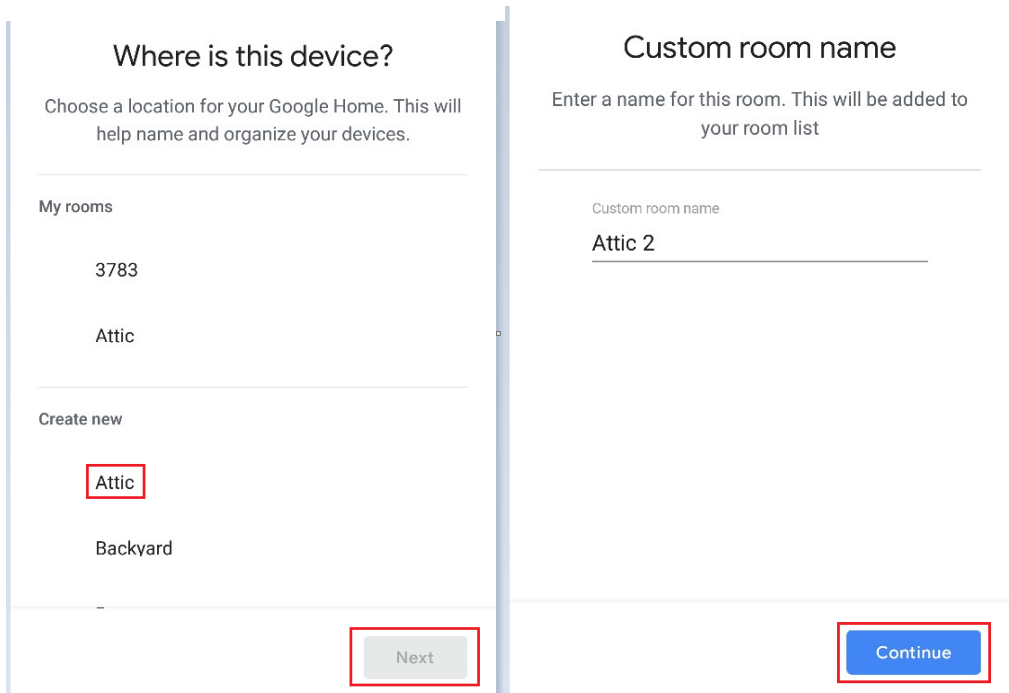
[Learn more](#)



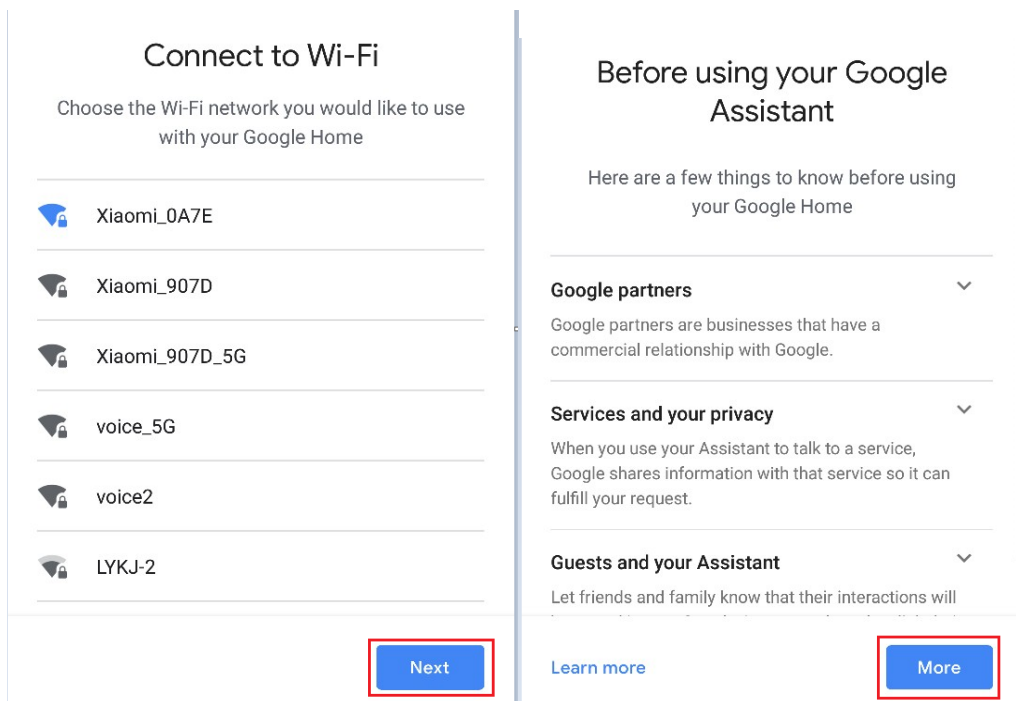
[No thanks](#)

[Yes, I'm in](#)

Distinguish the room of Google Home from the other Google device areas, click “NEXT”, revise room name and click “Continue”.



Then select Wi-Fi network and click “NEXT” to wait for device network connection.



Set Google Home and click “More”.

Get personal results with your voice

Voice Match has been set up

Now you can turn on personal results to use your voice to access your calendar, contacts, reminders and more on this device.

You can turn off personal results in Assistant settings.

[Learn more](#)



NO THANKS

I AGREE

Click "I AGREE".

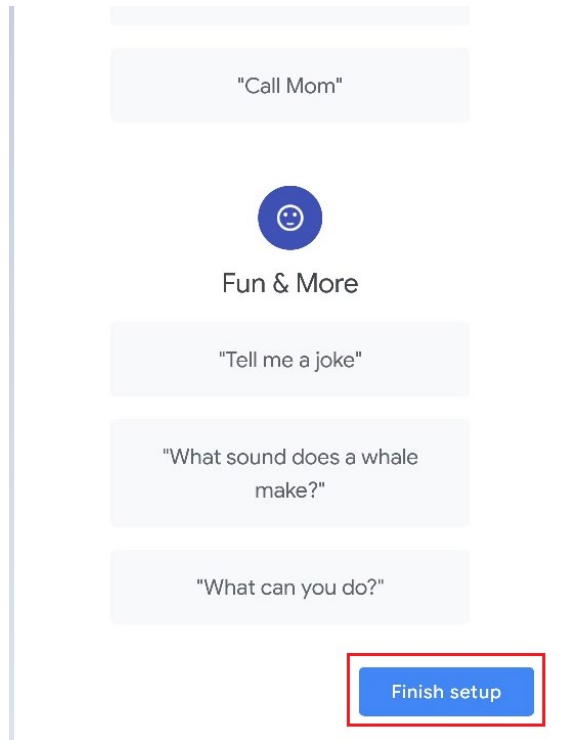
Attic 2 speaker is ready

Now let's explore what you can do



Continue

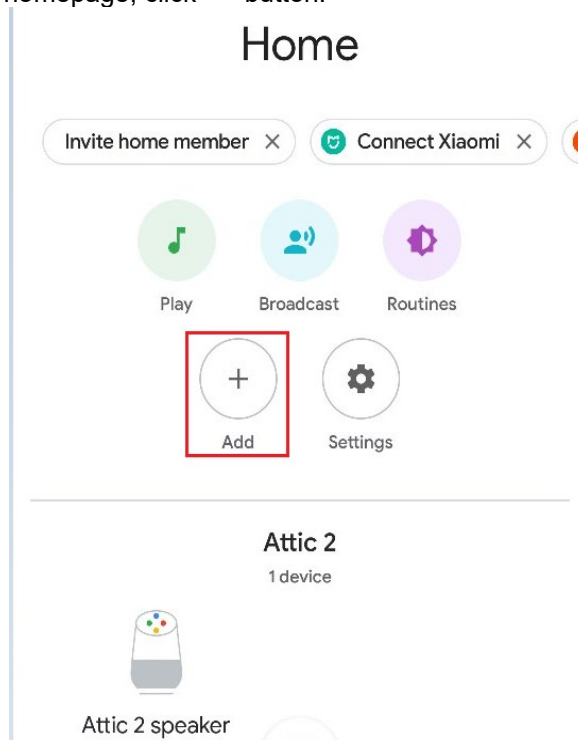
According to the prompting, choose if you agree the corresponding operation, if it displays "Google Home is ready", choose "Continue" to the next step.



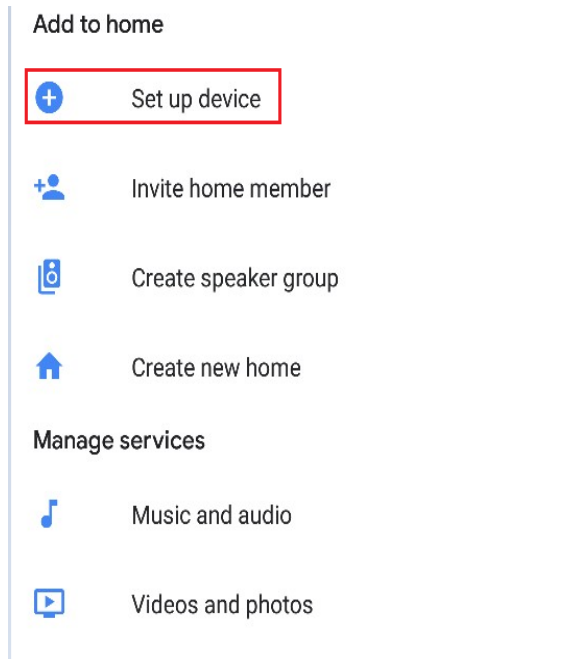
Here comes the language control guidance course, after listening, click “Finish setup”, then Google Home setting is completed.

4. Add EWPE app account

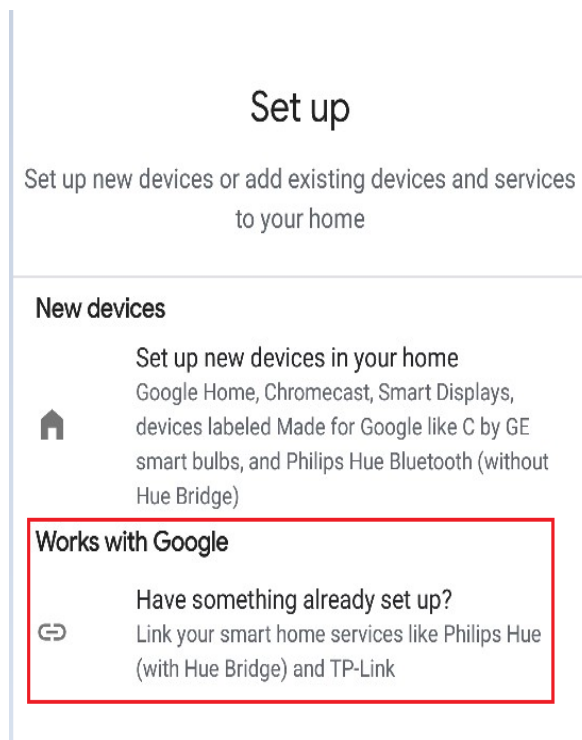
- ◆ In Google Home App homepage, click “+” button.



Click “Set up device”.

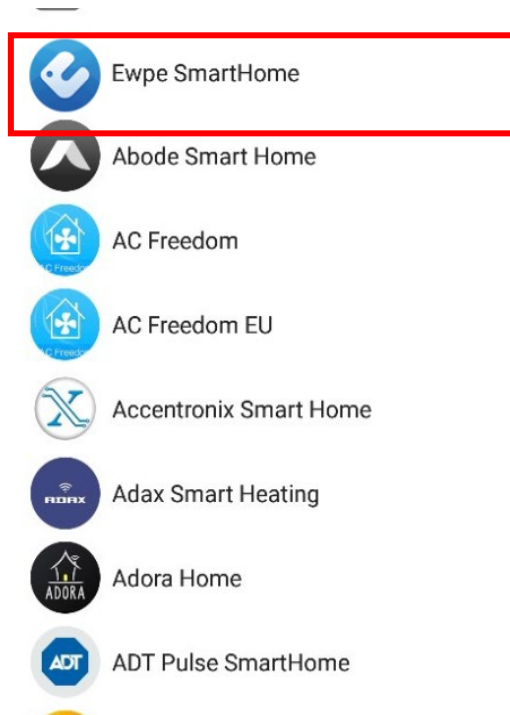


Select Works with Google.

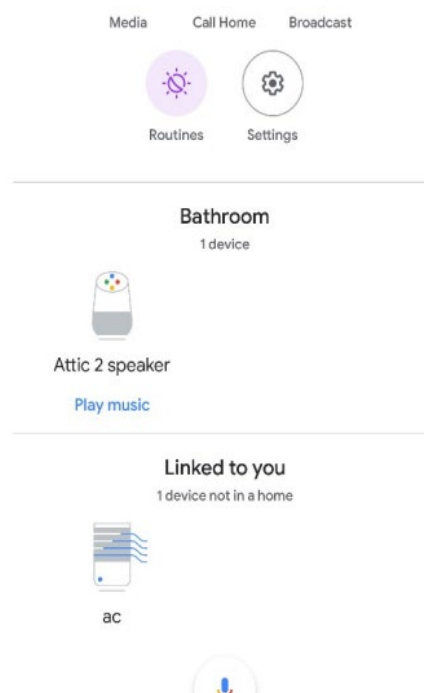


Search "Ewpe SmartHome".

Search Ewpe SmartHome on the list and click it, choose the country where your Ewpe Smart App account is, input EWPE App account and password and click "Ewpe SmartHome" to add it.



After adding, your device will appear on the device list.



5. Use Google Home to control your intelligent device

Now, you can use Google Home to control your intelligent device. Take Air Conditioning as an example, the supporting instruction includes: Ok Google, turn on/off Air Conditioning.

AIR SPEED

Ok Google, set the air conditioning to high speed.

Mode

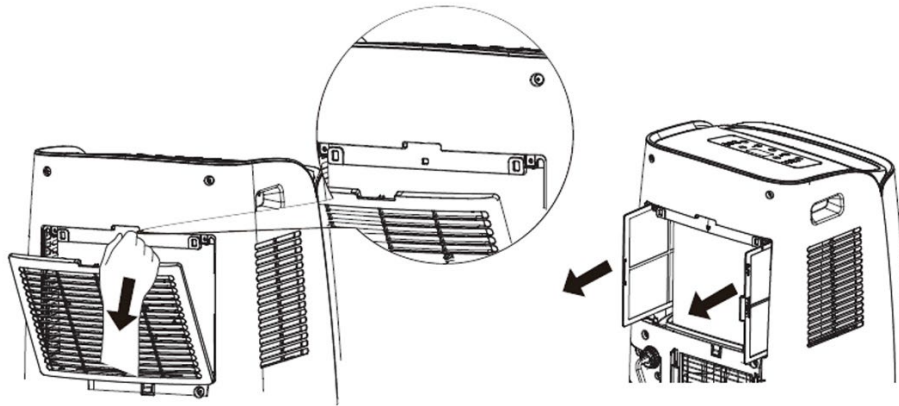
Ok Google, set the AC mode to cool.

Temperature

Ok Google, set the temperature at 16°C.

WARNING!

Prior to carrying out any cleaning or maintenance, unplug the unit from the power socket.

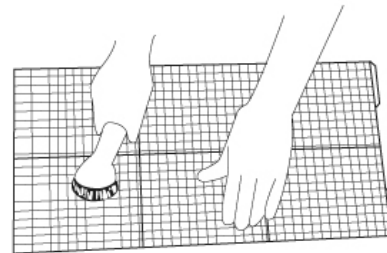


1. Cleaning the air filters

The air filter must be checked at least once every two weeks of operation. Operating with dirty or clogged filters will decrease the effectiveness of the air conditioner and can cause serious problems.

To remove the filter, release the rear grille then slide out the filter by gently pulling it sideways.

Use a vacuum cleaner to remove any dust. Should this not be sufficient, wash the filter with lukewarm water and neutral detergent (if necessary), rinse it with cold water then leave it to dry naturally before putting it back in place. After putting the filter back in place, close the grille and resume use of the air conditioner.



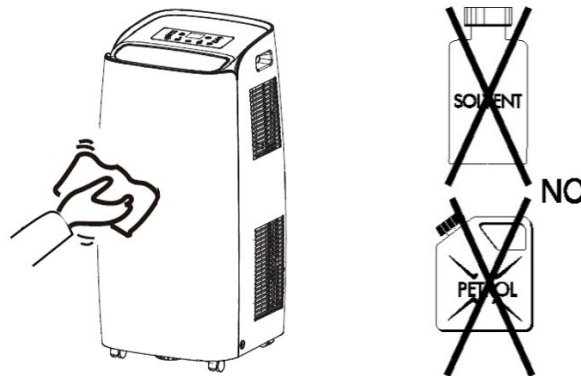
2. Cleaning the casing.

Use a soft damp cloth to clean the outer surface of the air conditioner.

Do not use excessively hot water, solvents, petrol or other aggressive chemical compounds, talcum powder and brushes: they may damage the surface or colour of the casing.

Remove any stains using warm water with a little neutral detergent.

Do not pour water onto the air conditioner to clean it: this may damage the internal components or cause a short circuit.



3. Storage.

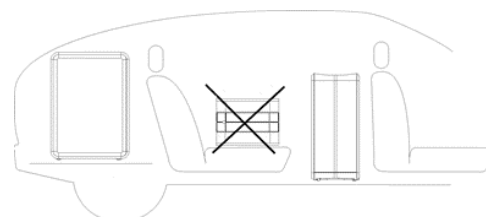
When you do not envisage using the air conditioner for a long time, clean the filters before storing it away.

Keep the appliance in a vertical position at all times. Do not place any heavy objects on the top and, if possible, protect the air conditioner with a plastic sheet.

4. Transport.

Preferably keep the air conditioner in the vertical position when transporting it.

Should this not be possible, rest it on its right-hand side; when it reaches its destination, immediately put the appliance in the vertical position and wait at least 4 hours before using it in the cooling mode.



5. For complete safety, regularly check the condition of the power cord; should it be damaged through use, contact the Service Centre to replace it.

TIPS FOR MAXIMISING COMFORT AND MINIMISING CONSUMPTION

CHECK that:

- the unit's extraction and delivery grilles are always unobstructed;
- the air filters are always clean: a dirty filter will decrease the passage of air and thus reduce the unit performance;
- the doors and windows are closed, to avoid infiltration of unconditioned air;
- the flexible hose is correctly positioned, without folds or sharp bends;
- the room temperature is above 18 °C for the cooling mode, and above 10 °C for dehumidification mode.

REGULATION (EU) No. 517/2014 – F-GAS

The unit contains R290, a natural greenhouse gas with global warming potential (GWP) = 3 - Kg. 0,29 = 0,00087 Tons CO₂ equiv.

Do not release R290 into the atmosphere.



INFORMATION FOR THE CORRECT DISPOSAL OF THE PRODUCT IN ACCORDANCE WITH EUROPEAN DIRECTIVE 2012/19/EU

This appliance may not be scrapped with domestic waste at the end of its life cycle. We call your attention to the crucial role played by the consumer in the re-use, recycling and other forms of recovery of such waste.

The appliance must be scrapped by a sorted waste disposal centre or by returning it to the retailer (no charge is levied for this service), when you purchase a new equivalent appliance.

Sorted disposal of electric and electronic equipment prevents the negative effects on the environment and human health resulting from improper scrapping, and also allows the materials from which it is made to be recovered and recycled, with significant savings in terms of energy and resources.

The sorted disposal requirement is indicated by the crossed waste bin label affixed to the appliance.

Specialist's Manual

Aptitude requirement for maintenance man (repairs. should be done only be specialists).

a) Any person who is involved with working on or breaking into a refrigerant circuit should hold a current valid certificate from an industry-accredited assessment authority, which authorises their competence to handle refrigerants safely in accordance with an industry recognised assessment specification.

b) Servicing shall only be performed as recommended by the equipment manufacturer. Maintenance and repair requiring the assistance of other skilled personnel shall be carried out under the supervision of the person competent in the use of flammable refrigerants.

Safety preparation work

The maximum refrigerant charge amount is shown on the following table a

(Note: Please refer to the nameplate for the charging quantity of R290)

Room area (m ²)	4	11	15
Maximum charge (kg)	<0.152	0.225	0.304

table a - Maximum charge (kg)

Prior to beginning work on systems containing flammable refrigerants, safety checks are necessary to ensure that the risk of ignition is minimised. For repair to the refrigerating system, the following precautions shall be complied with prior to conducting work on the system.

- Work procedure

Work shall be undertaken under a controlled procedure so as to minimise the risk of a flammable gas or vapour being present while the work is being performed.

- General work area

All maintenance staff and others working in the local area shall be instructed on the nature of work being carried out. Work in confined spaces shall be avoided. The area around the workspace shall be sectioned off. Ensure that the conditions within the area have been made safe by control of flammable material.

- Checking for presence of refrigerant

The area shall be checked with an appropriate refrigerant detector prior to and during work, to ensure the technician is aware of potentially toxic or flammable atmospheres. Ensure that the leak detection equipment being used is suitable for use with all applicable refrigerants, i.e. non-sparking, adequately sealed or intrinsically safe.

- Presence of fire extinguisher

If any hot work is to be conducted on the refrigeration equipment or any associated parts, appropriate fire extinguishing equipment shall be available to hand. Have a dry powder or CO₂ fire extinguisher adjacent to the charging area.

- No ignition sources

No person carrying out work in relation to a refrigeration system which involves exposing any pipe work shall use any sources of ignition in such a manner that it may lead to the risk of fire or explosion. All possible ignition sources, including cigarette smoking, should be kept sufficiently far away from the site of installation, repairing, removing and disposal, during which refrigerant can possibly be released to the surrounding space. Prior to work taking place, the area around the equipment is to be surveyed to make sure that there are no flammable hazards or ignition risks. "No Smoking" signs shall be displayed.

- Ventilated area

Ensure that the area is in the open or that it is adequately ventilated before breaking into the system or conducting any hot work. A degree of ventilation shall continue during the period that the work is carried out. The ventilation should safely disperse any released refrigerant and preferably expel it externally into the atmosphere.

- Checks to the refrigeration equipment

Where electrical components are being changed, they shall be fit for the purpose and to the correct specification. At all times the manufacturer's maintenance and service guidelines shall be followed. If in doubt, consult the manufacturer's technical department for assistance.

The following checks shall be applied to installations using flammable refrigerants:

---The actual refrigerant charge is in accordance with the room size within which the refrigerant containing parts are installed;

---The ventilation machinery and outlets are operating adequately and are not obstructed;

---If an indirect refrigerating circuit is being used, the secondary circuit shall be checked for the presence of refrigerant;

---Marking to the equipment continues to be visible and legible. Markings and signs that are illegible shall be corrected;

---Refrigeration pipe or components are installed in a position where they are unlikely to be exposed to any substance which may corrode refrigerant containing components, unless the components are constructed of materials which are inherently resistant to being corroded or are suitably protected against being so corroded.

- Checks to electrical devices

Repair and maintenance to electrical components shall include initial safety checks and component inspection procedures. If a fault exists that could compromise safety, then no electrical supply shall be connected to the circuit until it is satisfactorily dealt with. If the fault cannot be corrected immediately but it is necessary to continue operation, an adequate temporary solution shall be used. This shall be reported to the owner of the equipment so all parties are advised.

Initial safety checks shall include:

---That capacitors are discharged: this shall be done in a safe manner to avoid possibility of sparking;

---That no live electrical components and wiring are exposed while charging, recovering or purging the system;

---That there is continuity of earth bonding.

- Repairs to sealed components

During repairs to sealed components, all electrical supplies shall be disconnected from the equipment being worked upon prior to any removal of sealed covers, etc. If it is absolutely necessary to have an electrical supply to equipment during servicing, then a permanently operating form of leak detection shall be located at the most critical point to warn of a potentially hazardous situation.

Particular attention shall be paid to the following to ensure that by working on electrical components, the casing is not altered in such a way that the level of protection is affected. This shall include damage to cables, excessive number of connections, terminals not made to original specification, damage to seals, incorrect fitting of glands, etc.

- Ensure that the apparatus is mounted securely.
- Ensure that seals or sealing materials have not degraded to the point that they no longer serve the purpose of preventing the ingress of flammable atmospheres. Replacement parts shall be in accordance with the manufacturer's specifications.

NOTE: The use of silicon sealant can inhibit the effectiveness of some types of leak detection equipment. Intrinsically safe components do not have to be isolated prior to working on them.

Repair to intrinsically safe components

Do not apply any permanent inductive or capacitance loads to the circuit without ensuring that this will not exceed the permissible voltage and current permitted for the equipment in use.

Intrinsically safe components are the only types that can be worked on while live in the presence of a flammable atmosphere. The test apparatus shall bear the correct rating.

Replace components only with parts specified by the manufacturer. Other parts may result in the ignition of refrigerant in the atmosphere from a leak.

Cabling

Check that cabling will not be subject to wear, corrosion, excessive pressure, vibration, sharp edges or any other adverse environmental effects. The check shall also take into account the effects of aging or continual vibration from sources such as compressors or fans.

Detection of flammable refrigerants

Under no circumstances shall potential sources of ignition be used in the searching for or detection of refrigerant leaks. A halide torch (or any other detector using a naked flame) shall not be used.

Leak detection methods

The following leak detection methods are deemed acceptable for all refrigerant systems.

Electronic leak detectors may be used to detect refrigerant leaks but, in the case of flammable refrigerants, the sensitivity may not be adequate, or may need re-calibration.

(Detection equipment shall be calibrated in a refrigerant-free area.) Ensure that the detector is not a potential source of ignition and is suitable for the refrigerant used.

Leak detection equipment shall be set at a percentage of the LFL of the refrigerant and shall be calibrated to the refrigerant employed, and the appropriate percentage of gas (25 % maximum) is confirmed.

Leak detection fluids are suitable for use with most refrigerants but the use of detergents containing chlorine shall be avoided as the chlorine may react with the refrigerant and corrode the copper pipe-work. If a leak is suspected, all naked flames shall be removed/extinguished.

If a leakage of refrigerant is found which requires brazing, all of the refrigerant shall be recovered from the system, or isolated (by means of shut off valves) in a part of the system remote from the leak. For appliances containing flammable refrigerants, oxygen free nitrogen (OFN) shall then be purged through the system both before and during the brazing process.

Removal and evacuation

When breaking into the refrigerant circuit to make repairs or for any other purpose conventional procedures shall be used. However, for flammable refrigerants it is important that best practice is followed since flammability is a consideration. The following procedure shall be adhered to:

- remove refrigerant;
- purge the circuit with inert gas; evacuate;
- purge again with inert gas;
- open the circuit by cutting or brazing.

The refrigerant charge shall be recovered into the correct recovery cylinders.

For appliances containing flammable refrigerants, the system shall be flushed with OFN to render the unit safe. This process may need to be repeated several times. Compressed air or oxygen shall not be used for purging refrigerant systems.

For appliances containing flammable refrigerants, flushing shall be achieved by breaking the vacuum in the system with OFN and continuing to fill until the working pressure is achieved, then venting to atmosphere, and finally pulling down to a vacuum. This process shall be repeated until no refrigerant is within the system. When the final OFN charge is used, the system shall be vented down to atmospheric pressure to enable work to take place. This operation is absolutely vital if brazing operations on the pipe-work are to take place.

Ensure that the outlet for the vacuum pump is not close to any ignition sources and that ventilation is available.

Charging procedures

In addition to conventional charging procedures, the following requirements shall be followed.

- Ensure that contamination of different refrigerants does not occur when using charging equipment. Hoses or lines shall be as short as possible to minimise the amount of refrigerant contained in them.
- Cylinders shall be kept upright.
- Ensure that the refrigeration system is earthed prior to charging the system with refrigerant.
- Label the system when charging is complete (if not already).
- Extreme care shall be taken not to overfill the refrigeration system.

Prior to recharging the system, it shall be pressure-tested with the appropriate purging gas.

The system shall be leak-tested on completion of charging but prior to commissioning. A follow up leak test shall be carried out prior to leaving the site.

Decommissioning

Before carrying out this procedure, it is essential that the technician is completely familiar with the equipment and all its detail. It is recommended good practice that all refrigerants are recovered safely. Prior to the task being carried out, an oil and refrigerant sample shall be taken in case analysis is required prior to re-use of reclaimed refrigerant. It is essential that electrical power is available before the task is commenced.

- a. Become familiar with the equipment and its operation.
- b. Isolate system electrically.
- c. Before attempting the procedure, ensure that:
 - mechanical handling equipment is available, if required, for handling refrigerant cylinders;
 - all personal protective equipment is available and being used correctly;
 - the recovery process is supervised at all times by a competent person;
 - recovery equipment and cylinders conform to the appropriate standards.
- d. Pump down refrigerant system, if possible.
- e. If a vacuum is not possible, make a manifold so that refrigerant can be removed from various parts of the system.
- f. Make sure that cylinder is situated on the scales before recovery takes place.
- g. Start the recovery machine and operate in accordance with manufacturer's instructions
- h. Do not overfill cylinders. (No more than 80 % volume liquid charge).
- i. Do not exceed the maximum working pressure of the cylinder, even temporarily.
- j. When the cylinders have been filled correctly and the process completed, make sure that the cylinders and the equipment are removed from site promptly and all isolation valves on the equipment are closed off.
- k. Recovered refrigerant shall not be charged into another refrigeration system unless it has been cleaned and checked.

Labelling

Equipment shall be labelled stating that it has been de-commissioned and emptied of refrigerant. The label shall be dated and signed. For appliances containing flammable refrigerants, ensure that there are labels on the equipment stating the equipment contains flammable refrigerant.

Recovery

When removing refrigerant from a system, either for servicing or decommissioning, it is recommended good practice that all refrigerants are removed safely.

When transferring refrigerant into cylinders, ensure that only appropriate refrigerant recovery cylinders are employed. Ensure that the correct number of cylinders for holding the total system charge are available. All cylinders to be used are designated for the recovered refrigerant and labelled for that refrigerant (i.e. special cylinders for the recovery of refrigerant). Cylinders shall be complete with pressure-relief valve and associated shut-off valves in good working order. Empty recovery cylinders are evacuated and, if possible, cooled before recovery occurs.

The recovery equipment shall be in good working order with a set of instructions concerning the equipment that is at hand and shall be suitable for the recovery of all appropriate refrigerants including, when applicable, flammable refrigerants. In addition, a set of calibrated weighing scales shall be available and in good working order. Hoses shall be complete with leak-free disconnect couplings and in good condition. Before using the recovery machine, check that it is in satisfactory working order, has been properly maintained and that any associated electrical components are sealed to prevent ignition in the event of a refrigerant release. Consult manufacturer if in doubt.

The recovered refrigerant shall be returned to the refrigerant supplier in the correct recovery cylinder, and the relevant waste transfer note arranged. Do not mix refrigerants in recovery units and especially not in cylinders. If compressors or compressor oils are to be removed, ensure that they have been evacuated to an acceptable level to make certain that flammable refrigerant does not remain within the lubricant. The evacuation process shall be carried out prior to returning the compressor to the suppliers. Only electric heating to the compressor body shall be employed to accelerate this process. When oil is drained from a system, it shall be carried out safely.



improve your life

www.argoclima.com